



Federal
Public Service
FINANCE

INFOSESSION E-GLOBALISATION

WWW.FIN.BELGIUM.BE

CUSTOMS AND EXCISES • FEDERAL PUBLIC SERVICE FINANCE

.be

E-GLOBALISATION

- ✓ Testing with Pilot Companies is ongoing
- ✓ Other companies have started their testing activities
- ✓ Based on remarks of the pilot companies :
 - ✓ Bugs have been corrected
 - ✓ Improvements have been added
- ✓ New performance tests have been executed
- ✓ Reports for our customs officers are available

PLANNING E-GLOBALISATION

- ✓ Testing possible on our normal Test-environment
- ✓ Latest version E-globalisation deployed on Prod-environment
- ✓ E-globalisation activated in Prod as soon as 1 company is ready
- ✓ Other Companies :
 - ✓ Asap
 - ✓ Latest go-live : 1/2/2022



SOFTWARE THAT STREAMLINES CUSTOMS AND LOGISTICS



Mission statement.

Stream Software delivers high quality software and services for logistics and customs systems, and focuses on operational and financial efficiency improvement.

Stream Software implements software using a pragmatic approach in order to support our clients' ongoing and long-term business requirements.


To achieve these goals, Stream Software is staffed with highly trained professionals who combine in depth knowledge of logistics and customs.

Our values are:

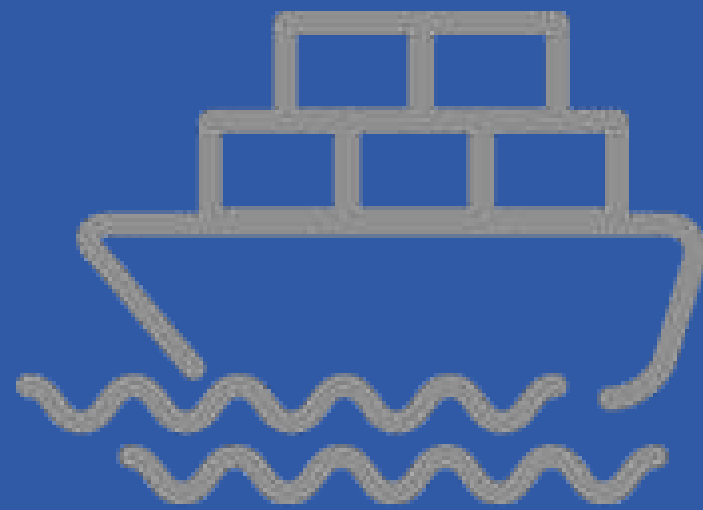
- Quality
 - Efficiency
 - Pragmatism
 - Continuity
 - Standardization
- 

Governance.

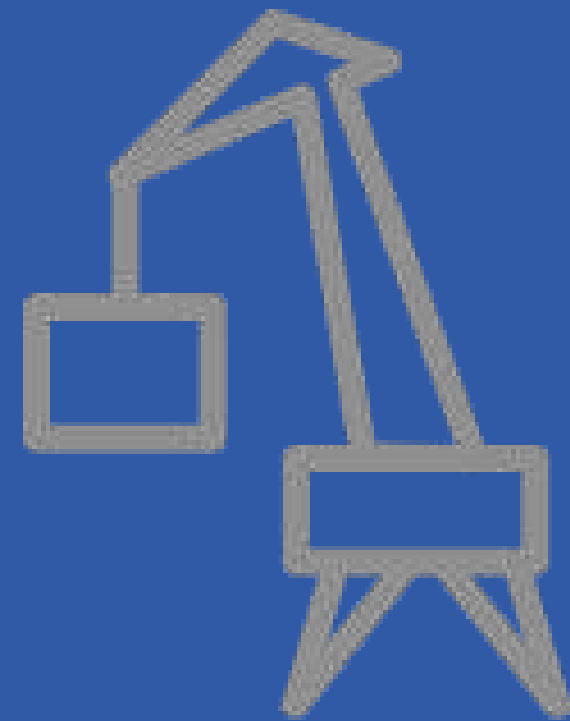
Stability in evolution.

- Family owned company with employees in the board of directors.
 - Public Limited Company with protections against take over.
 - 100 % Belgian company.
 - ISO9001 certified.
 - Strategy for the future:
 - Investment in knowledge : knowledge company.
 - Reinvestments in development and training in support of the companies growth.
- 

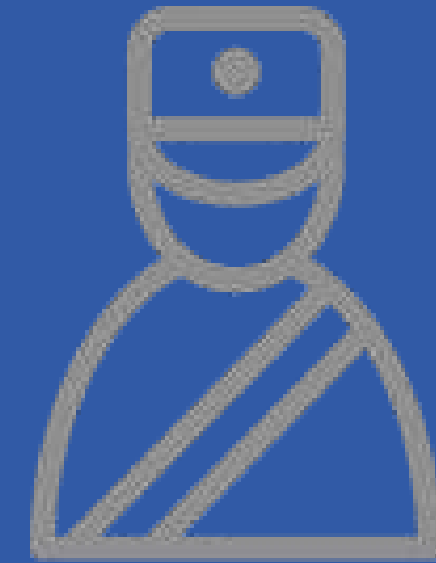
Who do we work for?



**Industrial
companies**



**Logistics service
providers**



**Customs &
excises**

Customs procedures.

Stream Software delivers customs solutions for Belgium, the Netherlands and Luxemburg.

The below procedures are being supported:

- PLDA import export
 - NCTS
 - AGS
 - Globalisation
 - Bonded warehouse
 - Inward / outward processing
 - EMCS
 - ...
- 



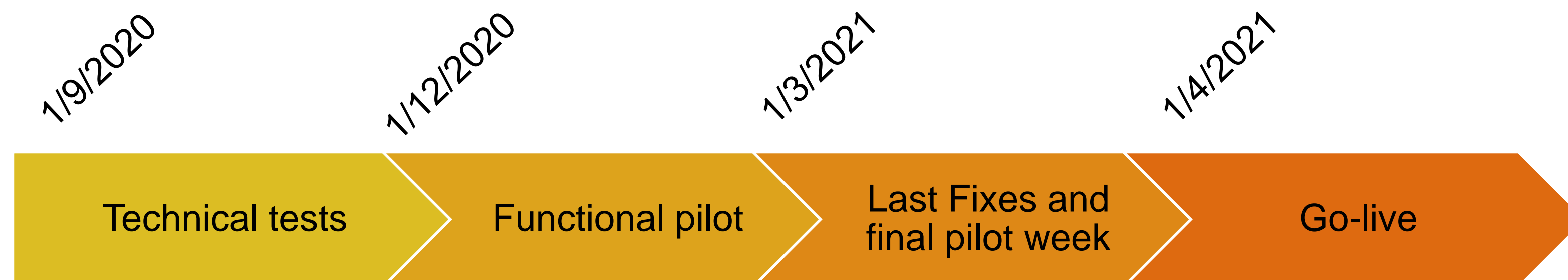
eGlob Pilot : Bleckmann – Fashion & Lifestyle logistics



Overview

- Bonded Warehouse (BW)
Entry with PLDA 71 00
Outbound by globalization procedure 40 71
- Periodicity : weekly per end-customer
- Tests executed by feeding the testenvironment from production system
with all receipts/deliveries in the BW (low-season)
- Transactions from 3 end-customers
2023 shipments (=subsequents)
17924 stock manipulations (inbound write-off)

Timing





eGlob Pilot : Bleckmann – Fashion & Lifestyle logistics



Results

- Start technical testperiod in september -> Mainly **Technical errors** – issues with Interface schemes (XSD)
- Alignment done with customs authorities & communication provider
Necessary changes were done, few issues left to be fixed in March
 - ⚠ if implementing without software partner -> reserve enough time!
- Test system eGLOB is not always available
Take into account when planning tests
 - ⚠ This can happen in production (emergency procedure) – do not wait until end of period , but send regularly
 - E.g. Streamliner application sends on a daily basis, taking into account 1 or more days delay



eGlob Pilot : Bleckmann – Fashion & Lifestyle logistics



Results

- Start functional testperiod in december
- eGlob checks data based on software routines
 - > no margin for errors
 - > difference with past = dump in Excel with manual check
- Consignor information not available for all receipts in BW
 - > additional checks were added on all bonded receipts
 - > Need for historical data correct > big effort yet to be accomplished for remaining stock in BW for older receipts
- Master data in test environment
 - > not always up-to-date -> both in application as well as eGlob
 - This resulted in many errors (e.g. REX met codes U164 & U165)
 - > Good indicator what the consequence of incomplete master data will be
- Additional check added on inbound to allow for smooth outbound via eGlob



eGlob Pilot : Bleckmann – Fashion & Lifestyle logistics



Results

- Good daily administration will be necessary
 - > Streamliner Declarant Assist module checks data against Taric (EU+BE) to prevent unnecessary errors.
 - > no routine can prevent credibility checks
 - e.g. commodity codes taric rules based on weight & value
 - > Previously full checks were impossible by customs authorities.
 - Only sample tests were done with the Excel data.
 - > adapt internal procedures (SOP) to perform adequate follow-up!
- Invalid Commodity codes
 - > valid upon entry, invalid upon outbound
 - > Streamliner Declarant Assist checks and prevent sending needlessly
- Shipments with errors
 - > Follow-up of erroneous shipments (=subsequents) must be done frequently
 - > entry date must be within period
- Dut & VAT calculation – comparison to historical calculation
 - > Streamliner calculates import duties and BTW to compare
 - > 100% match with returned information from authorities!



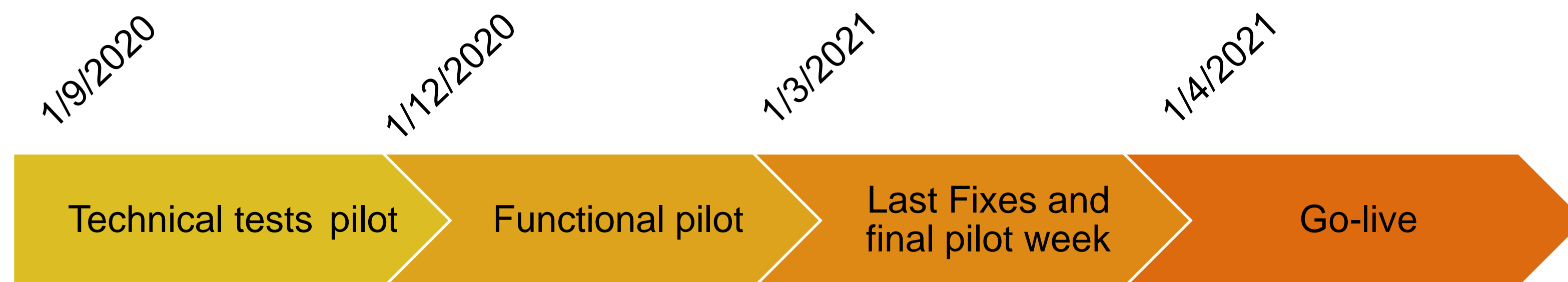
eGlob Pilot : Bleckmann – Fashion & Lifestyle logistics



Conclusion

- Pilot was succesful!
- Multiple periods between Dec/20 and Jan/21 were initialized, administered with subsequents and finalized with an MRN as result
- Few technical issues remain
- Comparison done of 1 period/week with the original globalisation – 100% match apart from explainable differences.

Results were delivered to and analyzed by Kristof De Munter (D.A. Gent)

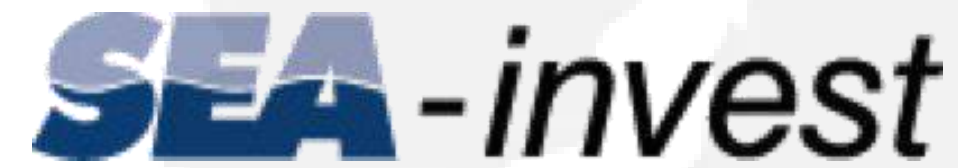


Special thanks to the customs authorities and our friends @ Bleckmann

Questions?

**Our customers
and partners!**





arvato
BERTELSMANN

 **gerlach**


KUEHNE+NAGEL

 **Verhoex**


Gaston Schul


Customs Service

 **RHENUS**
LOGISTICS


HH
HELLY HANSEN


PORTMADE
CUSTOMS

 **Customs Support**


EMBASSY FREIGHT
GLOBAL FREIGHT FORWARDERS


revera
nederland


R&M Forwarding BV
Your 24/7 Fruitforwarder



JACOB MEIJER
LOGISTICS FORWARDING CUSTOMS  SINCE 1845







Contact information:

STREAM SOFTWARE

Potvlietlaan 4

2600 Berchem

Belgium

Tel: 00 32 3 825 77 74

Fax: 00 32 3 830 19 28

E-mail: info@streamsoftware.be

Website : www.streamsoftware.be



Managing International Customs & Trade Compliance



e-Globalisation - Pilot project with Scania

March 3rd, 2021

www.mic-cust.com | Internal use only © 2021, MIC. All rights reserved.



MIC Corporate Overview

Leader in Global Customs & Trade Compliance Management

- Founded: 1988 in Linz – **33 years**
- 400+ employees
- ~ 46 Mio. EUR revenue
- Organic Growth Strategy: ~ +15% per year
- Family-owned and financial independent global software vendor with 1 single IT platform globally

MIC Customs Solutions

- Cover 55+ countries on 6 continents
- Interfaces to established ERP-systems (e.g. SAP, SAP HANA, ORACLE)
legacy & tailor-made systems
- Ready for Software-as-a-Service (SaaS) & optional as On-Premises
- Used by 700+ multinational customers

Cooperation with Local Boutique and Big 4 Consulting Firms

One-Stop-Shop for GTM – Globally



Management Board - MIC Headquarters



Alfred Hiebl, DI
Managing Director



Rainer Roll, Mag.
EVP Global Sales &
Marketing, CCO



Stefan Derntl,
Mag.
EVP Global
Operations, COO

Management of MIC US



Gianluca Romano
Vice President Americas



MIC GTM Solution



Country Coverage





MIC – Development eGlobalization



MIC Development - timeline

- **2016-2018: MIC provides feedback/suggestions on PLDA design (based on similar solution for Germany)**
- **2019: Review of MIG/XSDs + starting tests via SOAP-UI**
- **First half of 2020: implementing basic functionality in MIC**
- **April 2020: decision for pilot project with Scania**
- **July/August 2020: release tests by MIC**
- **Sep 2020 – up to now:**
 - System integration test (done by MIC) and User acceptance tests (Scania supported by MIC)
 - Continuing development based on changes in PLDA specs and feedback from Scania project
- **Jan 2021 – test phase with Scania has been completed successfully**



MIC Development - approach and challenges

- **After short, intensive phase of analyzing interfaces by performing tests against the SIM and ACC environment on PLDA side, the development has been done in an agile way:**
 - Initial mapping of messages based on transactional PLDA declaration
 - General process in MIC based on existing solutions for Germany, Hungary and Slovakia
 - Refinement/correction done based on tests and regular reviews ("discovery sessions")
 - Already in April 2020 first results could have been presented to Scania
- **Adaptions of messages based on adapted XSDs in July/Sep 2020**
 - Number of changes was moderate
 - No rework of general logic was necessary
- **Improvements based on feedback from Scania**
 - In particular, the functionality concerning tracking and following up on errors were improved considering feedback from Scania during the test phase
 - Some features specifically required for the Scania process were added as well
- **Test results by MIC and Scania resulted in improvements on PLDA side**
 - In particular, the error handling was streamlined.





MIC – Pilot project with Scania

Pilot project with Scania - situation at the start

- **Original plan by MIC was to introduce eGlobalization first with one of the existing MIC customers using the old way of globalization.**
- **So far Scania uses transactional import declarations (CPC 7100 and 4071, declaration type Z).**
- **Customs authorities asked Scania to use globalization for 4071 declarations.**
- **After clarification of approach in a few (remote) meetings with Scania, local customs authorities and ICT, we have agreed to do a pilot implementation together with Scania.**
- **Based on the commercial transaction in the Scania's upstream system, the BWH stocks are discharged and the MIC shipment is created and validated without user intervention. Currently also the transactional declaration is created automatically.**
- **Volume in the past: 20.000 – 30.000 items per month**



Pilot project with Scania – Deployment/Testing approach

- **Upgrade of MIC version to first major release including eGlobalisation (July 2020)**
- **Production (master) data has been migrated to QA environment in order to support a test under same conditions as on production**
- **Full system integration, stress tests and functional test done by MIC before start of User Acceptance tests by Scania**
- **Weekly meetings to discuss status of UAT and next steps**
- **Tracking and monitoring of open issues by MIC PM**
- **Customs (Bart Cieters and/or customs officers responsible for Scania) attends weekly meetings if necessary**
- **Additional extensions/bugfixes were provided as service-releases (once or twice per month)**
- **Test sign-off after performing a test with a significant volume of transaction data.**



Pilot project with Scania – System integration tests

	A	B	C	D	F	G	H	I	J
	Subject	Test ID	Test Description	Test Steps	Expected Result	Pass / Fail / Incomplete	Pass Date	Actual Result	Test Data
7									
13	Filtration with eGlobalisation	Filtr-002	Check Stock Removal and Inland Notification	1. Check if data was loaded successfully in Stock removals 2. Check if Inland Notifications were created and closed automatically	Closed Inland Notifications	PASS	02.09.2020	Automatic Flow successful	Stock removal reference: e.g. 2020-09-02/9599643/9599643/2/29580158 Inland Notification: 161209 and 161208
14	Filtration with eGlobalisation	Filtr-003	Create Global Declaration	1. Create and Send Initial Global Declaration for given period 2. Adjust any potential data issues in XML, Inland Notification or Stock Removal 3. Send Subsequent Declaration 4. Adjust any potential data issues in XML, Inland Notification or Stock Removal and Resend 6. Check if Subsequent Declaration successful	Accepted Initial and Subsequent Declarations	PASS	02.09.2020	Successful Creation of Declarations Acceptance of Initial and Subsequent Declarations	09/2020 Glob. Decl: 5560840976009000000247
15	Mass tests	Mass-001	Prepare Data	1. Copy data file from PROD 2. Adjust data in file and copy file multiple times 3. Move files to TEST	Data prepared	PASS	02.09.2020	Data prepared	loaded 105 xml's with each 72 invoice lines SPCO_333597544_20200902T011819023_edit.ed.xml
16	Mass tests	Mass-002	Check Stock Removal and Inland Notification	1. Check if data was loaded successfully in Stock removals 2. Check if Inland Notifications were created and closed	Created Stock Removal(s) Created and Closed Inland Notification(s)	PASS	02.09.2020	114 Stock Removals Created 2 Inland Notifications Created	Inland Notifications: 161211 and 161210
17	Mass tests	Mass-003	Create Global Declaration	1. Create Global Declaration for given period 2. Send Subsequent Declaration	Accepted Subsequent Declarations	PASS	02.09.2020	Subsequent Declaration Accepted	Glob Decl: 5560840976009000000248
18	Configuration tests	CONF-001	Automatic Sending of Inland Notification	1. Copy file from PROD to TEST for September and August 2. Check if stock removal and inland notifications were created 3. Check if Inland Notification was sent automatically	Stock Removals and Inland Notifications (IN) created, IN sent.	PASS	02.09.2020	Stock Removals and Inland Notifications were created and sent. Not marked for Globalisation, Payment Type empty.	e.g. Stock removal: 2020-08-31/9599147/9599147/247/29578320, Part: 2002705 IN: 161190
19	Configuration tests	CONF-002	Automatic Creation of Inland Notification, but no Sending	1. Copy file from PROD to TEST for September and August 2. Check if stock removal and inland notifications were created 3. Check that Inland Notification was not sent automatically	Stock Removals and Inland Notifications (IN) created, IN not sent. IN marked for globalisation, pay type filled with 'A'.	PASS	02.09.2020	Stock Removals and Inland Notifications were created. IN not sent. Marked for Globalisation, Payment Type A.	e.g. Stock removal: 2020-08-31/9599147/9599147/281/29579977, Part: 2002705 IN: 161197
20									



Pilot project with Scania – Challenges

- **Additional/different validation rules**
 - Although Scania has declared document codes before and MIC offers a document code assignment logic, some differences in validation were discovered during testing
 - There were some questions about the meaning and the exact reason of the PLDA errors returned upon sending the subsequent and the final globalization declaration
- **Change from transactional to globalization process**
 - Different way of working for Scania, we had to agree on the exact new procedure. Some specific logic linked to the release of transactional declaration had to be reverted/adapted
 - Only during testing we learned that specific declarations (Antidumping + stock corrections (“Eindafrekening”)) must not be included in the globalization declarations
 - Some uncertainty about data requirements (e.g. for previous documents linked to stocks)
- **Error tracking – missing pointers to items causing the error**
 - This has been solved recently by PLDA for most error situations
 - On MIC side add. features to query on possibly affected items have been provided
- **Infrastructure issues requiring retesting and delaying progress**
 - There were some technical issues at MIC during testing forcing us to restart testing of a whole period several times



Pilot project with Scania – Current status

- **Tests have been completed successfully**
 - Based on production data the globalization declarations for three months were created and finalized
 - Configuration has been completed and “configuration packages” for move to production are available.
- **Go-Live was planned for February 13th**
 - Due to delays in revalidating the licenses required for globalisation, the go-live was postponed
 - The latest version of the software is already installed on production, however the necessary configuration for eGlobalization has not been activated so far.
- **Automatization still to be tested and fine-tuned**
 - Automatic creation and sending of subsequent and correction message will be activated after first month of operations





MIC – eGlobalization solution



MIC solution - overview

- **The same data objects (“shipment data”) are used for both transactional and globalisation declarations – distinction via flag.**
- **The globalization declarations are created by the system after specifying the date range for the source import shipments**
- **Tracking of messages and errors can be done both on shipment/item as well as on “globalization declaration” level.**
- **Navigation between subsequent messages and included items + navigation between error messages and affected items**
- **Correction and Cancellations are supported**
- **Creation of subsequent/correction declarations can be done via background jobs**
- **VAT/Duty payments tracking reports**





MIC solution – Example of “eGlobalisation” screen

Overview Declaration Data Globalisation

Filter Criteria

Period: Customs Procedure:

Declaration Type: Goods Location:

Last Release: Customs Reference:

Refresh:

Sl.	Description	Start Date	End Date	Dec.	M	Declaration Reference	D	CPC	Local Release
24	INITIAL GLOBALISATION DECLARATION - CONTENT ERROR	01/01/2019	01/01/2019	00	000	0400000000	04	100	04000000000000000000
25	INITIAL GLOBALISATION DECLARATION - CONTENT ERROR	01/01/2019	01/01/2019	00	000	0400000000	04	100	04000000000000000000
26	INITIAL GLOBALISATION DECLARATION - CONTENT ERROR	01/01/2019	01/01/2019	00	000	0400000000	04	100	04000000000000000000
27	INITIAL GLOBALISATION DECLARATION - CONTENT ERROR	01/01/2019	01/01/2019	00	000	0400000000	04	100	04000000000000000000
28	LATEST CORRECTIONS - ACCEPTED	04/01/2005	04/06/2005	00	000	0400000000	01	400	04000000000000000000
29	LATEST CORRECTIONS - ACCEPTED	04/01/2005	04/06/2005	00	000	0400000000	04	400	04000000000000000000
30	LATEST SUBSEQUENCES - ACCEPTED	04/01/2005	04/06/2005	00	000	0400000000	04	400	04000000000000000000
31	LATEST SUBSEQUENCES REGISTERED - FINAL RESPONSE	04/01/2005	04/06/2005	00	000	0400000000	01	400	04000000000000000000
32	LATEST SUBSEQUENCES REGISTERED - FINAL RESPONSE	04/01/2005	04/06/2005	00	000	0400000000	04	400	04000000000000000000
33	LATEST SUBSEQUENCES REGISTERED - FINAL RESPONSE	04/01/2005	04/06/2005	00	000	0400000000	04	400	04000000000000000000
34	LATEST SUBSEQUENCES - CONTENT ERROR	01/01/2005	01/01/2005	00	000	0400000000	04	400	04000000000000000000
35	LATEST SUBSEQUENCES - CONTENT ERROR	01/01/2005	01/01/2005	00	000	0400000000	01	400	04000000000000000000
36	LATEST SUBSEQUENCES - TECHNICAL ERROR	01/01/2005	01/01/2005	00	000	0400000000	01	400	04000000000000000000
37	FINAL GLOBALISATION DECLARATION REGISTERED	01/01/2005	01/01/2005	00	000	0400000000	04	400	04000000000000000000
38	FINAL GLOBALISATION DECLARATION REGISTERED	01/01/2005	01/01/2005	00	000	0400000000	04	400	04000000000000000000
39	LATEST SUBSEQUENCES - CONTENT ERROR	01/01/2005	01/01/2005	00	000	0400000000	04	400	04000000000000000000
40	FINAL GLOBALISATION DECLARATION - ACCEPTED	01/01/2005	01/01/2005	00	000	0400000000	04	400	04000000000000000000
41	FINAL GLOBALISATION DECLARATION REGISTERED	01/01/2005	01/01/2005	00	000	0400000000	01	400	04000000000000000000
42	FINAL GLOBALISATION DECLARATION - ACCEPTED	01/01/2005	01/01/2005	00	000	0400000000	01	400	04000000000000000000
43	UPRN	01/01/2005	01/01/2005	00	000	0400000000	01	400	04000000000000000000
44	FINAL GLOBALISATION DECLARATION - ACCEPTED	01/01/2005	01/01/2005	00	000	0400000000	01	400	04000000000000000000



MIC solution – shipment data is used as data source as for both globalization as well as transactional declarations:

BEPLDA-142 TWO ITEMS IPR/FC DECL TYPE IM BEIS

Status: CLOSED

Requesty automatically

SHIPMENT | INVOICES/LINES | PREVIOUS DOCUMENTS/DOCUMENTS/PARTNERS/ATTRIBUTES/ADDITIONAL INFORMATION | DUTIES | COMMUNICATION/LOGBOOK/DEFAULTS/VAE

Details

Declaration Type: Z **Globalization**

Declaration Date: 08/04/2019

Local Reference/Partial: BEPLDA-142 TWO ITEMS IPR/FC DECL TYPE IM I

Shipment ID/Month: 4110 201904

Type of Import/Walk: No

Status Representative: Incomplete

Fallback: _____

Gross/Net Weight (kg): 200.0000

Authorization Object: _____

Customs/Transport

City (Orig./Dest./Dest./City): US BE

Airport of Departure: _____

Office of Entry: BE032000

Destination Customs Office: _____

Payment Type: A

Carrier: _____

Est. Arrival Date: _____

MoT at the Border: 1 US TESTID

Vessel Mode of Transport: 3 MINKA

Container Code: 0

Supervising customs office: _____

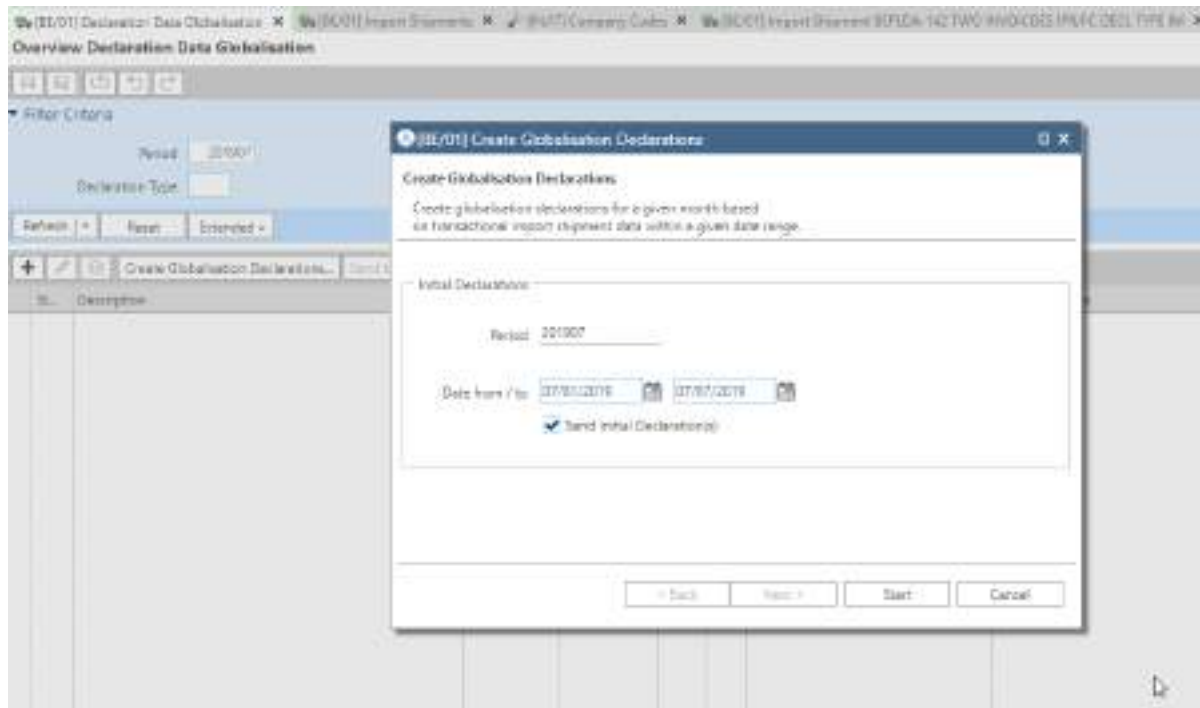
Author location of Goods: RESHNEJ142001

Region: 1

Location of Goods (EE): _____



MIC solution – How to create globalization declarations out of source (shipment) data





MIC solution – Screen for globalization declarations

Overview Declaration Data Maintenance

Filter Criteria: Period: 2019 | Currency Position: | Declaration Type: | Study Location: |

St.	Description	RefDate	Exp Date	Sec.	Doc	Description/Classification	Cross Location	Vehicle Office	ICD	Line Reference
1	INTERNAL QUALIFICATION DECLARATION ACCEPTED	21/01/2019	31/01/2019	04	001	903003540	903003530	903003501	400	903003500000000010
2	INTERNAL GLOBALIZATION DECLARATION ACCEPTED	21/01/2019	31/01/2019	04	001	903003540	903003530	903003501	400	903003500000000010

Declaration Data Maintenance

Details

Vehicle Office: 903003501

ICD: 400

Declaration Type: 04

Ref Date: 21/01/2019

Exp Date: 31/01/2019

Sec: 04

Doc: 001

Classification: 903003540

Cross Location: 903003530

Vehicle Office: 903003501

ICD: 400

Line Reference: 903003500000000010





MIC solution – Message and error tracking

Declaration Data Globalisation 0420183548207000002366
Status: LATEST SUBSEQUENT(S) - CONTENT ERROR

Buttons: Create Globalisation Declaration... Send Initial Declaration... Send Subsequent Declaration... Send Correction Declaration... Send Final Declaration

Tabs: DECLARATION | PARTNERS | DOCUMENTS/ADDITIONAL INFORMATIONS | COMMUNICATION/DUTIES

Communication

Logbook [6]

Open Lines

IC	Q	Type	Created	Sent	S	Technical Cont. Ref. ...	Number	Sender	Receiver
1		GLOBALISAT	01/04/2021 09:23:57	01/04/2021 09:23:57	9			B150411	
2		MIC-OK	01/04/2021 09:23:08	01/04/2021 09:23:08	9				
3		EDI08-SUBS	01/04/2021 09:23:01	01/04/2021 09:23:07	9			B150493	

Error Information [2]

Filter Criteria

Show



Code	Description	DocPos	Pointer
1 1100	Error while validating against the business rules		
2 ITEM_IM_0018	ITEM_IM_0018 Het veld 'Goederencode' moet 10 karakters bevatten.	2	

Overview Import Invoice Lines

Filter Criteria

Cancel

IC	Sh	Ln	Part Number	Part Description	Qty U.	Unit Price	Line Value	Curr.	Scale	Net Wgt.	Item Wgt.	Pa
1		2	3 0000144201		1,000 PZL		15,000,000	4000G				150,000
2		1	1 0000144201		1,000 PZL		15,000,000	4000G				150,000
3		2	3 0000144201		1,000 PZL		15,000,000	4000G				150,000



MIC solution – Scheduling of background jobs

Schedule

Schedule | Activate | Deactivate | Run Program now

Inactive | Valid | Pattern: 0 * * * * ?

Active

*Pattern: 0 * * * * ?

*Valid From: 09-15-2020

E-Mail on Status: _____

*E-Mail on Error: _____

Receiver: _____

E-Mail To: _____

Description: _____

Time Zone: _____

Valid To: _____

*E-Mail on Success: _____

*E-Mail on Conurrence: _____

E-Mail Cc: _____

Execution User: _____

Inactive | Valid | Subsequent whole month | Pattern: 0 0 25 * * ? | HAZNER

Inactive | Valid | Subsequent during start of month | Pattern: 0 30 23 1,2,3,4,5,6,7 * * ? | HAZNER

[IN/TT] Define Schedule Wizard

Criteria for current schedule:

Please enter the parameter values:

#	*Parameter Name	Description	Value	Received Dynamic Parameter	D
1	creationMode	Creation Mode	createSubsequentDeclarations		
2	dateFrom	Source Data with Declaration Date Fr	01.05.2020	01.05.2020	✓
3	dateTo	Source Data with Declaration Date u	to_date[30.05.2020; 'dd.mm.yyyy?]	2020-05-30 00:00:00.0	✓
4	period	Period of Globalisation Declaration	205005	205005	✓
5	sendInitialDeclaration	Send Initial Declaration after creation	true		





Questions & Answers





European Offices

Headquarters
MIC Datenverarbeitung GmbH
4020 Linz, Hafenstraße 24
Austria
Tel.: +43 (0)732-778496
Fax: +43 (0)732-778496-600
sales@mic-cust.com
www.mic-cust.com

MIC Logistik AG
8200 Schaffhausen, Neustadt 23
Switzerland
Tel.: +41 (0)52-630 22 00
Fax: +41 (0)52-630 22 01
info@mic-logistik.ch
www.mic-logistik.ch

**DHF Logistik Software- und
Datenverarbeitungs GmbH**
5020 Salzburg, Jakob-Haringer-Str. 1
Austria
Tel.: +43 (0)662-887326-0
Fax: +43 (0)662-887326-820
office@dhf.at
www.dhf.at

Contact Office for Benelux & France
2018 Antwerp, De Keyserlei 58/60
bus 19
Belgium
Tel.: +32 (0)3-3049531
sales-be@mic-cust.com

MIC Logistik GmbH
91052 Erlangen
Allee am Röthelheimpark 45
Germany
Tel.: +49 (0)9131-91619-155
office-de@mic-cust.com

Americas Offices

East Coast
MIC Logistics Corporation
29777 Telegraph Road, Suite 1130
Southfield, MI 48034, USA
Tel.: +1 (248)304-4460
info@mic-cust.com
www.mic-cust.com

West Coast
MIC Logistics Corporation
915 Broadway St., Suite 150
Vancouver, WA 98660, USA
Tel.: +1 (248)304-4460
info@mic-cust.com
www.mic-cust.com

**MIC Customs Solutions
México, S.A. de C.V.**
Paseo de la Reforma 296, Piso 38
Col. Juárez, Delegación Cuauhtémoc
C.P. 06600, Ciudad de México
Mexico
office-mx@mic-cust.com
www.mic-cust.com

Asian Offices

MIC Customs Solutions TH Ltd.
Level 33 Interchange 21 Building,
399 Sukhumvit Road (Soi 21),
North Klongtoey, Wattana,
Bangkok 10110
Thailand
Phone: +66 2 660 6252
office-th@mic-cust.com

www.mic-cust.com



Service Public
Fédéral
FINANCES



VRAGEN

WWW.FIN.BELGIUM.BE

DOUANES ET ACCISES • SERVICE PUBLIC FÉDÉRAL FINANCES

.be

VRAGEN

Wat met anti-dumping en e-globalisering?

Het opnemen van anti-dumping in de e-globalisering zal door de AGD&A opnieuw worden geëvalueerd. Wij overwegen ook of aan bepaalde voorwaarden moet worden voldaan. Een interne vergadering is gepland voor medio maart. Meer informatie volgt via het Nationaal Forum.

Moet ik mijn vergunningen aanpassen om van globalisatie over te stappen naar e-Globalisatie?

Neen, je hoeft niets te wijzigen aan je huidige vergunningen om over te stappen naar e-Globalisatie.

VRAGEN

Wanneer kunnen softwareproviders die niet voor proefprojecten is bestemd, doorgaan met de ontwikkeling?

Bedrijven die niet hebben deelgenomen aan het pilootproject kunnen al beginnen met ontwikkelen en testen.

Moeten we nu wekelijkse aangiften insturen?

U kunt maandelijkse of wekelijkse rapporten indienen. Voor maandelijkse en wekelijkse globalisering is het raadzaam regelmatig tussentijdse berichten te verzenden en niet te wachten tot het einde van de periode. Dit is om prestatieproblemen te voorkomen.



VRAGEN

De berekening van de verschuldigde invoerrechten wordt uitgevoerd door het PLDA:

Worden in het response bericht de berekende invoerrechten tot op lijn niveau bevestigd?

Ja

Op welk moment worden de invoerrechten verrekend op de rekening courant?
Gebeurt dit pas NA het bericht 'final'?

Bij het insturen van het finale bericht moet het openstaande bedrag beschikbaar zijn op de FRCT-rekening. De aangifte zal niet vrijgegeven worden als er niet voldoende geld op de FRCT-rekening staat. Je ontvangt hiervan een foutbericht. Je kan een 2 de finaal bericht sturen eens er voldoende geld op de FRCT-rekening staat. Je wacht dus best met het insturen van het finaal bericht tot er voldoende geld op de FRCT-rekening staat. Alles dient voor de 10 de kalenderdag van de maand volgend op de maand van activiteiten te gebeuren.

VRAGEN

Wordt er rekening gehouden met wijzigingen in wisselkoersen.

Ja, het systeem houdt hier rekening mee.

Is er een mogelijkheid tot insturen van douane data via SAP + interface OF zonder SAP + interface: voor- + nadelen van beide alternatieven ?

Dit is mogelijk, maar dien je verder te bespreken met de integrator of de softwareleverancier.