



Federal  
Public Service  
**FINANCE**



# PRESENTATION NOTIFICATION TEMPORARY STORAGE DECLARATION

MESSAGE IMPLEMENTATION GUIDE V 0.1.0

Joelle Lauwers  
Yves Arys  
Customs & Excise

20/05/2021

[WWW.FIN.BELGIUM.BE](http://WWW.FIN.BELGIUM.BE)

CUSTOMS AND EXCISES • FEDERAL PUBLIC SERVICE FINANCE

.be



# AGENDA

1. Introduction
2. PN-TS system scope
3. Collaborative approach within ETCIT II
4. TS scenario's overview
5. Pre-lodged message flow
6. Combined message flow
7. Amendment message flow
8. Invalidation message flow
9. Business rules guidance
10. Q&A



Federal  
Public Service  
**FINANCE**

# 1. INTRODUCTION



## 2. PN-TS SYSTEM SCOPE (1)

- **Presentation Notification**

- *Art. 139 UCC : « Goods brought into the customs territory of the Union shall be presented to customs immediately upon their arrival at the designated customs office or any other place designated or approved by the customs authorities... »*

- **Temporary Storage Declaration**

- *Art. 145 UCC : « Non-Union goods presented to customs shall be covered by a temporary storage declaration containing all the particulars necessary for the application of the provisions governing temporary storage. »*

- **End of temporary Storage**

- *Art. 149 UCC : « Non-Union goods in temporary storage shall be placed under a customs procedure or re-exported within 90 days. »*



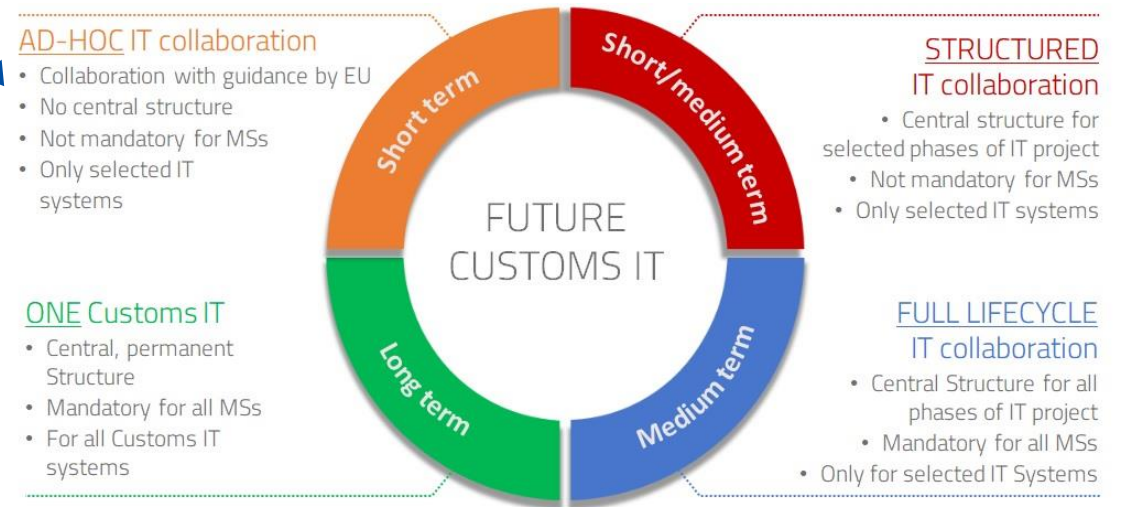
## 2. PN-TS SYSTEM SCOPE (2)

- **In scope:**
  - Presentation upon entry: submission and revocation of PN (G3)
  - Placement under TS: submission, amendment and invalidation of TSD (G4)
  - End of temporary storage: TS timer monitoring, write-off and notification to EO
  - Goods accounting: transfers between TSF and temporary storage reporting (= facilitation)
- **Not in scope:**
  - Notification of arrival of the means of transport (G2) → ICS2
  - Presentation for pre-lodged customs declarations → export (C2), transit (D4), import (I2)
  - Presentation of Union goods (PoUS)



### 3. COLLABORATIVE APPROACH WITHIN ETCIT II (1)

- ETCIT = Expert Team on new approaches to develop and operate Customs IT systems
- 2017-2018: ANPNTS phase 1
  - BPMN Level 3 review
  - BPMN Level 4 design
  - conceptual data model
- 2018-2019: ETCIT I
  - Brainstorming on collaboration
  - Identification of pilot projects
- 2019-today: ETCIT II
  - ANPNTS phase 2 = Pilot project to test « Ad-hoc short term scenario »
  - Analysis, architecture and implementation of PN-TS (+GA)

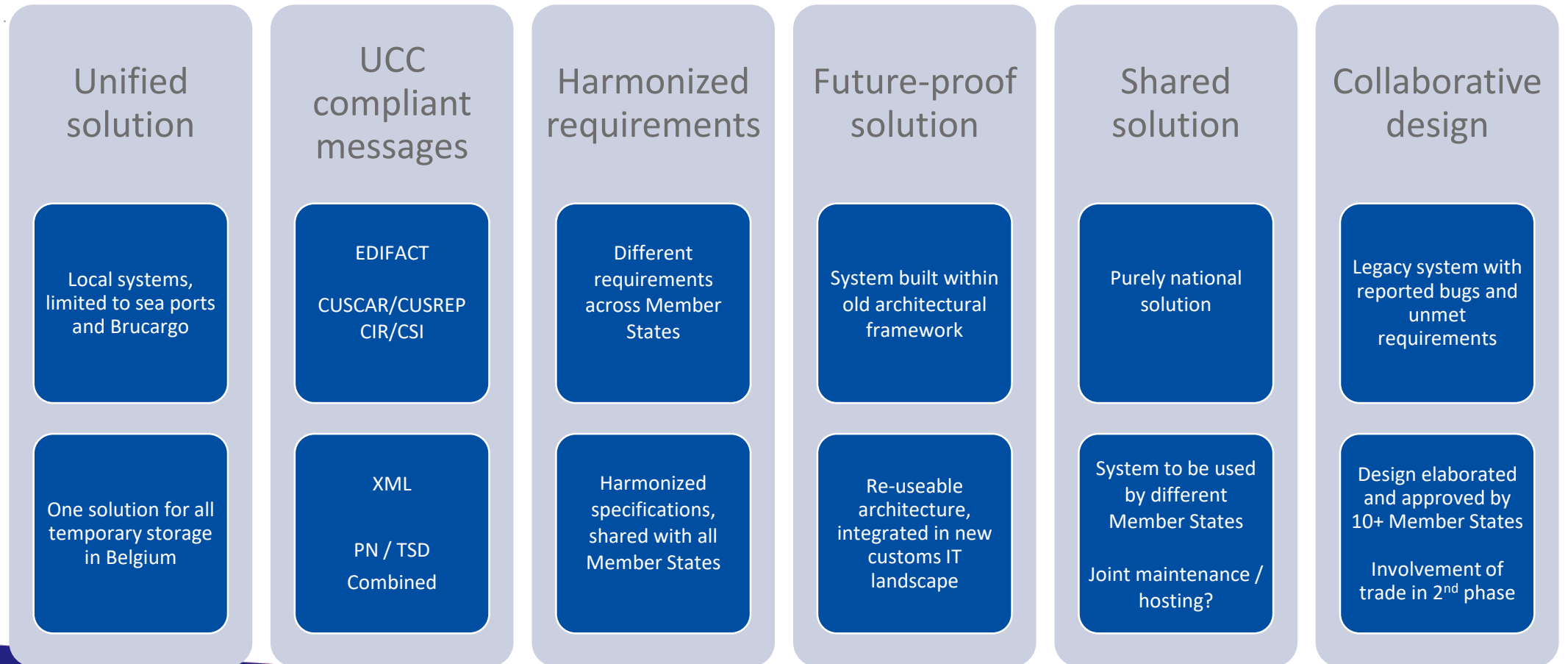




### 3. COLLABORATIVE APPROACH WITHIN ETCIT II (2)

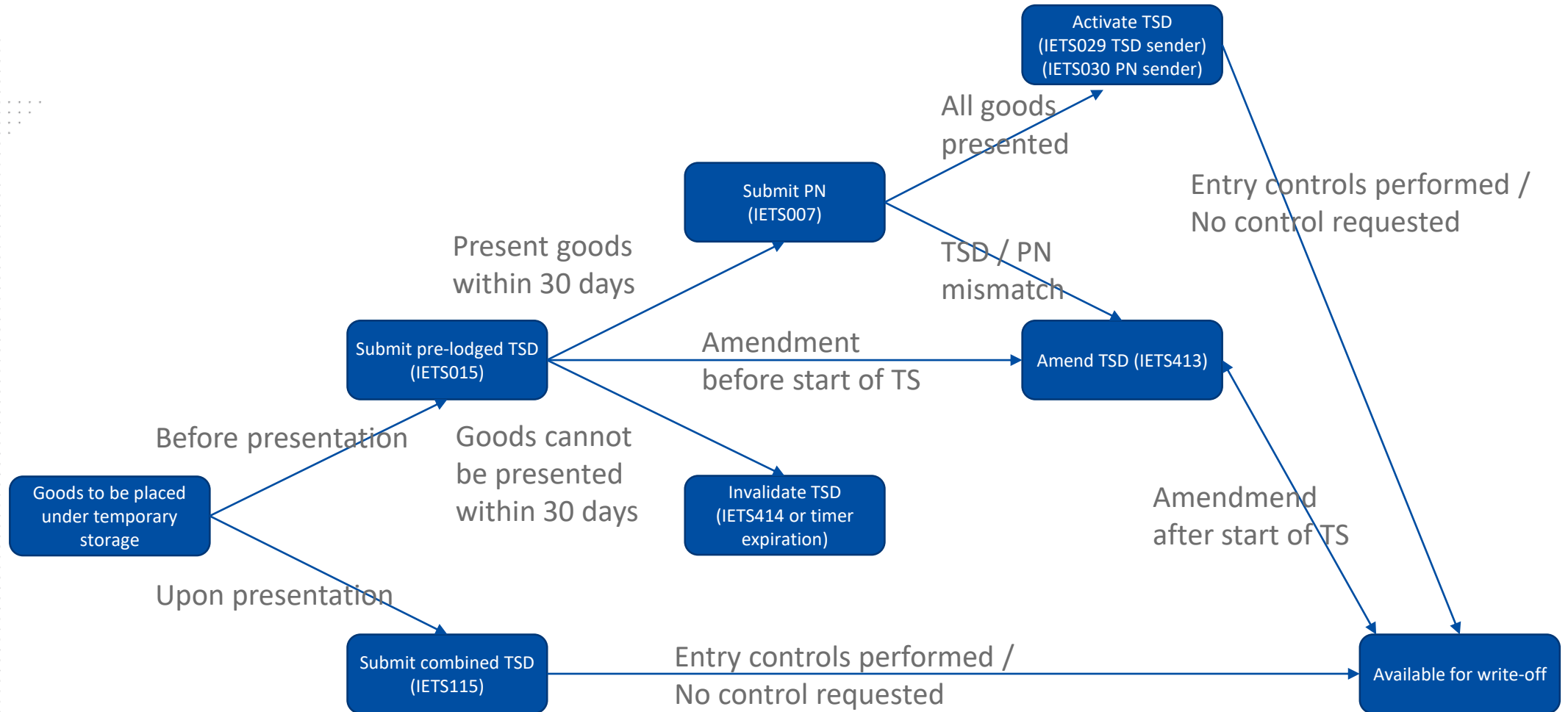
**AS IS**

**TO BE**





## 4. TS SCENARIO'S OVERVIEW

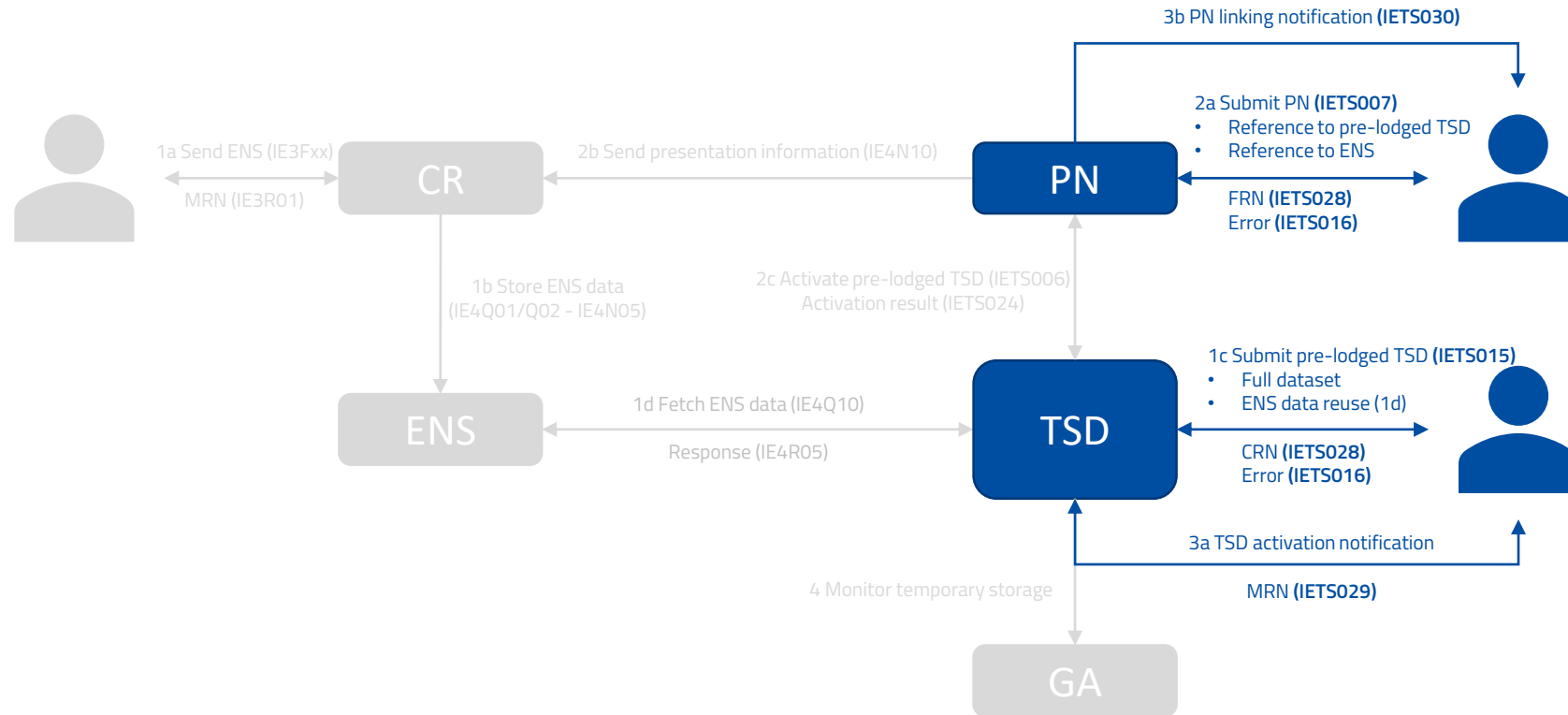






# 5. PRE-LODGED MESSAGE FLOW

MIG v0.1.0

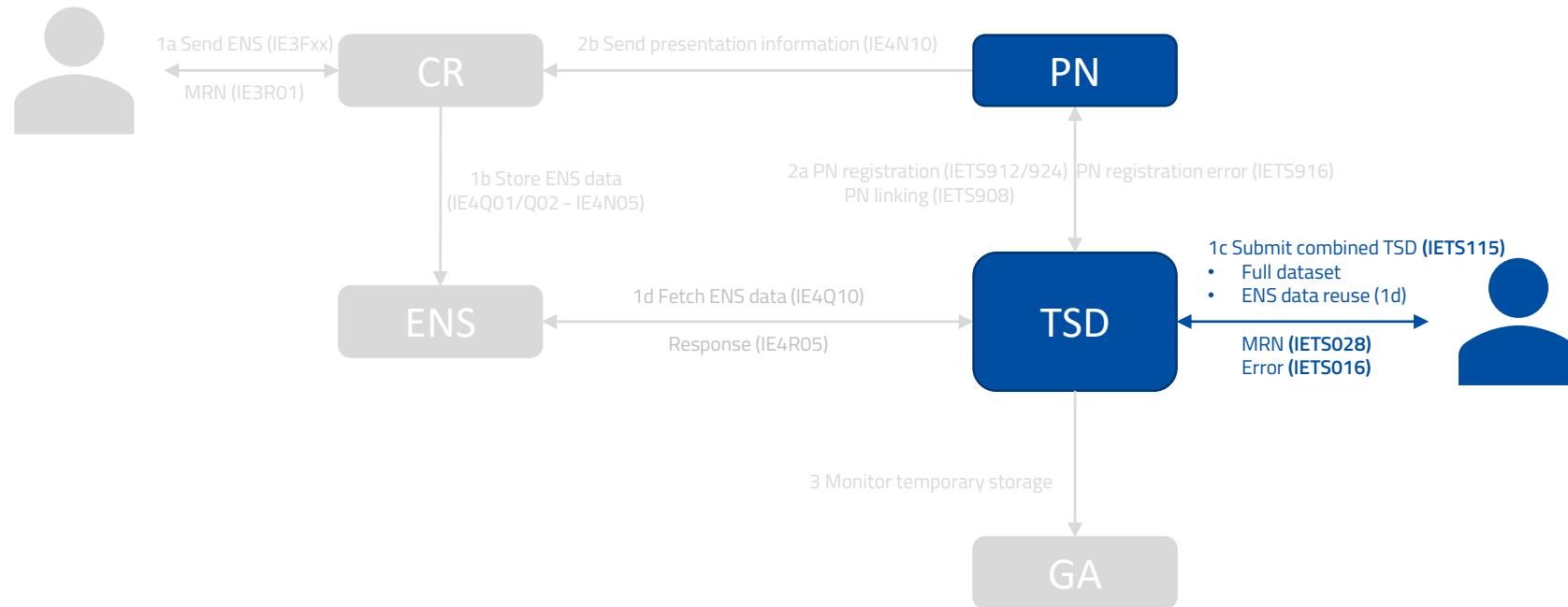


PN = Presentation notification component  
 TSD = Temporary storage declaration component  
 GA = Goods accounting component  
 ENS = Entry summary declaration data source  
 CR = ENS Common Repository



# 6. COMBINED MESSAGE FLOW

MIG v0.1.0

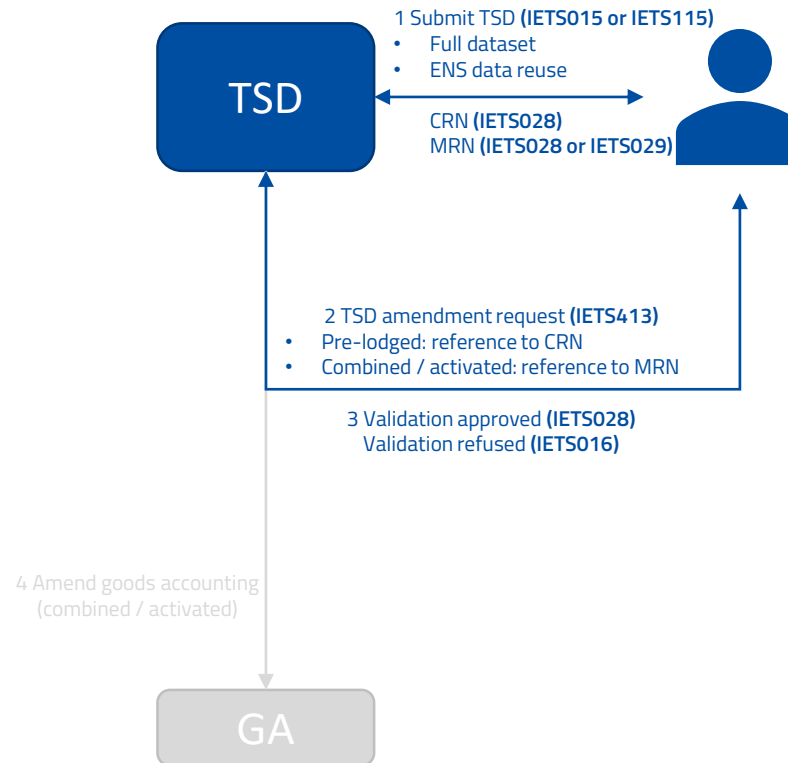


PN = Presentation notification component  
 TSD = Temporary storage declaration component  
 GA = Goods accounting component  
 ENS = Entry summary declaration data source  
 CR = ENS Common Repository



MIG v0.1.0

## 7. AMENDMENT MESSAGE FLOW

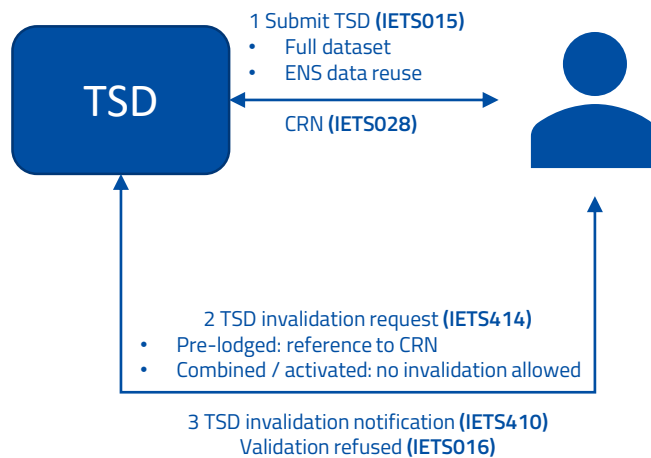


PN = Presentation notification component  
TSD = Temporary storage declaration component  
GA = Goods accounting component  
ENS = Entry summary declaration data source  
CR = ENS Common Repository



MIG v0.1.0

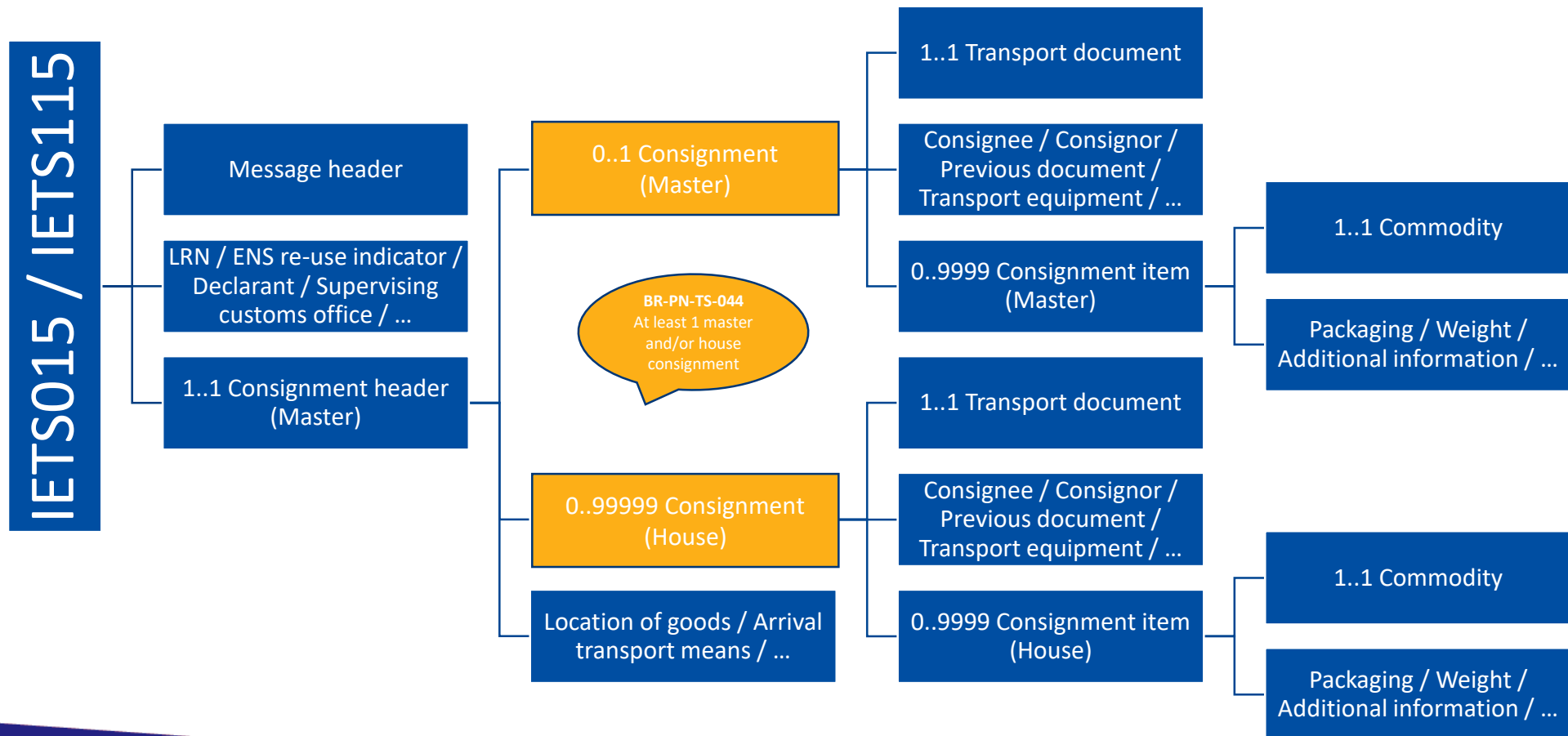
## 8. INVALIDATION MESSAGE FLOW



PN = Presentation notification component  
TSD = Temporary storage declaration component  
GA = Goods accounting component  
ENS = Entry summary declaration data source  
CR = ENS Common Repository

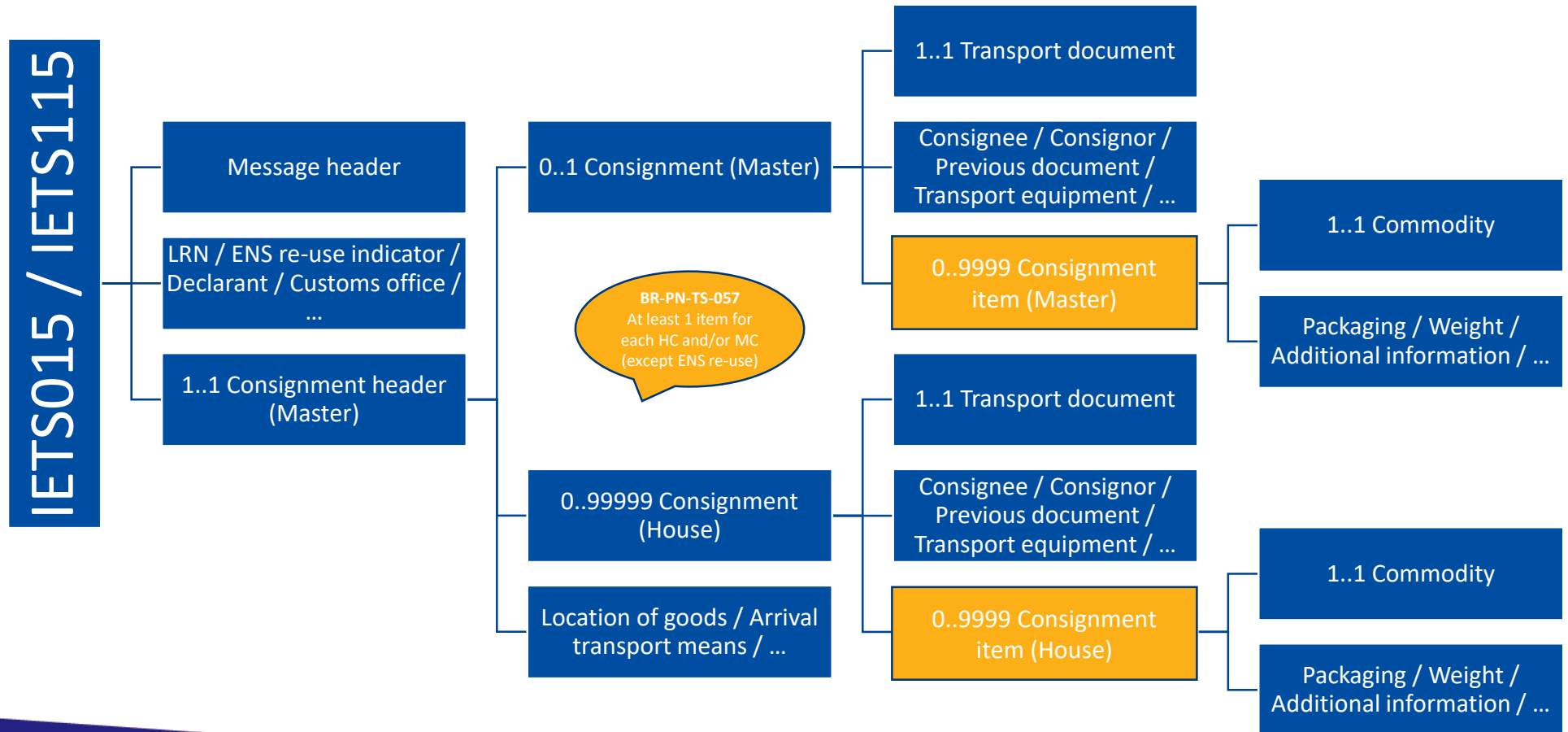


## 9. BUSINESS RULES GUIDANCE: TSD CONSIGNMENT (ITEM) DETAILS



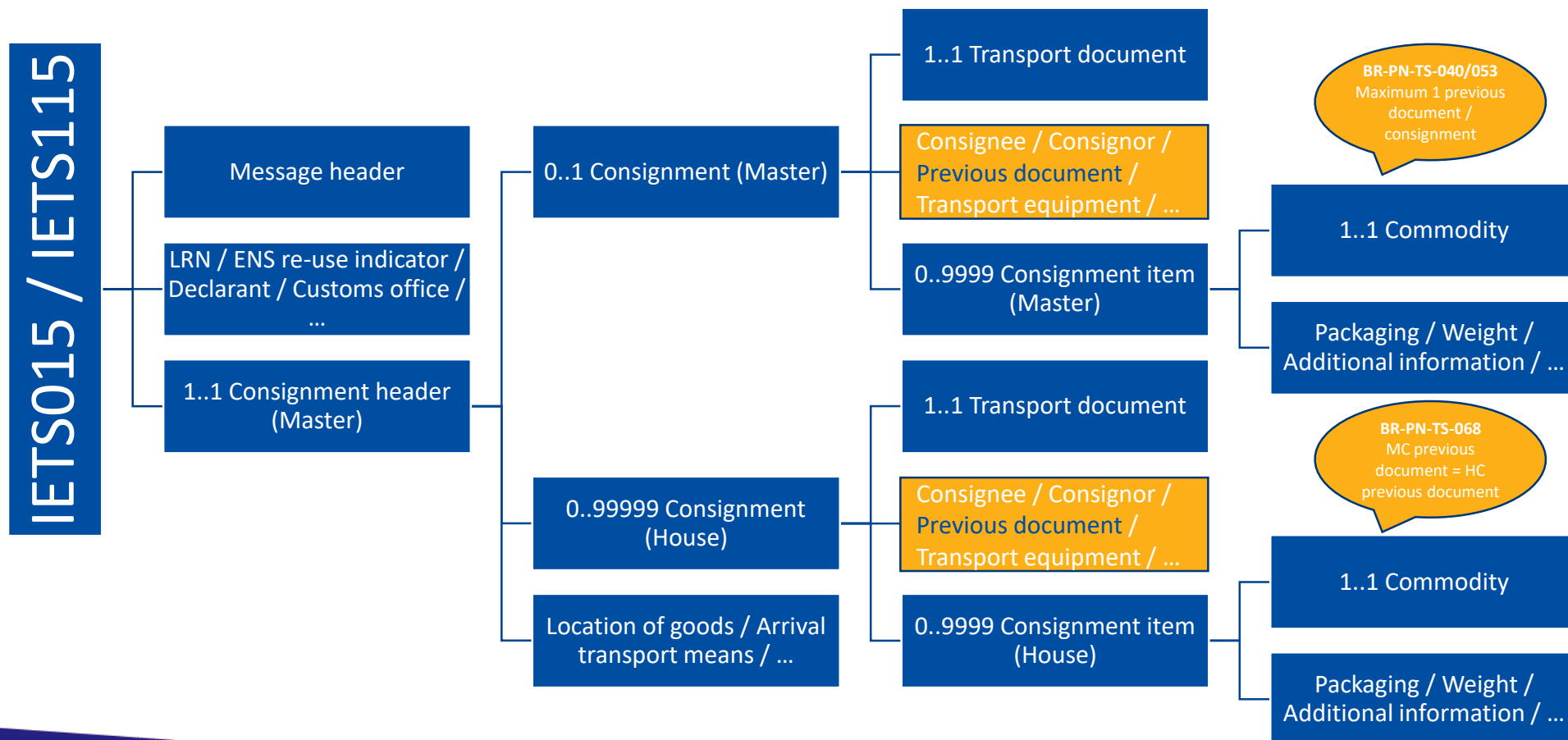


## 9. BUSINESS RULES GUIDANCE: TSD CONSIGNMENT (ITEM) DETAILS





## 9. BUSINESS RULES GUIDANCE: TSD CONSIGNMENT (ITEM) DETAILS





## 9. BUSINESS RULES GUIDANCE: TSD AMENDMENTS

- One TSD amendment request message (IETS413) for both IETS015 and IETS115 (with and without ENS re-use)
  - When amending a pre-lodged TSD, data elements that are not part of the IETS015 data set **cannot be provided in the amendment request**, e.g.
    - Date and time of presentation
    - Customs office of presentation, ...
  - For a TSD with ENS re-use, **only the originally submitted data can be amended**, e.g. :
    - HC transport document id
    - Location of goods, ...
- Some attributes / classes **can never be amended**, e.g. :
  - Declarant identification number
  - ENS re-use indicator
  - MC transport document id, ...
- Some attributes / classes **can never be amended after the start of temporary storage**, e.g. :
  - Supervising customs office , ...
- Some attributes / classes require **approval of a customs officer** when they are amended after the start of temporary storage, e.g.
  - Transport document id
  - Packaging
  - Commodity code, ...
- All elements are listed in BR-PN-TS-113/114/115/116





## 9. BUSINESS RULES GUIDANCE: ENS RE-USE

- In case of ENS re-use, most of the consignment attributes and classes will be fetched from ENS and **cannot be provided** in IETS015 / IETS115 minimal data set (BR-PN-TS-098 / BR-PN-TS-099)
- Each TSD can only **re-use data from one ENS** (BR-PN-TS-100)
- Consignment data provided in IETS015 / IETS115 will define **which data will be fetched from ENS**

Data provided in minimal data set	Consignments fetched from ENS
Master transport document id only	All consignments (MC, MCI, HCs and HCI) available in the ENS declaration
Master and house transport document id(s)	Only house consignments mentioned in the TSD minimal data set (HC + HCI data), in addition to MC data (MCI excluded)
House transport document id(s) only	Only house consignments mentioned in TSD minimal data set (HC + HCI data), no MC / MCI data



## 9. BUSINESS RULES GUIDANCE: ENS RE-USE

- Example 1: all MC, MCI, HC and HCI data will be fetched from ENS with MRN 20BE00000889012AT4

```
<consignmentHeaderMasterLevel>
  <consignmentMasterLevel>
    <transportDocument>
      <referenceNumber>REF123456789</referenceNumber>
      <type>C624</type>
    </transportDocument>
    <previousDocument>
      <referenceNumber>20BE00000889012AT4</referenceNumber>
      <type>N355</type>
    </previousDocument>
  </consignmentMasterLevel>
</consignmentHeaderMasterLevel>
```



## 9. BUSINESS RULES GUIDANCE: ENS RE-USE

- Example 2: HC and HCI data from house consignments referring to transport document id's REF123456789 and REF234567890 will be fetched from ENS with MRN 20BE00000889012AT4, in addition to MC data from master consignment REF123456789

```
<consignmentHeaderMasterLevel>
  <consignmentMasterLevel>
    <transportDocument>
      <referenceNumber>REF123456789</referenceNumber>
      <type>C624</type>
    </transportDocument>
    <previousDocument>
      <referenceNumber>20BE00000889012AT4</referenceNumber>
      <type>N355</type>
    </previousDocument>
  </consignmentMasterLevel>
  <consignmentHouseLevel>
    <transportDocument>
      <referenceNumber>REF123456789</referenceNumber>
      <type>C625</type>
    </transportDocument>
    <previousDocument>
      <referenceNumber>20BE00000889012AT4</referenceNumber>
      <type>N355</type>
    </previousDocument>
  </consignmentHouseLevel>
  <consignmentHouseLevel>
    <transportDocument>
      <referenceNumber>REF234567890</referenceNumber>
      <type>C624</type>
    </transportDocument>
    <previousDocument>
      <referenceNumber>20BE00000889012AT4</referenceNumber>
      <type>N355</type>
    </previousDocument>
  </consignmentHouseLevel>
</consignmentHeaderMasterLevel>
```



## 9. BUSINESS RULES GUIDANCE: ENS RE-USE

- Example 3: HC and HCI data will be fetched from house consignments referring to transport document id's REF123456789 and REF234567890 included in ENS with MRN 20BE00000889012AT4

```
<consignmentHeaderMasterLevel>
  <consignmentHouseLevel>
    <transportDocument>
      <referenceNumber>REF123456789</referenceNumber>
      <type>C625</type>
    </transportDocument>
    <previousDocument>
      <referenceNumber>20BE00000889012AT4</referenceNumber>
      <type>N355</type>
    </previousDocument>
  </consignmentHouseLevel>
  <consignmentHouseLevel>
    <transportDocument>
      <referenceNumber>REF234567890</referenceNumber>
      <type>C624</type>
    </transportDocument>
    <previousDocument>
      <referenceNumber>20BE00000889012AT4</referenceNumber>
      <type>N355</type>
    </previousDocument>
  </consignmentHouseLevel>
</consignmentHeaderMasterLevel>
```



## 10. Q&A



## Q1 IK WEET DAT HET EEN DRAFT VERSIE IS, MAAR ER STAAT NIETS IN MET BETREKKING TOT HET OVERBRENGEN VAN GOEDEREN VAN DE ENE TEMPORARY STORAGE NAAR EEN ANDERE. WORDT DIT NOG VOORZIEN IN DE VOLGENDE VERSIE ?

- Specifications for transfers between temporary storage facilities located in Belgium will be published as part of the current MIG or a separate one. Analysis is planned to start early 2022, trade specifications will be communicated as soon as possible.
- Transfers between temporary storage facilities located in different Member States will be elaborated at a later stage of the project. Analysis will be executed at EU level in collaboration with trade.



## Q2 KUNNEN DE CODETABELLEN NIET BETER ONDER 1 MENUPUNT OP DE SITE WORDEN AANGEBODEN WAARVAN MEN ZE KAN DOWNLOADEN. IK GA ERVAN UIT DAT DE WAARDES IN EEN CODE TABEL GELIJK ZIJN ONGEACHT DE PROCEDURE/SOORT AANGIFTE. OF ZIE IK DIT VERKEERD?

- Most of the codelists are shared with other systems. We will consider having a dedicated section for common codelists on our website, but we will still include them in the separate MIGs for the sake of completeness.
- Some codelists are subsets of existing codelists (e.g. previous document type, qualifier of identification, ...). TBD if there is a need to create dedicated new codelists or not
- Finally, some codelists are PN-TS only (e.g. business validation type). For those, new dedicated codelists will be created.



## Q3 ER ZIJN EEN 3-TAL CODELISTS LEEG: CL016 (CUS CODES) → WAAR TE VINDEN?

CL141 (CUSTOMS OFFICE REFERENCE NUMBER) → ZELFDE ALS NCTS?  
CL144 (UNLOCODE) → OOK VOOR LUCHTHAVENS ? QUID IATA-NUMMER?

- CUS-codes can be found in ECICS database ([https://ec.europa.eu/taxation\\_customs/dds2/ecics/chemicalsubstance\\_consultation.jsp?Lang=en](https://ec.europa.eu/taxation_customs/dds2/ecics/chemicalsubstance_consultation.jsp?Lang=en))
- CO reference numbers are common for all declaration types ([https://ec.europa.eu/taxation\\_customs/dds2/rd/rd\\_consultation\\_location.jsp?Lang=en](https://ec.europa.eu/taxation_customs/dds2/rd/rd_consultation_location.jsp?Lang=en))
- UNLOCODE is linked to the authorisation for designated / approved / authorised places, which should also apply to airport locations. The first five characters are defined by the United Nations (<https://unece.org/fileadmin/DAM/cefact/locode/be.htm>). Additionally, up to 12 characters can be defined nationally.





## Q4 MASTER CONSIGNMENT EN HOUSE CONSIGNMENTS STAAN OP 1 LIJN. WAAROM HEEFT MEN DAARBOVEN NOG HET NIVEAU MASTER HEADER TOEGEVOEGD? UITEINDELIJK KAN MEN MAAR 1 MASTER HEADER EN 1 MASTER CONSIGNMENT STUREN.

- Some crucial data elements are linked to the master consignment according to EUCDM (e.g. location of goods, arrival transport means, ...). Master header level has been introduced to avoid overly complicated business rules or repeating the same information several times in case a TSD is lodged with only house consignment data.



## Q5 KAN MEN 1 ENS AFSCHRIJVEN MET MEERDERE TSD AANGIFTES?

- General rule: 1 ENS = 1 master consignment = 1 TSD ⇒ Only one previous document is allowed, as all declared house consignments are considered to be part of the same master consignment.
- In case of split consignments, a second ENS is lodged, with a new MRN, referring to the same master consignment ⇒ second TSD will refer to the second ENS
- It is allowed to refer to the same MRN within different TSD's. However, if only MC data is declared within the first TSD/PN, all HC will be considered presented by the Common Repository



## Q6 CL326 BEVAT GEEN CODE Y TERWIJL BEC0065 OF BEC0080 ER WEL VAN SPREEKT (ZIE OOK INFO P 114)

- Code Y is part of CL326, but was involuntary left out the table in the MIG. This typo will be corrected in the next version.
- For your reference the complete codelist:

Value	Definition
U	UNLOCODE
V	Customs office
W	GNSS
X	Economic operator
Y	Authorisation number