



Federal  
Public Service  
**FINANCE**

# EMCS PHASE 4.1

## OVERVIEW OF THE MAIN CHANGES INVOLVING TRADERS



## SUMMARY

- Deployment: big-bang
- New namespaces
- New version of the specifications
- Major change : export procedures (under duty suspension)
  - Removal of local clearance at export
  - Link with AES
  - Messages
    - Changes in existing messages
    - New message IE836
  - Rules, conditions and technical codelists
  - Alternative scenarios
- Other change - not related to export
- Planning



Federal  
Public Service  
**FINANCE**



# DEPLOYMENT OF EMCS PHASE 4.1 13TH FEBRUARY 2024

[WWW.FIN.BELGIUM.BE](http://WWW.FIN.BELGIUM.BE)

CUSTOMS AND EXCISES • FEDERAL PUBLIC SERVICE FINANCE



Federal  
Public Service  
**FINANCE**



# NEW NAMESPACES OF THE IE-MESSAGES VERSION NUMBER IS V3.13 INSTEAD OF 3.01

[WWW.FIN.BELGIUM.BE](http://WWW.FIN.BELGIUM.BE)

CUSTOMS AND EXCISES • FEDERAL PUBLIC SERVICE FINANCE



## NEW NAMESPACE OF THE IE-MESSAGES

- `<xs:import namespace="urn:publicid:-:EC:DGTAXUD:EMCS:PHASE4:EMCS:V3.13" schemaLocation="../types.xsd" />`
- `<xs:import namespace="urn:publicid:-:EC:DGTAXUD:EMCS:PHASE4:TMS:V3.13" schemaLocation="tms_national.xsd" />`
- `<xs:import namespace="urn:publicid:-:EC:DGTAXUD:EMCS:PHASE4:TCL:V3.13" schemaLocation="../tcl.xsd" />`
- `<xs:import namespace="urn:publicid:-:EC:DGTAXUD:EMCS:PHASE4:DOC:V3.13" schemaLocation="../doc.xsd" />`



Federal  
Public Service  
**FINANCE**

# NEW VERSION OF THE SPECIFICATIONS DDNEA V3.14 FESS V4.12

[HTTPS://FINANCIEN.BELGIUM.BE/NL/DOUANE\\_ACCIJNZEN/ONDERNEMINGEN/APPLICATIES-DA/TECHNISCHE-DOCUMENTATIE-0/EMCS#Q4](https://financien.belgium.be/nl/douane_accijnzen/ondernemingen/applicaties-da/technische-documentatie-0/emcs#q4)

[HTTPS://FINANCIEN.BELGIUM.BE/FR/DOUANES\\_ACCISES/ENTREPRISES/APPLICATIONS-DA/DOCUMENTATION-TECHNIQUE/EMCS#Q4](https://financien.belgium.be/fr/douanes_accises/entreprises/applications-da/documentation-technique/emcs#q4)



Federal  
Public Service  
**FINANCE**



## EXPORT PROCEDURES MOVEMENTS UNDER DUTY SUSPENSION

EXPORT PROCEDURES ARE NOT APPLICABLE FOR DUTY PAID  
MOVEMENTS





# EXPORT PROCEDURES – REMOVAL OF THE LOCAL CLEARANCE AT EXPORT

## Description:

“Local Clearance” used to exist in the previous Customs Legislation whereas, under the new Union Customs Code, it has been changed to Entry in the Declarant’s Record (EIDR).

In AES–P1 (Automated Export System), EIDR is out of scope

## Outcome

- The “Local Clearance” process have been removed from all artifacts of EMCS specifications:
- The sub-chapter “II.III.1 Local Clearance at Export” have been removed completely from the DDNEA.
- The texts in the sub-chapter “II.II.3 Cancellation of an e-AD by the Consignor (L4-CORE-01-10)”, the sub-chapter “II.III.2.2.1 Export Operation at office of export” and in the sub-chapter “II.V State-Transition Diagrams for Export Scenarios” have been updated accordingly in the DDNEA.
- Any reference of “Local Clearance” in C116, C148, C155, R196, R261, TC71 have been removed.





# EXPORT PROCEDURES – LINK WITH AES

## X-check happens in AES (instead of PLDA)

Exchange of messages between EMCS and AES during the different stages of X-checking.

## 2 New states of an e-ad

e-AD Request Accepted for Export

Accepted Export Declaration

## 2 main scenarios

Export Operation at Office of Export when MSA of Dispatch same as MSA of Destination/Export

Export Operation at Office of Export when MSA of Dispatch different than MSA of Destination/Export



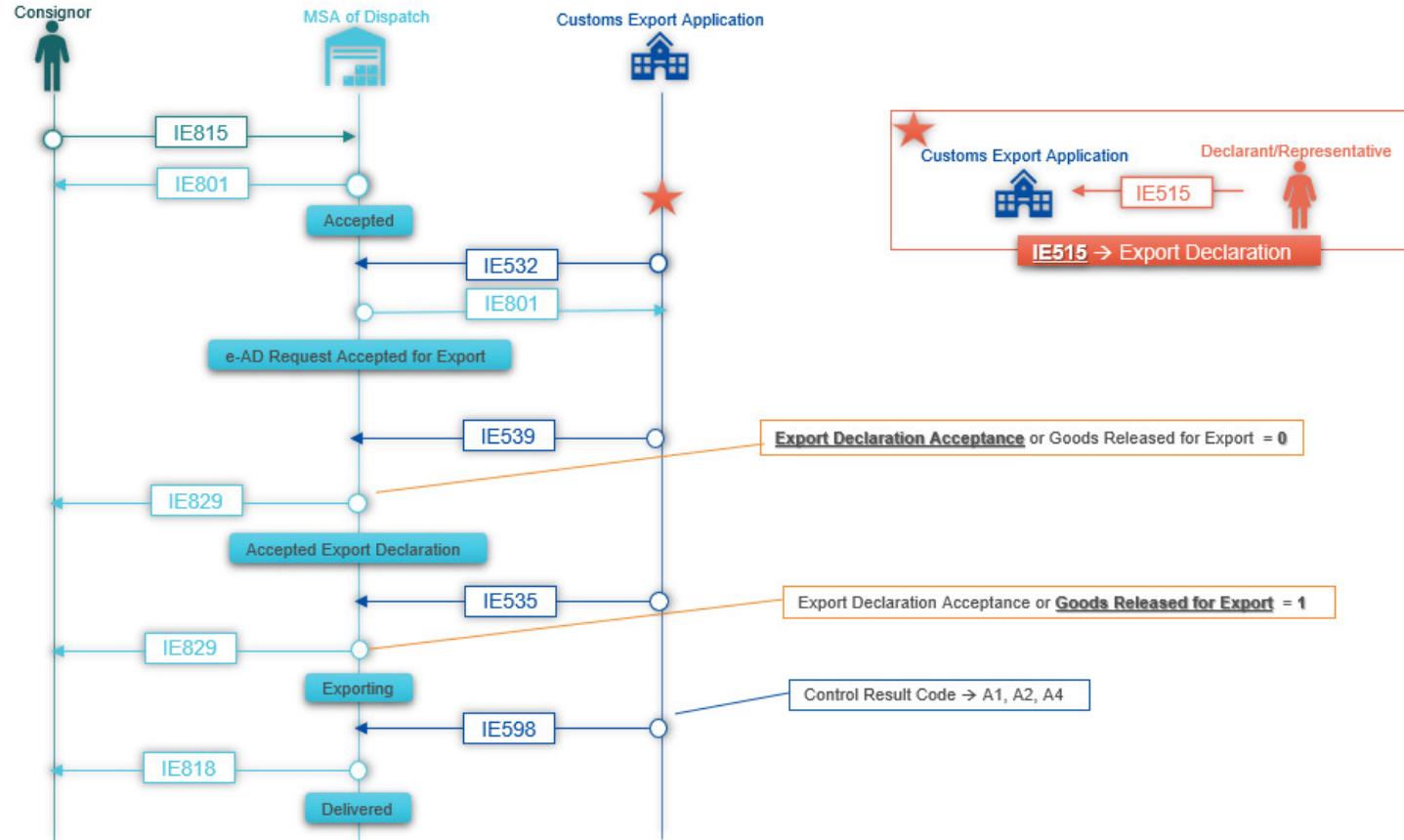
# EXPORT PROCEDURES – LINK WITH AES – HAPPY FLOW

- Export Operation at Office of Export followed by Export confirmation of exit (MSA of disp = MSA of dest/exp)



**AES IEs**

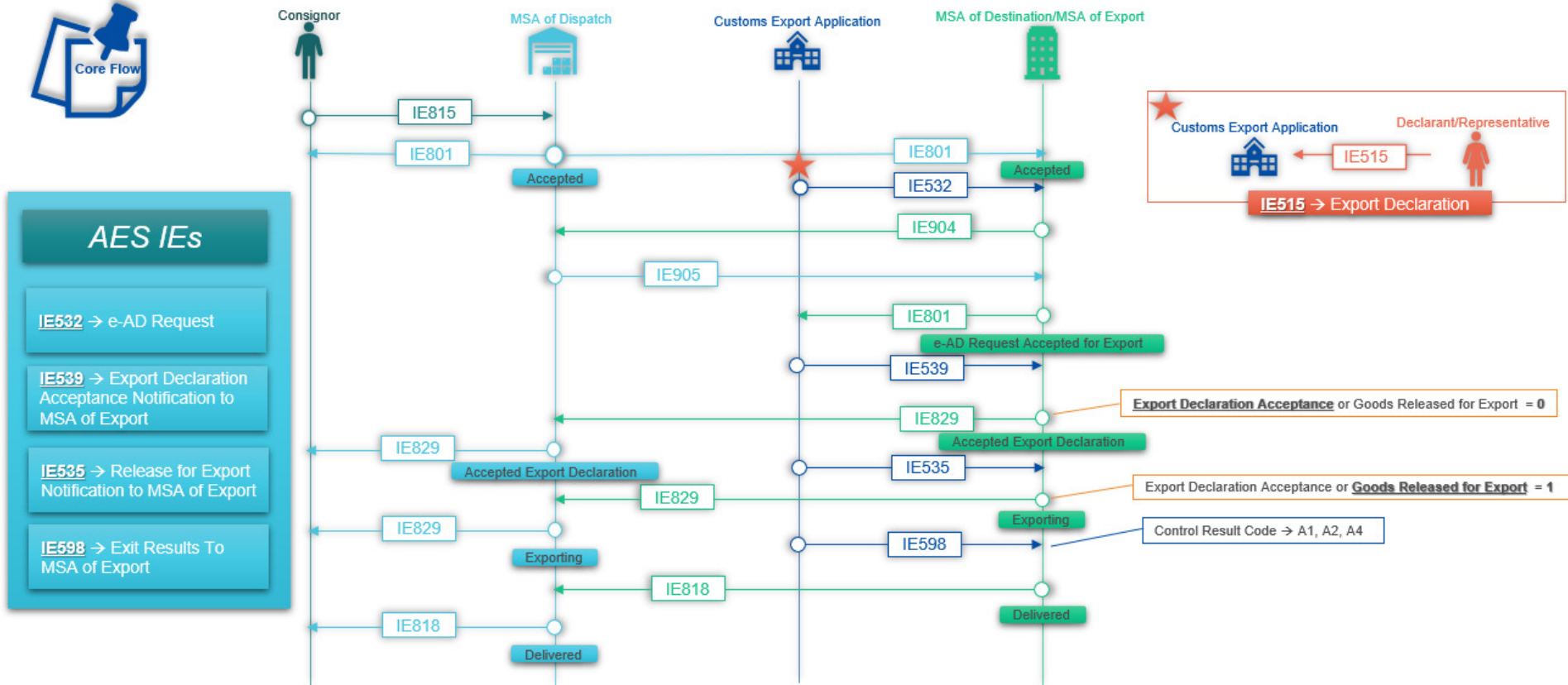
- IE532 → e-AD Request
- IE539 → Export Declaration Acceptance Notification to MSA of Export
- IE535 → Release for Export Notification to MSA of Export
- IE598 → Exit Results To MSA of Export





# EXPORT PROCEDURES – LINK WITH AES – HAPPY FLOW

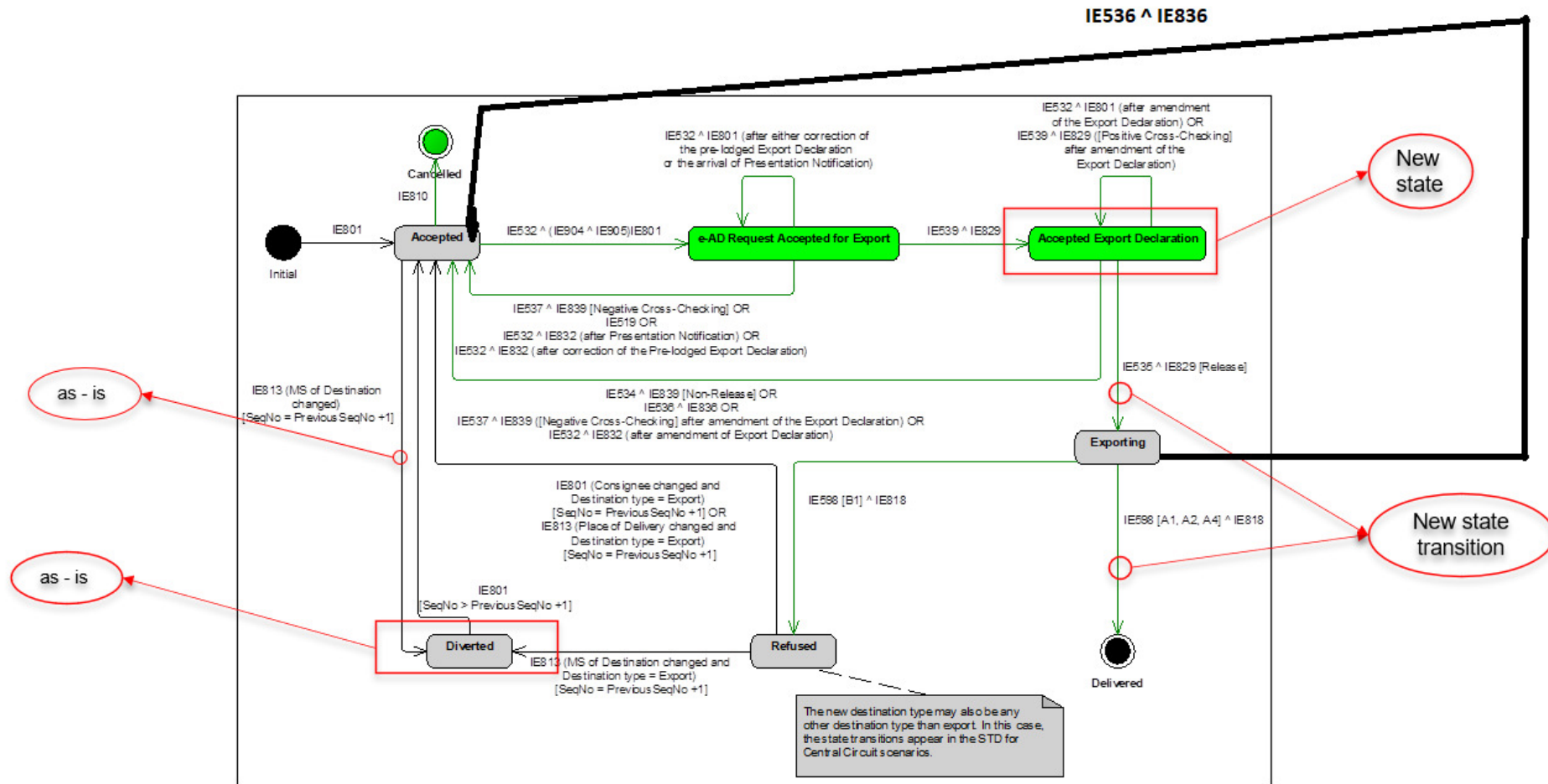
- Export Operation at Office of Export followed by Export confirmation of exit (MSA of disp not = MSA of dest/exp)





# EXPORT PROCEDURES – LINK WITH AES

State transition diagram when MS of Dispatch is different than MS of Export (see DDNEA main document)







Federal  
Public Service  
**FINANCE**



# EXPORT PROCEDURES MOVEMENTS UNDER DUTY SUSPENSION MESSAGES

[WWW.FIN.BELGIUM.BE](http://WWW.FIN.BELGIUM.BE)

CUSTOMS AND EXCISES • FEDERAL PUBLIC SERVICE FINANCE



# EXPORT PROCEDURES – CHANGES IN EXISTING MESSAGES

## IE829 NOTIFICATION OF ACCEPTED EXPORT (C\_EXP\_NOT)

- Datagroup Consignee Trader is R (removal of C148)
- Datagroup Export Acceptance becomes Export Declaration Acceptance/Release
- The messages is now used for 2 different purposes depending on TC27:
  - Acceptance of Export Declaration (0)
  - Release of Goods for Export (1)
- New condition C222

```
IF <EXCISE MOVEMENT E-AD. Export Declaration Acceptance or Goods Released for Export > is "0"  
THEN  
<EXPORT DECLARATION ACCEPTANCE/RELEASE.Date of Acceptance> is 'R'  
< EXPORT DECLARATION ACCEPTANCE/RELEASE.Date of Release> does not apply  
ELSE  
<EXPORT DECLARATION ACCEPTANCE/RELEASE.Date of Acceptance> does not apply  
<EXPORT DECLARATION ACCEPTANCE/RELEASE.Date of Release> is 'R'
```



# EXPORT PROCEDURES – CHANGES IN EXISTING MESSAGES

## IE829 NOTIFICATION OF ACCEPTED EXPORT (C\_EXP\_NOT)

MESSAGE	1x	R
---HEADER	1x	R
---(CONSIGNEE) TRADER	1x	<b>R</b>
---EXCISE MOVEMENT E-AD	999x	R
---(EXPORT PLACE) CUSTOMS OFFICE	1x	O
---EXPORT DECLARATION ACCEPTANCE/RELEASE	1x	R





# EXPORT PROCEDURES – CHANGES IN EXISTING MESSAGES

## IE829 NOTIFICATION OF ACCEPTED EXPORT (C\_EXP\_NOT)

### ---EXCISE MOVEMENT E-AD

Administrative Reference Code	R an21	R273
Sequence Number	R n..2	R232
Export Declaration Acceptance or Goods Released for Export	R n1	TC27

### ---(EXPORT PLACE) CUSTOMS OFFICE

Reference Number	R an8	R032 R236
------------------	-------	--------------

### ---EXPORT DECLARATION ACCEPTANCE/RELEASE

Reference Number of Sender Customs Office	R an8	R032 R236
---	-------	--------------

Identification of Sender Customs Officer	O an..35	
--	----------	--

Date of Acceptance	D date	C222
--------------------	--------	------

Date of Release	D date	C222
-----------------	--------	------

Document Reference Number	R an..21	R100
---------------------------	----------	------



# EXPORT PROCEDURES – CHANGES IN EXISTING MESSAGES

## IE839 CUSTOMS REJECTION OF E-AD (C\_CUS\_REJ)

- **IE839 can be used for 3 different purposes:**
  - Crosscheck is unsuccessful before release,
  - Goods are not released for export,
  - other
- Datagroup Consignee Trader is R (removal of C148)
- Datagroup EXPORT CROSS-CHECKING DIAGNOSIS becomes EXPORT DECLARATION INFORMATION  
Depending on C117
- 5 New datagroups
- 2 new conditions (C212 & C213)
- Condition C098 is removed and replaced by C212



# EXPORT PROCEDURES – CHANGES IN EXISTING MESSAGES

## IE839 CUSTOMS REJECTION OF E-AD (C\_CUS\_REJ)

MESSAGE	1x	R	
---HEADER	1x	R	
---(CONSIGNEE) TRADER	1x	R	
---(EXPORT PLACE) CUSTOMS OFFICE	1x	O	
---REJECTION	1x	R	
---EXPORT DECLARATION INFORMATION	1x	D	C117 →
-----NEGATIVE CROSS-CHECK VALIDATION RESULTS	99x	D	C212
-----UBR CROSS-CHECK RESULT	999x	R	
-----COMBINED NOMENCLATURE CODE CROSS-CHECK RESULT	1x	D	C213
-----NET MASS CROSS-CHECK RESULT	1x	D	C213
-----N_NON_DES	1x	D	C212
---C_EAD_VAL	999x	D	C212
---N_EAD_SUB	1x	D	C212

'R' if Rejection Reason Code is 'Negative Cross-check result' or 'Unsatisfactory Control Result at OoExp'

Instead of C098

New datagroups



# EXPORT PROCEDURES – CHANGES IN EXISTING MESSAGES

## IE839 CUSTOMS REJECTION OF E-AD (C\_CUS\_REJ)

### C147

Local Reference Number is 'R'

Rejection Reason Code is

'Negative Cross-check result'

Document Reference Number is

'R'

Rejection Reason Code is

'Unsatisfactory Control Result at

OoExp'

---REJECTION			
Rejection Date and Time	R	dateTime	
Rejection Reason Code	R	n1	TC18
---EXPORT DECLARATION INFORMATION			
Local Reference Number	D	an..22	C147
Document Reference Number	D	an..21	C147
			R100
-----NEGATIVE CROSS-CHECK VALIDATION RESULTS			
-----UBR CROSS-CHECK RESULT			
Administrative Reference Code	R	an21	R030
Body Record Unique Reference	R	n..3	
Diagnosis Code	R	n1	TC72
Validation Result	R	n1	TC27
Rejection reason	O	an..512	
-----COMBINED NOMENCLATURE CODE CROSS-CHECK RESULT			
Validation Result	R	n1	TC27
Rejection reason	O	an..512	
-----NET MASS CROSS-CHECK RESULT			
Validation Result	R	n1	TC27
Rejection reason	O	an..512	
-----N_NON_DES			
Document Reference Number	R	an..21	
---C_EAD_VAL			
Administrative Reference Code	R	an21	R030
Sequence Number	R	n..2	R232
---N_EAD_SUB			
Local Reference Number	R	an..22	

### C213

COMBINED

NOMENCLATURE CODE

CROSS-CHECK RESULT

is 'R'

Positive Validation Result

and Diagnosis Code is

'CN Codes do not match'

NET MASS CROSS-

CHECK RESULT is 'R'

Positive Validation Result

and Diagnosis Code is

'Weight/mass do not

match'

### C212

NEGATIVE CROSS-CHECK VALIDATION RESULTS is 'R'  
Rejection Reason Code is 'Negative Cross-check result'

N\_NON\_DES is 'R'

•Rejection Reason Code is 'Unsatisfactory Control Result at OoExp'

C\_EAD\_VAL is 'R'

•Rejection Reason Code is 'Negative Cross-check result'

•Rejection Reason Code is 'Unsatisfactory Control Result at OoExp'

N\_EAD\_SUB is 'R'

All other Rejection Reason Codes



# EXPORT PROCEDURES – NEW MESSAGE IE836

## IE836 EXPORT DECLARATION INVALIDATION NOTIFICATION TO MSA OF DISPATCH/CONSIGNOR (C\_INV\_DIS)

The export declaration can be invalidated:

After Acceptance but Before Release

(when state of the e-ad is "accepted Export Declaration")

After Acceptance and After Release

(when state of the e-ad is "exporting")

MESSAGE			
Message Sender		R	an..36
Message recipient		R	an..36
Date of preparation		R	date
Time of preparation		R	time
Message identifier		R	an..44
Correlation Identifier		D	an..44
			TR9121
<b>--EXCISE MOVEMENT</b>	<b>999x</b>	<b>R</b>	
Administrative Reference Code		R	an21
Sequence Number		R	n..2
			R030
			R232
<b>----EXPORT OPERATION</b>	<b>1x</b>	<b>R</b>	
MRN		R	an18
Invalidation date		R	an10
<b>----CUSTOMS OFFICE OF EXPORT</b>	<b>1x</b>	<b>R</b>	
Reference Number		R	an8
			R032
			R236
<b>----MSA OF EXPORT</b>	<b>1x</b>	<b>R</b>	
Country Code		R	a2
			BC11
<b>----GOODS SHIPMENT</b>	<b>1x</b>	<b>R</b>	
<b>-----PREVIOUS DOCUMENT</b>	<b>999x</b>	<b>R</b>	
Sequence number		R	n..5
Type		R	an4
Reference number		R	an..70



Federal  
Public Service  
**FINANCE**



# EXPORT PROCEDURES MOVEMENTS UNDER DUTY SUSPENSION RULES, CONDITIONS, TECHNICAL CODELISTS

[WWW.FIN.BELGIUM.BE](http://WWW.FIN.BELGIUM.BE)

CUSTOMS AND EXCISES • FEDERAL PUBLIC SERVICE FINANCE





## EXPORT PROCEDURES RULES, CONDITIONS AND TECHNICAL CODELISTS UPDATED C212 (DDNEA - APP D)

The wording for C212 was updated as follows:

IF <REJECTION.Rejection Reason Code> is 'Negative Cross-check result'  
THEN  
<NEGATIVE CROSS CHECK VALIDATION RESULTS> is 'R' AND  
<C\_EAD\_VAL> is 'R' AND<N\_NON\_DES> does not apply AND  
<N\_EAD\_SUB> does not apply

Export – Negative  
Cross Checking

ELSE IF <REJECTION.Rejection Reason Code> is 'Unsatisfactory Control Result at OoExp'  
THEN  
<NEGATIVE CROSS CHECK VALIDATION RESULTS> does not apply AND  
<C\_EAD\_VAL> is 'R' AND<N\_NON\_DES> is 'R' AND  
<N\_EAD\_SUB> does not apply

Export – Unsatisfactory  
Control Results

ELSE  
<NEGATIVE CROSS CHECK VALIDATION RESULTS> does not apply AND  
<C\_EAD\_VAL> does not apply AND  
<N\_NON\_DES> does not apply AND  
<N\_EAD\_SUB> is 'R'

Import



# EXPORT PROCEDURES RULES, CONDITIONS AND TECHNICAL CODELISTS UPDATED CODELISTS (DDNEA - APP B)



Federal  
Public Service  
**FINANCE**

## TC16 GLOBAL CONCLUSION OF RECEIPT

Details:

Code	Description
1	Receipt accepted and satisfactory
2	Receipt accepted although unsatisfactory
3	Receipt refused
4	Receipt partially refused
21	Exit accepted and satisfactory
22	Exit accepted with minor discrepancies detected
23	Exit refused

Changed from "Exit  
although unsatisfactory"

## TC18 CUSTOMS REJECTION REASON CODE

Details:

Code	Description
1	Import data not found
2	The content of the e-AD does not match with import data
3	(reserved)
4	Negative Cross-check result
5	Unsatisfactory Control Result at OoExp

'3' → Changed from "Export data not found"  
'4' → Changed from "The content of the e-AD does not match with export data"  
'5' → Changed from "Goods are rejected at export procedure"

## TC50 STATUS TYPE

Details:

Code	Description
X01	Accepted
X02	Cancelled
X03	Delivered
X04	Diverted
X05	Rejected
X06	Replaced
X07	e-AD/e-SAD Manually Closed
X08	Refused
X09	None
X10	Partially Refused
X11	Exporting
X12	Accepted for Export
X13	Stopped
X14	Accepted Export Declaration
X15	e-AD Request Accepted for Export

New values

# EXPORT PROCEDURES - RULES, CONDITIONS AND TECHNICAL CODELISTS

## UPDATED CODELISTS (DDNEA - APP B)



Federal  
Public Service  
**FINANCE**

### TC60 TECHNICAL MESSAGE TYPE

Details:

Code	Description
IE717	CONTROL REPORT
IE801	E-AD/E-SAD
IE802	REMINDER MESSAGE FOR EXCISE MOVEMENT
IE803	NOTIFICATION OF DIVERTED E-AD
IE807	INTERRUPTION OF MOVEMENT
IE810	CANCELLATION OF EAD
IE813	CHANGE OF DESTINATION
IE818	ACCEPTED OR (PARTIALLY) REFUSED REPORT OF RECEIPT/EXPORT
IE819	ALERT OR REJECTION OF AN E-AD/E-SAD
IE829	NOTIFICATION OF ACCEPTED EXPORT
IE836	EXPORT DECLARATION INVALIDATION NOTIFICATION TO MSA OF DISPATCH/CONSIGNOR
IE837	EXPLANATION ON DELAY FOR DELIVERY
IE839	REJECTION OF E-AD FOR EXPORT
IE840	EVENT REPORT
IE871	EXPLANATION ON REASON FOR SHORTAGE
IE880	MANUAL CLOSURE REQUEST
IE881	MANUAL CLOSURE RESPONSE
IE905	STATUS RESPONSE

### TC64 REQUESTED MESSAGE TYPE

Details:

Code	Description
IE801	E-AD/E-SAD
IE803	NOTIFICATION OF DIVERTED E-AD
IE807	INTERRUPTION OF MOVEMENT
IE810	CANCELLATION OF AN E-AD
IE813	CHANGE OF DESTINATION
IE818	ACCEPTED OR (PARTIALLY) REFUSED REPORT OF RECEIPT/EXPORT
IE819	ALERT OR REJECTION OF AN E-AD/E-SAD
IE829	NOTIFICATION OF ACCEPTED EXPORT
IE836	EXPORT DECLARATION INVALIDATION NOTIFICATION
IE839	REJECTION OF E-AD FOR EXPORT
IE881	MANUAL CLOSURE RESPONSE
IE905	STATUS RESPONSE
None	NONE

### TC72 DIAGNOSIS CODE

Details:

Code	Description
1	(reserved)
2	Body Record Unique Reference does not exist in the e-AD
3	No corresponding GOODS ITEM in the export declaration
4	Weight/mass do not match
5	The destination type code of the e-AD is not export
6	CN codes do not match

Changed from  
"Unknown ARC"

New values



Federal  
Public Service  
**FINANCE**

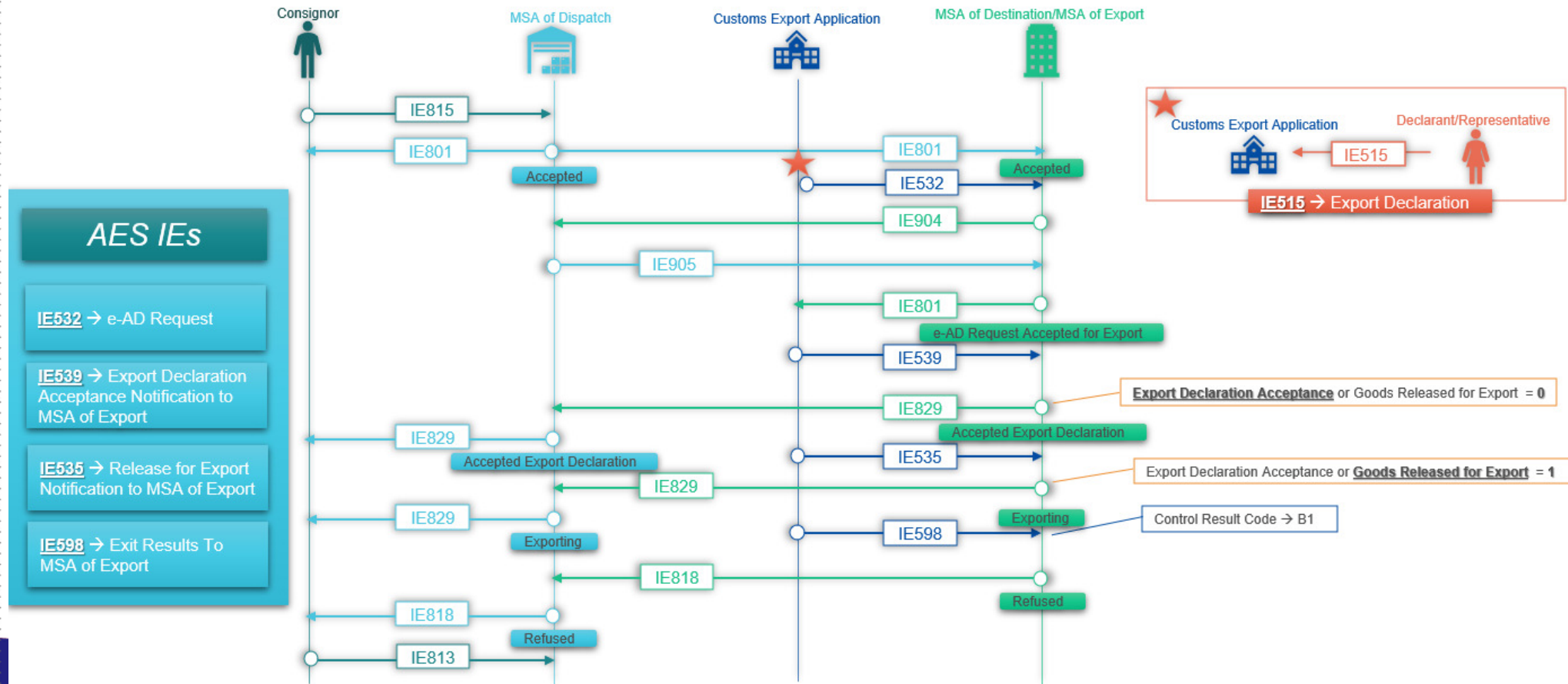


# EXPORT PROCEDURES MOVEMENTS UNDER DUTY SUSPENSION ALTERNATIVE SCENARIOS



# EXPORT PROCEDURES - ALTERNATIVE SCENARIO

- Export Operation at Office of Export followed by Export cancellation of exit (MSA of disp not = MSA of dest/exp)



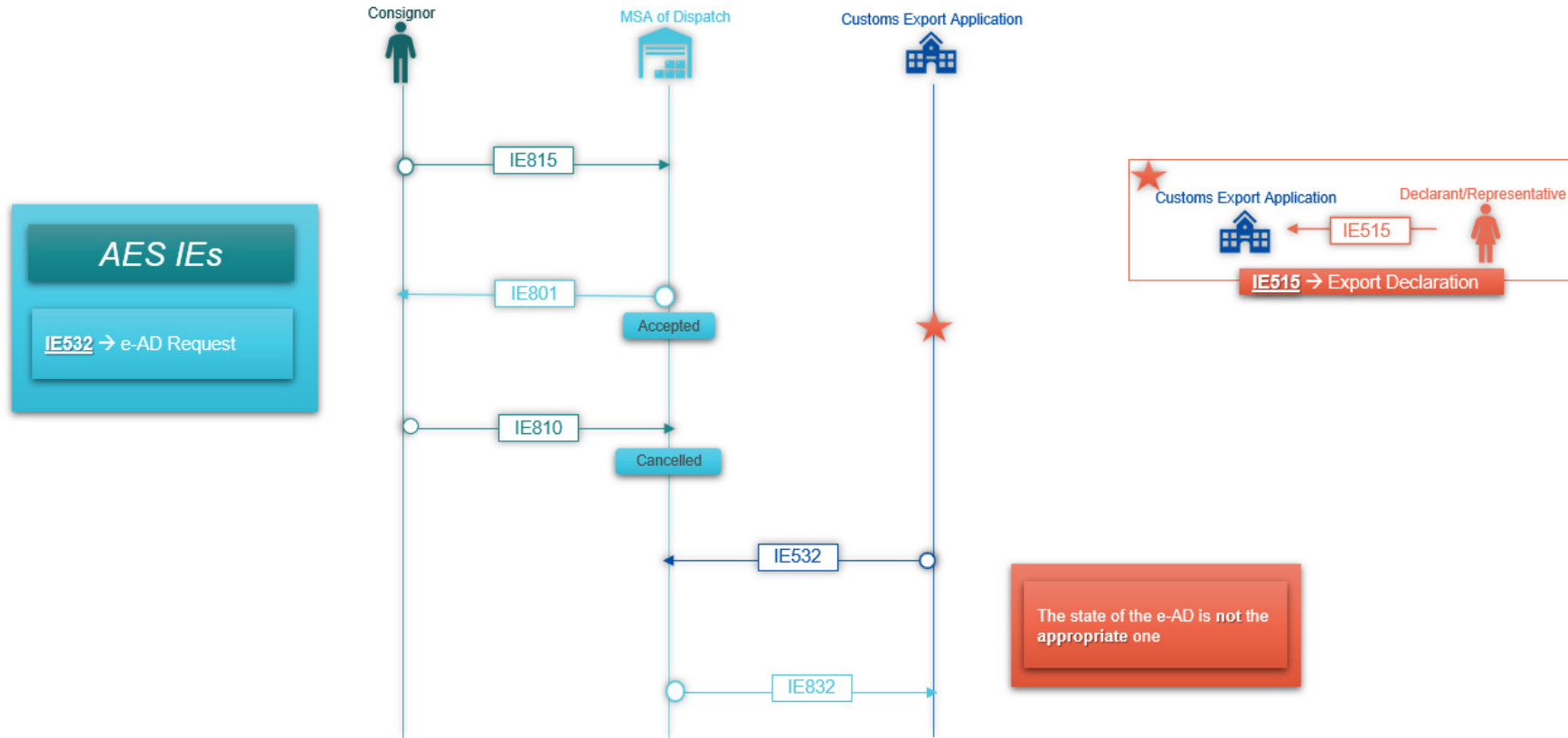




# EXPORT PROCEDURES - ALTERNATIVE SCENARIO

## Export Operation at Office of Export and Export Declaration Rejection due to e-AD Request Rejection

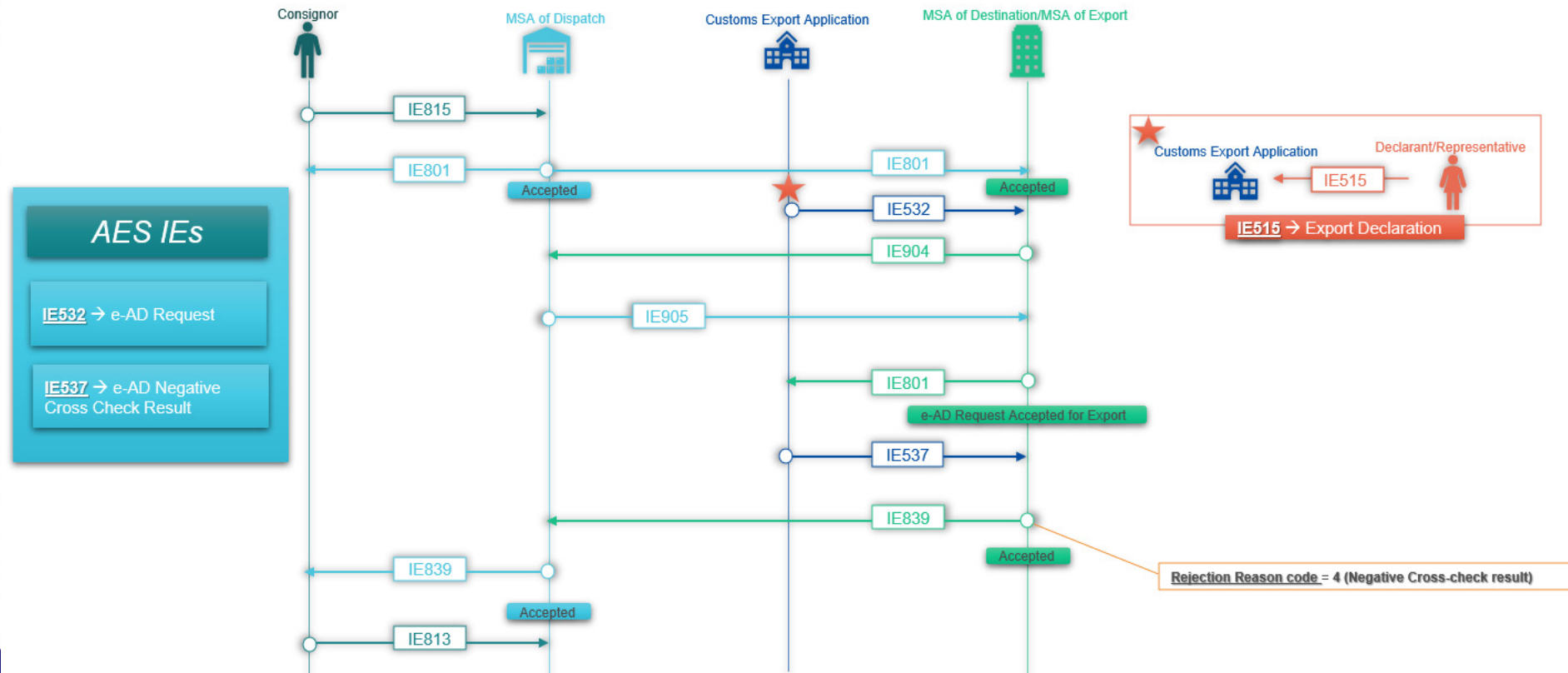
••• (MSA of disp = MSA of dest/exp)





# EXPORT PROCEDURES – ALTERNATIVE SCENARIO

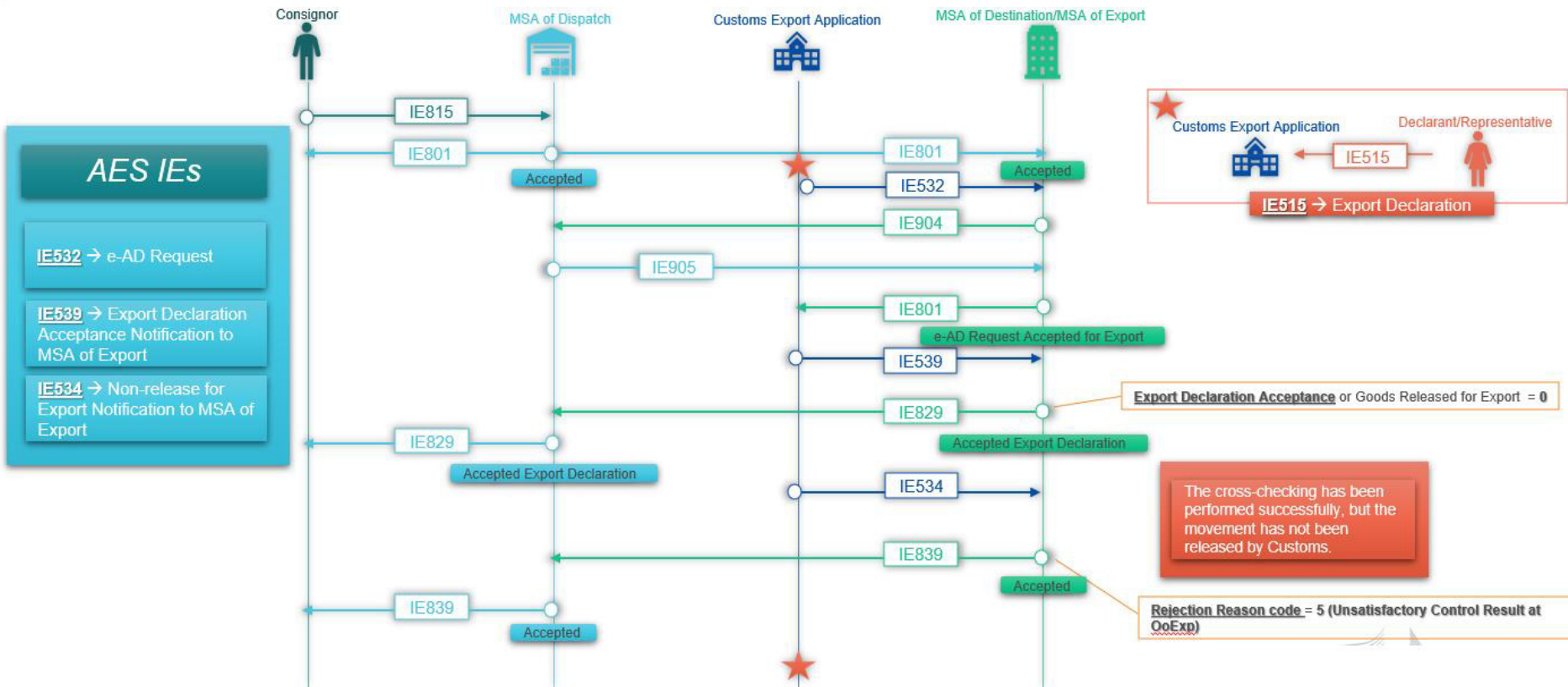
- Export Operation at Office of Export followed by negative cross-checking before the export release and Change of Destination (MSA of disp not = MSA of dest/exp)





# EXPORT PROCEDURES – ALTERNATIVE SCENARIO

- Export Operation at Office of Export and movement not released by Customs followed by new export declaration (MSA of disp not = MSA of dest/exp)

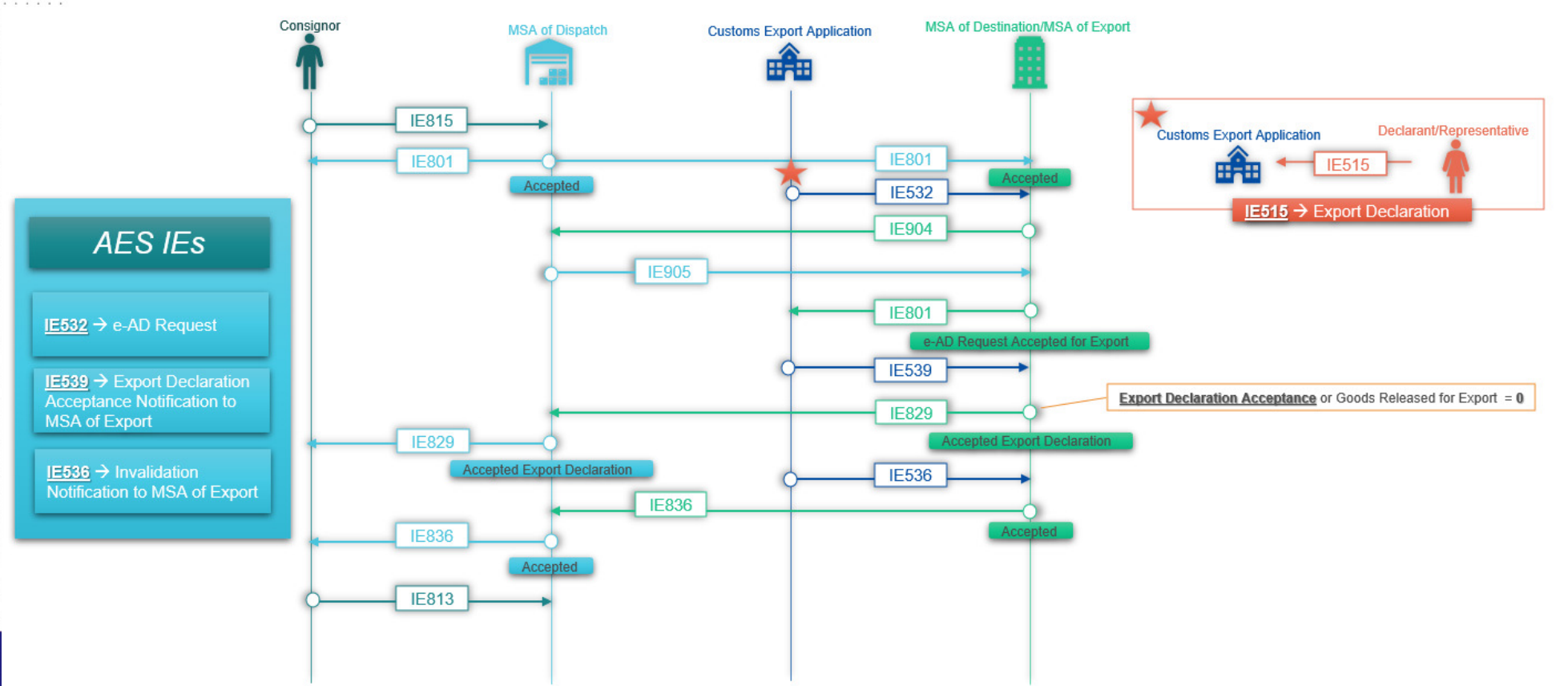






# EXPORT PROCEDURES – ALTERNATIVE SCENARIO

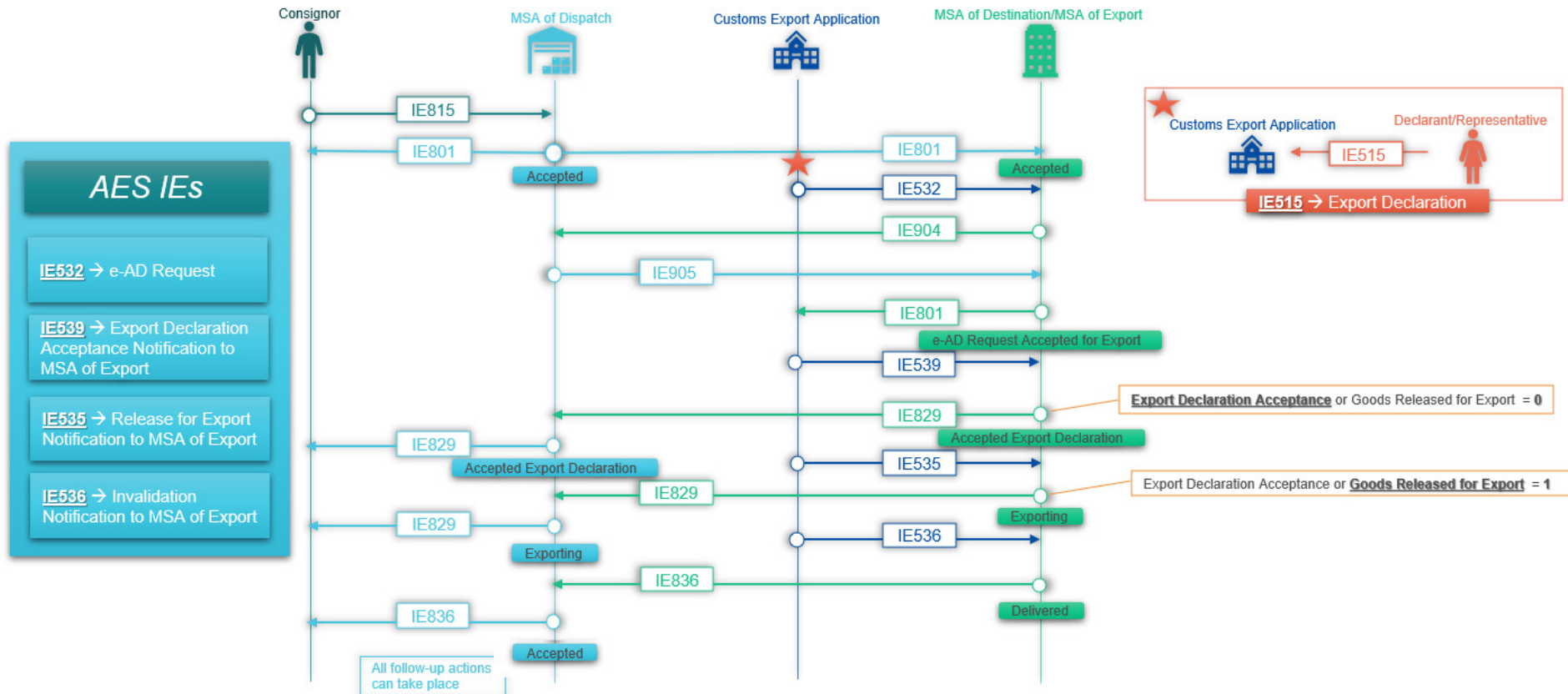
- Export Operation at Office of Export followed by Export Declaration Invalidation After Acceptance but Before Release, and Change of Destination (MSA of disp not = MSA of dest/exp)





# EXPORT PROCEDURES – ALTERNATIVE SCENARIO

- Export Operation at Office of Export followed by Export Declaration Invalidation After Acceptance and after Release, and Change of Destination (MSA of disp not = MSA of dest/exp)





Federal  
Public Service  
**FINANCE**



## OTHER CHANGES – NOT RELATED TO EXPORT



## OTHER CHANGE - NOT RELATED TO EXPORT

Addition of new data item in IE801 and IE815, for Independent Small Producers (ISP) declaration (1//2)

<u>Degree Plato</u>	D	n..5,2		C048 C152 R232
Fiscal Mark	O	an..350		
<u>Fiscal Mark LNG</u>	D	a2	BC12	C002
<u>Fiscal Mark Used flag</u>	O	n1	TC27	
<u>Designation of Origin</u>	O	an..350		
<u>Designation of Origin LNG</u>	D	a2	BC12	C002
Size of Producer	O	n..15		R232
Density	D	n..5,2		C049 R232
Commercial Description	O	an..350		
<u>Commercial Description LNG</u>	D	a2	BC12	C002
<u>Brand Name of Products</u>	O	an..350		
<u>Brand Name of Products LNG</u>	D	a2	BC12	C002
<u>Maturation Period or Age of Products</u>	O	an..350		
<u>Maturation Period or Age of Products LNG</u>	D	a2	BC12	C002
<u>Independent Small Producers Declaration</u>	O	an..350		
Independent Small Producers Declaration LNG	D	a2	BC12	C002



PLANNING : TESTS CAN BEGIN END OF NOVEMBER  
URL SIM – **TO BE COMPLETED**  
LINKS FOR DOCUMENTATION:

[HTTPS://FINANCIEN.BELGIUM.BE/NL/DOUANE\\_ACCIJNZEN/ONDERNEMINGEN/APPLICATIES-DA/TECHNISCHE-DOCUMENTATIE-0/EMCS#Q4](https://financien.belgium.be/nl/douane_accijnzen/ondernemingen/applicaties-da/technische-documentatie-0/emcs#q4)

[HTTPS://FINANCIEN.BELGIUM.BE/FR/DOUANES\\_ACCISES/ENTREPRISES/APPLICATIONS-DA/DOCUMENTATION-TECHNIQUE/EMCS#Q4](https://financien.belgium.be/fr/douanes_accises/entreprises/applications-da/documentation-technique/emcs#q4)





Federal  
Public Service  
**FINANCE**



ANY QUESTIONS?

[WWW.FIN.BELGIUM.BE](http://WWW.FIN.BELGIUM.BE)

CUSTOMS AND EXCISES • FEDERAL PUBLIC SERVICE FINANCE

.be



Federal  
Public Service  
**FINANCE**



THANK YOU

[WWW.FIN.BELGIUM.BE](http://WWW.FIN.BELGIUM.BE)

CUSTOMS AND EXCISES • FEDERAL PUBLIC SERVICE FINANCE

.be



Federal  
Public Service  
**FINANCE**

**CUSTOMS AND EXCISES**