

An aerial photograph of a large industrial facility, likely a Volvo manufacturing plant, featuring several large white buildings, extensive parking lots filled with cars, and a complex highway interchange with multiple overpasses. Three large white wind turbines are visible in the background, set against a backdrop of green fields and a clear sky. A semi-transparent blue square is overlaid in the center of the image, containing the Volvo logo and the text 'VOLVO GROUP'.

**VOLVO**  
VOLVO GROUP

**Welcome**

# OUR HISTORY

1927



**1999**

The image features a dark teal background with a vertical white line running through the center. A white circle is positioned at the intersection of the line, containing the year '2001' in a bold, dark teal font. Behind the line and circle, three trucks are faintly visible in a row. The truck on the left is a modern cab model with a 'Quon' badge on the front bumper. The middle truck is a conventional cab model with a prominent grille. The truck on the right is another conventional cab model with a different grille design.

**2001**



**2012**



**THE VOLVO  
GROUP  
DIRECTION**

**100.000**

EMPLOYEES

PRODUCTION  
FACILITIES IN

**18**

COUNTRIES

**190**

MARKETS



**VOLVO**  
VOLVO GROUP

# SERVICE MARKET LOGISTICS





Every second  
**24/7**  
Every day

**Service Market Logistics**  
SERVING ALL VOLVO GROUP BRANDS



**VOLVO**  
VOLVO GROUP



**“MY WHOLE BUSINESS IS BASED AROUND MY TRUCKS. THEY REALLY NEED TO WORK 24/7”**

**VOLVO**  
VOLVO GROUP

# Volvo Group Belgium - Site Gent





# Regionaal Douaneforum

2019-03-08

# CDC Gent Operations

- **800 employees**  
722 IW, 76 OW
- **273.000** part numbers on stock
- **8.500.000** order lines/year
- **130.000m<sup>2</sup>** warehouse space
- **460** rolling equipment
- **5.500** suppliers
- **75** Incoming transports/day
- **15** Outgoing containers/day
- **65** Outgoing transports/day
- **2.500** delivery points
- **2** shifts, Saturday, **24h** OC



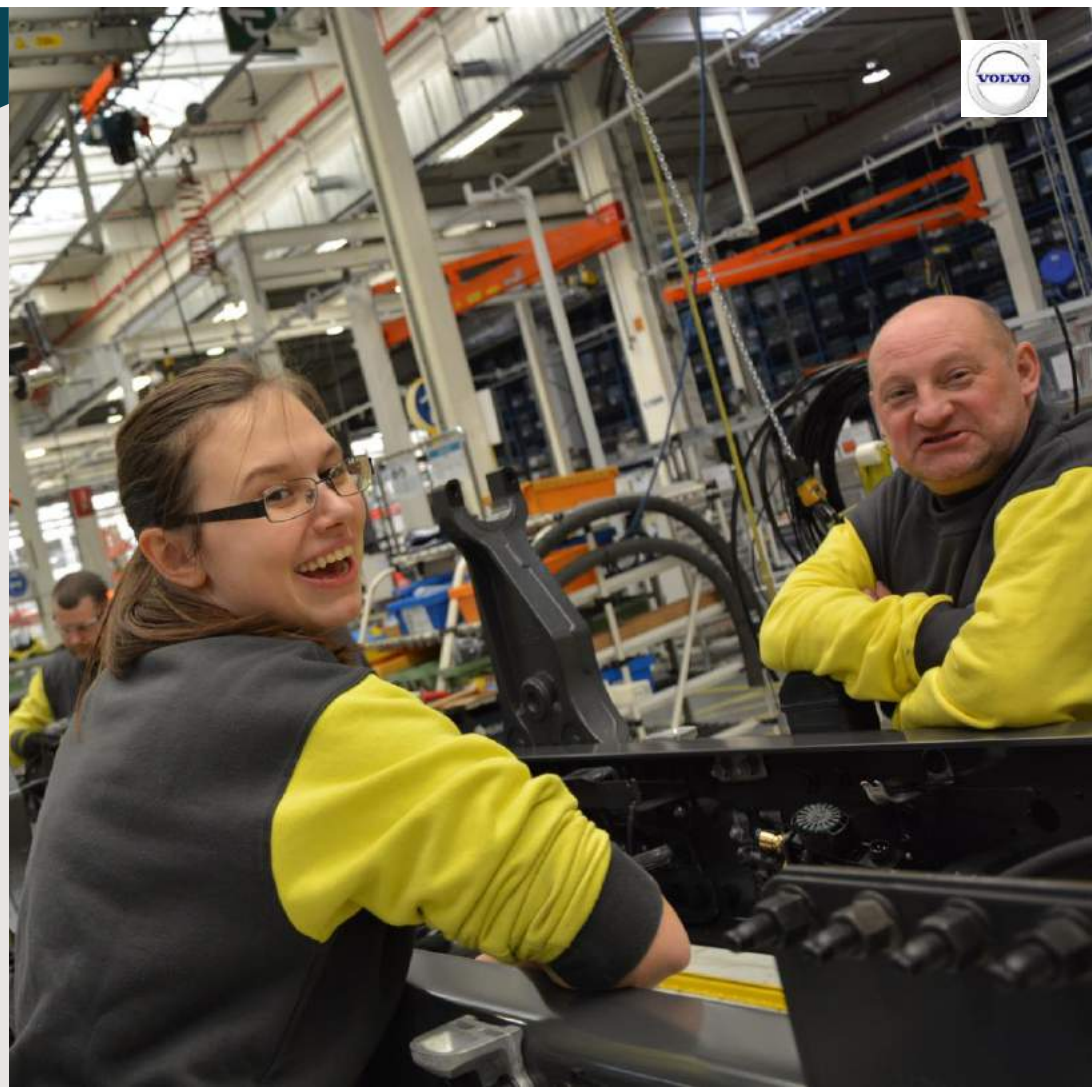
# GHENT PLANT



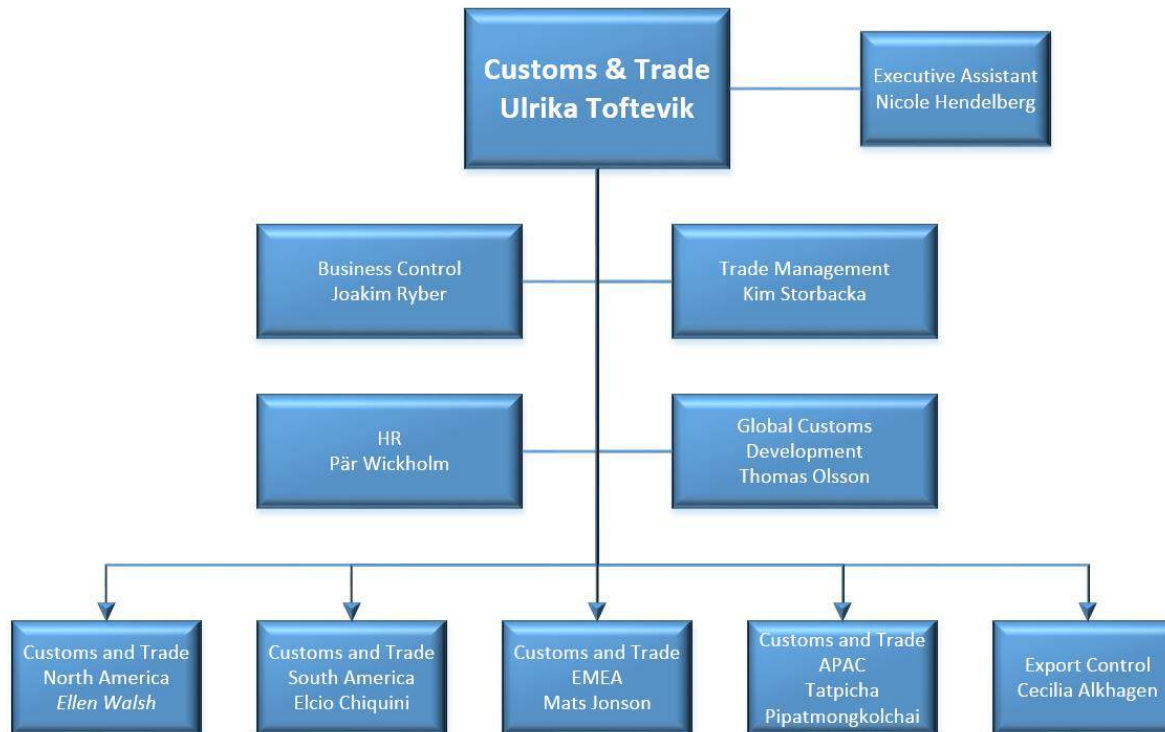
**42K**  
TRUCKS 2018

**2700**  
EMPLOYEES

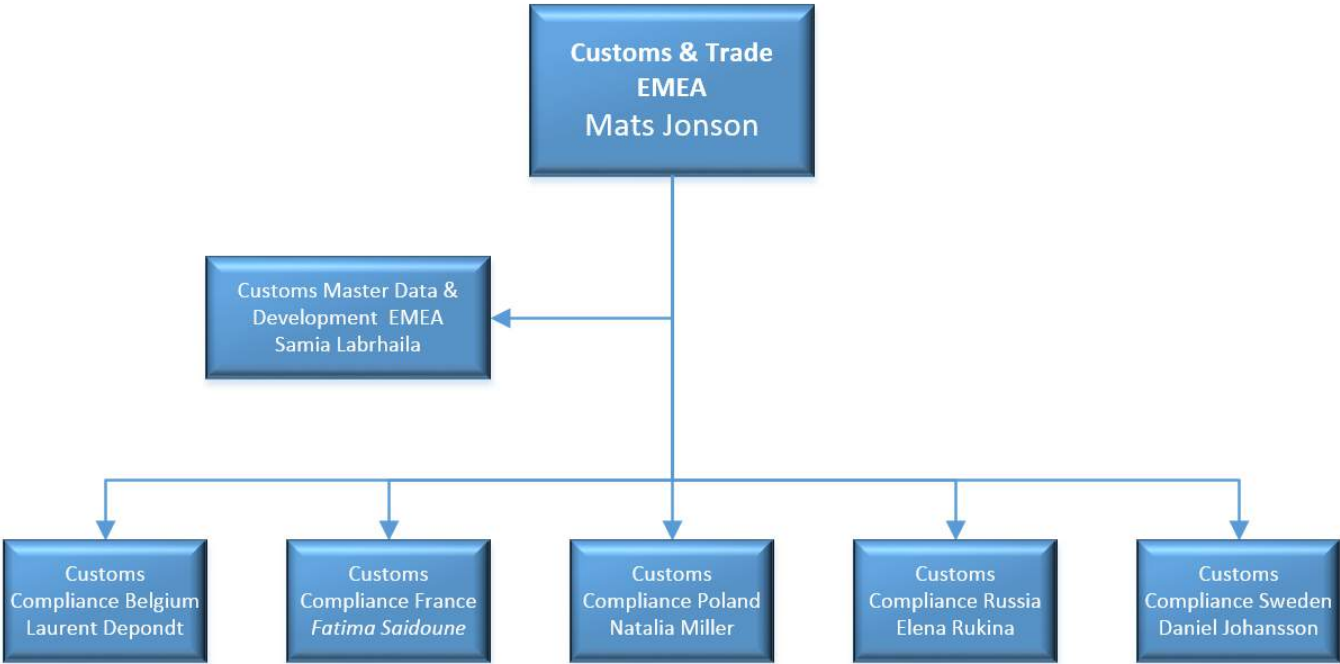
<b>Capacity</b>	59 400 trucks/ year
<b>Product range</b>	Complete European Volvo range of HD trucks
<b>Key processes</b>	Assembling trucks, fitting tires, trimming cabs



# Customs & Trade - Global



# Customs & Trade - EMEA



Customs & Trade Belgium, Pieter Duchi





# Customs & Trade - Certificates

❖ AEO F (sinds 2011)



❖ Known Co



# Customs & Trade – Customs Licenses

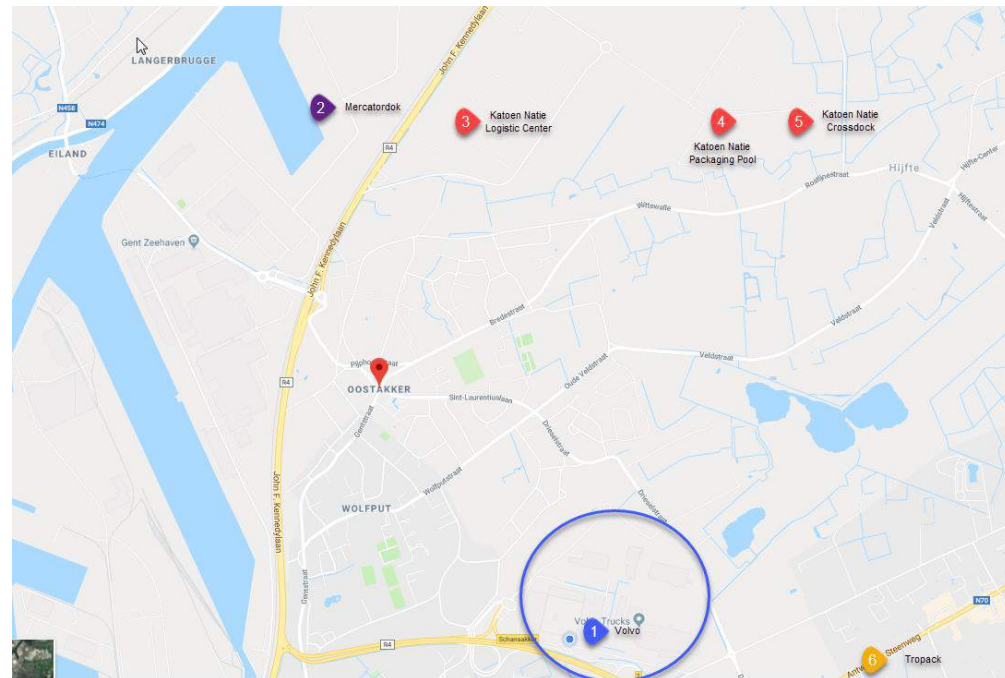
- ❖ Toegelaten geadresseerde (NCTS)
- ❖ Toegelaten afzender (NCTS)
- ❖ Vergunning inschrijving in de administratie van de aangever zonder kennisgeving/met globalisatie (EiDR)
- ❖ Goedgekeurde plaats voor lading (LP)
- ❖ Toegelaten afgever voor het bewijs van de douanestatus van uniegoederen (T2L)
- ❖ Ruimte Tijdelijke Opslag

# Customs & Trade – Customs Licenses

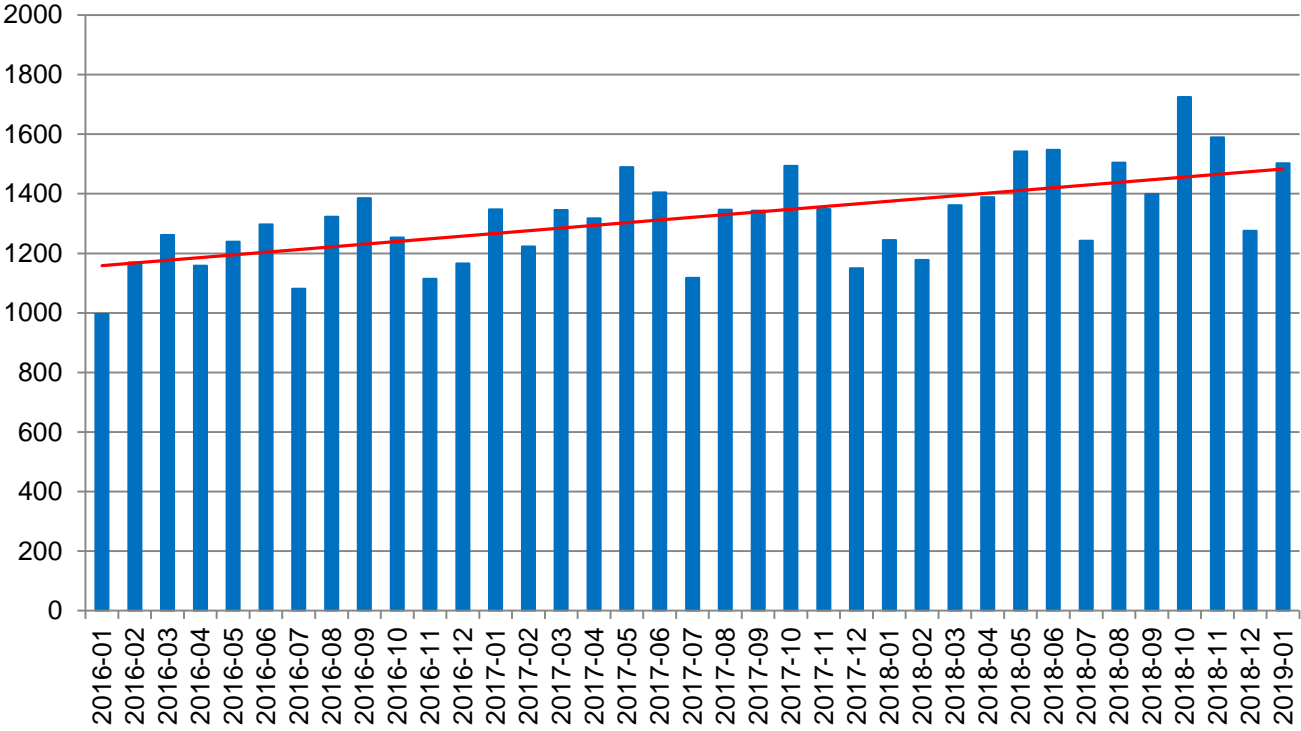
- ❖ Vereenvoudigde noodprocedures PLDA – buffering
- ❖ Afdrukken van douaneaangiftes op blanco papier (PLDA)
- ❖ Diverse waardebeslissingen (oa. Reman flows)
- ❖ Bijzondere Bestemming
- ❖ BTI & Schorsingen

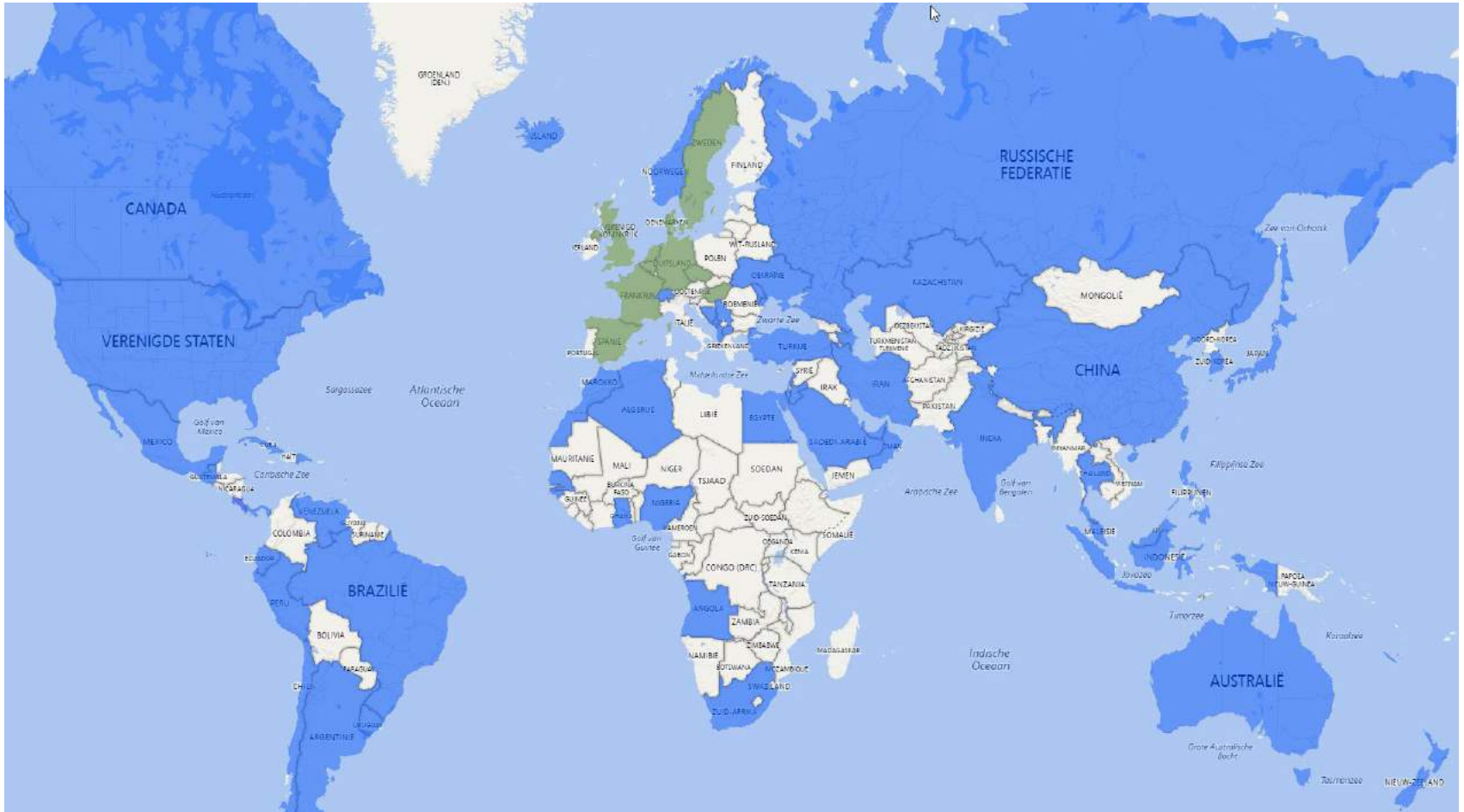
# Customs & Trade - Operations

1. Volvo site  
Service Market Logistics  
Production Logistics
2. Mercatordok  
Cab flow  
Shortsea flow BE-SE
3. Katoen Natie Logistic Center  
Bonded Warehouse
4. Katoen Natie Packaging Pool  
Emballage flow
5. Katoen Natie Crossdock  
All crossdock activities  
> EU and Overseas destinations
6. Tropack  
Return – Reman - Repack



# Customs & Trade – Inhouse Import declarations





**Volvo Group Trucks Operations**

Customs & Trade Belgium, Pieter Duchi



# Customs & Trade – Inhouse Export Declarations

