



Federal
Public Service
FINANCE

NCTS PHASE 5



WWW.FIN.BELGIUM.BE

CUSTOMS AND EXCISES • FEDERAL PUBLIC SERVICE FINANCE

.be

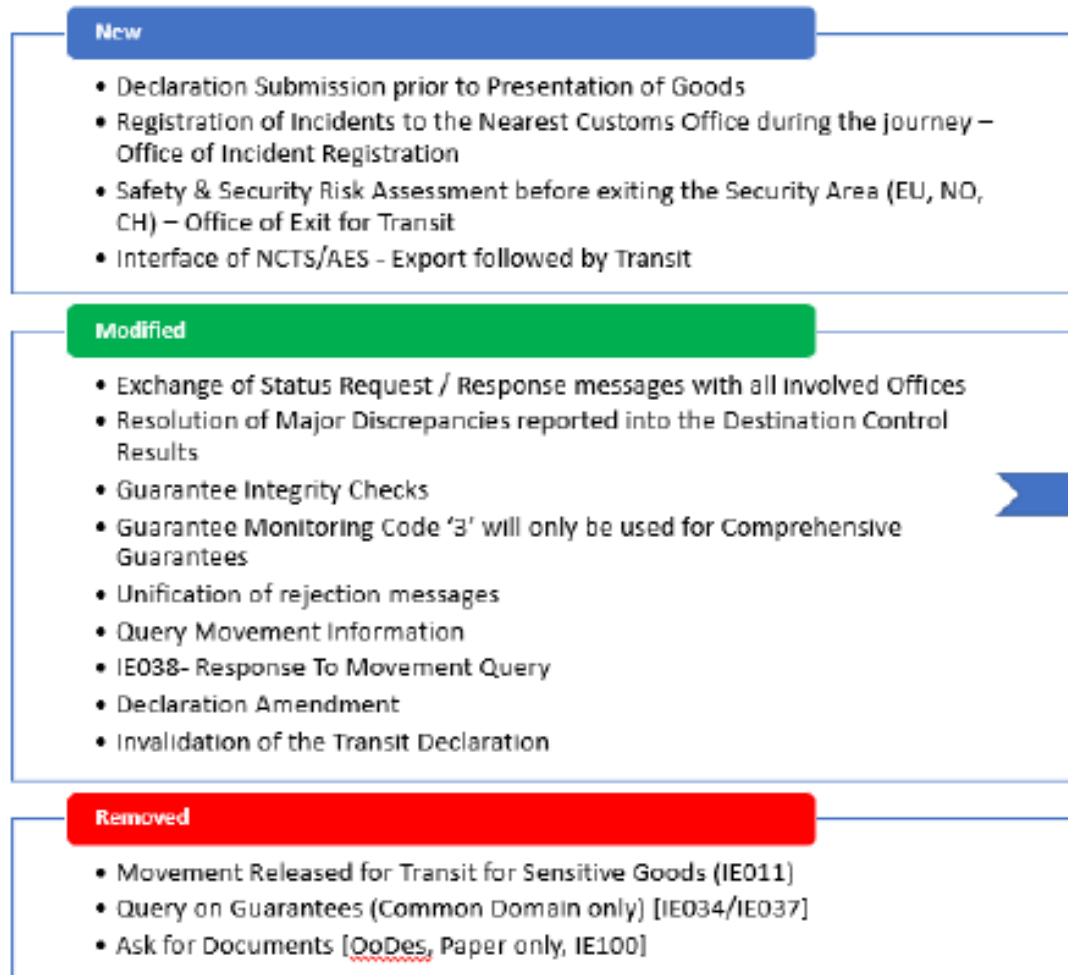


NCTS (NEW COMPUTERISED TRANSIT SYSTEM)

- **NCTS**
is the application that manages the transit declarations, this on the basis of electronic message exchange. This exchange of messages is between different parties:
 - Between economic operators and customs (external domain)
 - Between customs offices of 1 country (national domain)
 - Between customs offices of different countries (common domain)
- **Union transit :**
 - External transit: T1
External transit makes it possible to transfer non-union goods from one place inside the customs territory of the union with suspension of customs duties and other taxes, such as VAT and excise duties
 - Internal transit: T2
With the procedure internal transit an economic operator can temporary leave the customs territory of the Union and come back while maintaining the Union status of the goods.
- **Common transit:**
 - Transit between the customs territory of the Union and the other contracting transit countries and also transit between other parties of the contracting transit countries.
 - The Contracting Transit countries (CTC) are: the European Union, Iceland, Switzerland, Liechtenstein, Norway, United Kingdom, Turkey, the former Yugoslav republic of Macedonia and Serbia,



PHASE 4 TO PHASE 5 – IMPACT ON BUSINESS PROCESSES



Office Role	Impact
Office of Departure (until movement release)	Major
Office of Departure (after movement release)	Minor
Office of Departure (recovery states)	Minor
Office of Destination (without Recovery States)	Minor
Office of Exit for Transit	New
Office of Incident Registration	New

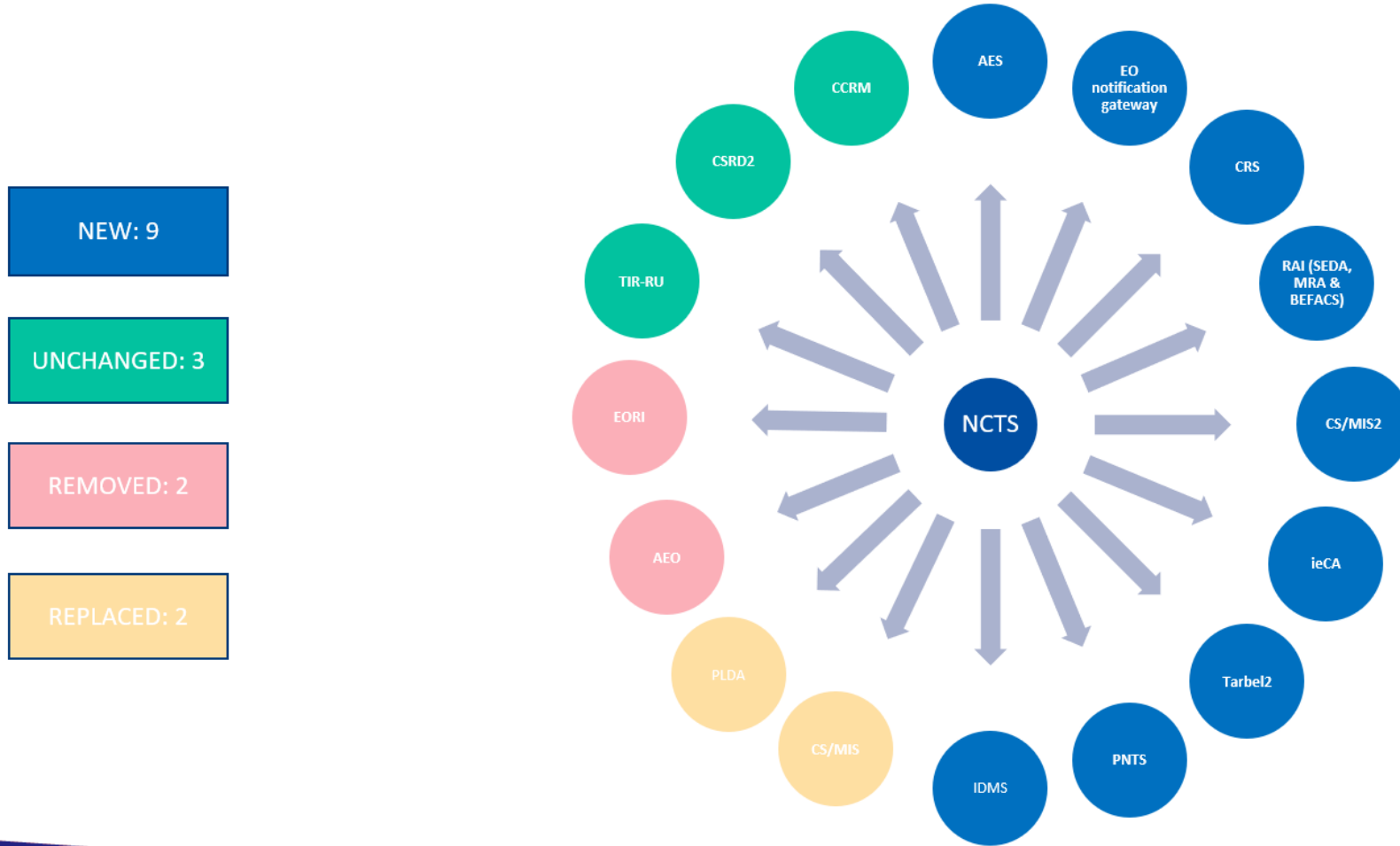


NCTS P5 ACTORS

Role Type	Role Name	Organization
OoDep	Customs Office of Departure	Customs Office
OoGua	Customs Office of Guarantee	Customs Office
<u>OoExtTra</u>	Customs Office of Exit for Transit	Customs Office
OoTra	Customs Office of Transit	Customs Office
OoDes	Customs Office of Destination	Customs Office
OoIncReg	Customs Office of Incident Registration	Customs Office
Holder	Holder of the Transit Procedure	Trader
TraDes	Trader at Destination	Trader

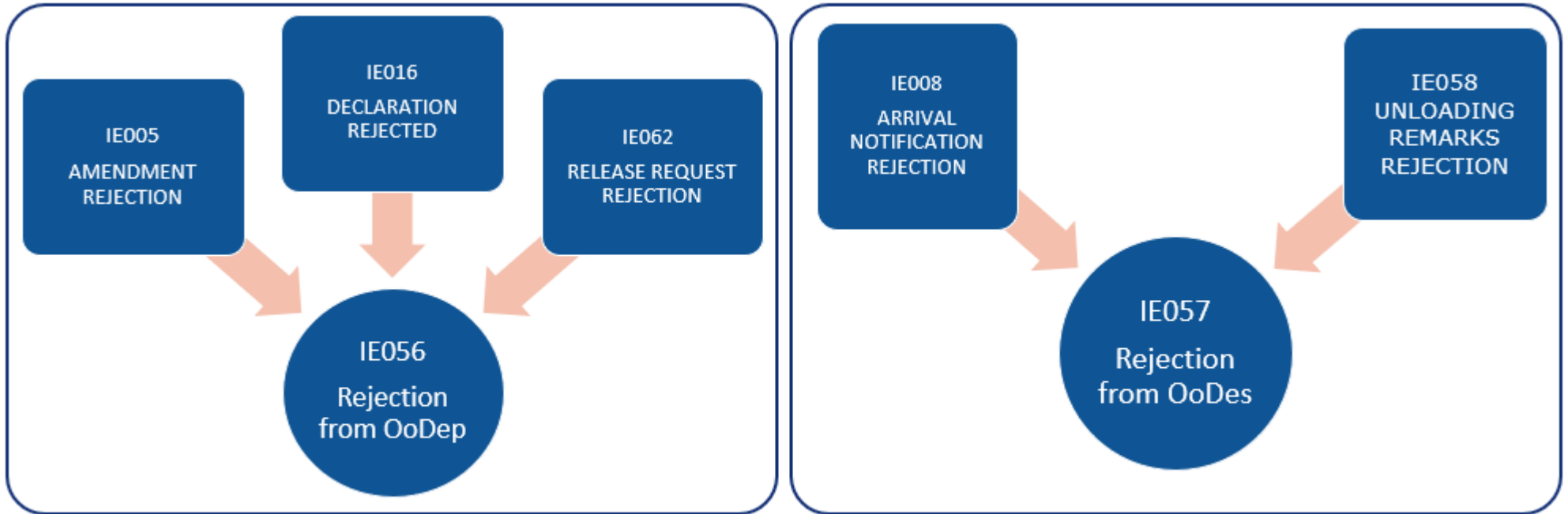


INTERACTION WITH NEW SYSTEMS





UNIFICATION OF REJECTION MESSAGES





MESSAGES SEND FROM ECONOMIC OPERATOR

- To Office Of Departure

From the holder of the Transit procedure	
IE013	DECLARATION AMENDMENT
IE014	DECLARATION INVALIDATION REQUEST
IE015	DECLARATION DATA
IE054	REQUEST OF RELEASE
IE170	PRESENTATION NOTIFICATION FOR THE PRE- LODGED DECLARATION

- To Office of Destination

From Trader at Destination	
IE007	ARRIVAL NOTIFICATION
IE044	UNLOADING REMARKS



MESSAGES RECEIVED BY ECONOMIC OPERATOR

- From Office of Departure

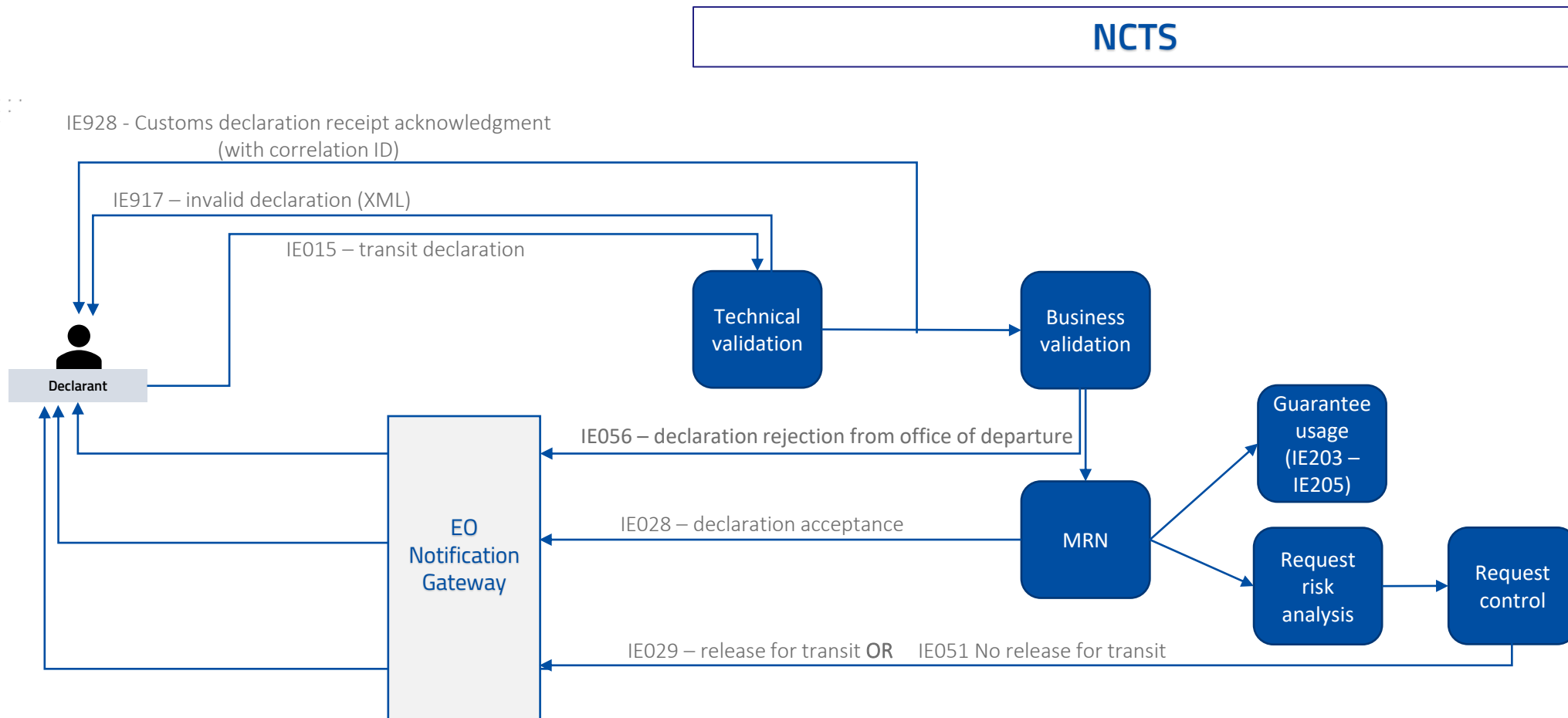
To the holder of the Transit Procedure	
IE004	AMENDMENT ACCEPTANCE
IE056	REJECTION FROM OFFICE OF DEPARTURE
IE009	INVALIDATION DECISION
IE055	GUARANTEE NOT VALID
IE019	DISCREPANCIES
IE928	POSITIVE ACKNOWLEDGE
IE022	NOTIFICATION TO AMEND DECLARATION
IE028	MRN ALLOCATED
IE029	RELEASE FOR TRANSIT
IE045	WRITE-OFF NOTIFICATION
IE051	NO RELEASE FOR TRANSIT
IE060	CONTROL DECISION NOTIFICATION
IE182	FORWARDED INCIDENT NOTIFICATION TO ED
IE176	PRESENTATION NOTIFICATION REJECTION FOR THE PRE-LODGED DECLARATION

- From Office of Destination

To Trader at Destination	
IE057	REJECTION FROM OFFICE OF DESTINATION
IE025	GOODS RELEASE NOTIFICATION
IE043	UNLOADING PERMISSION

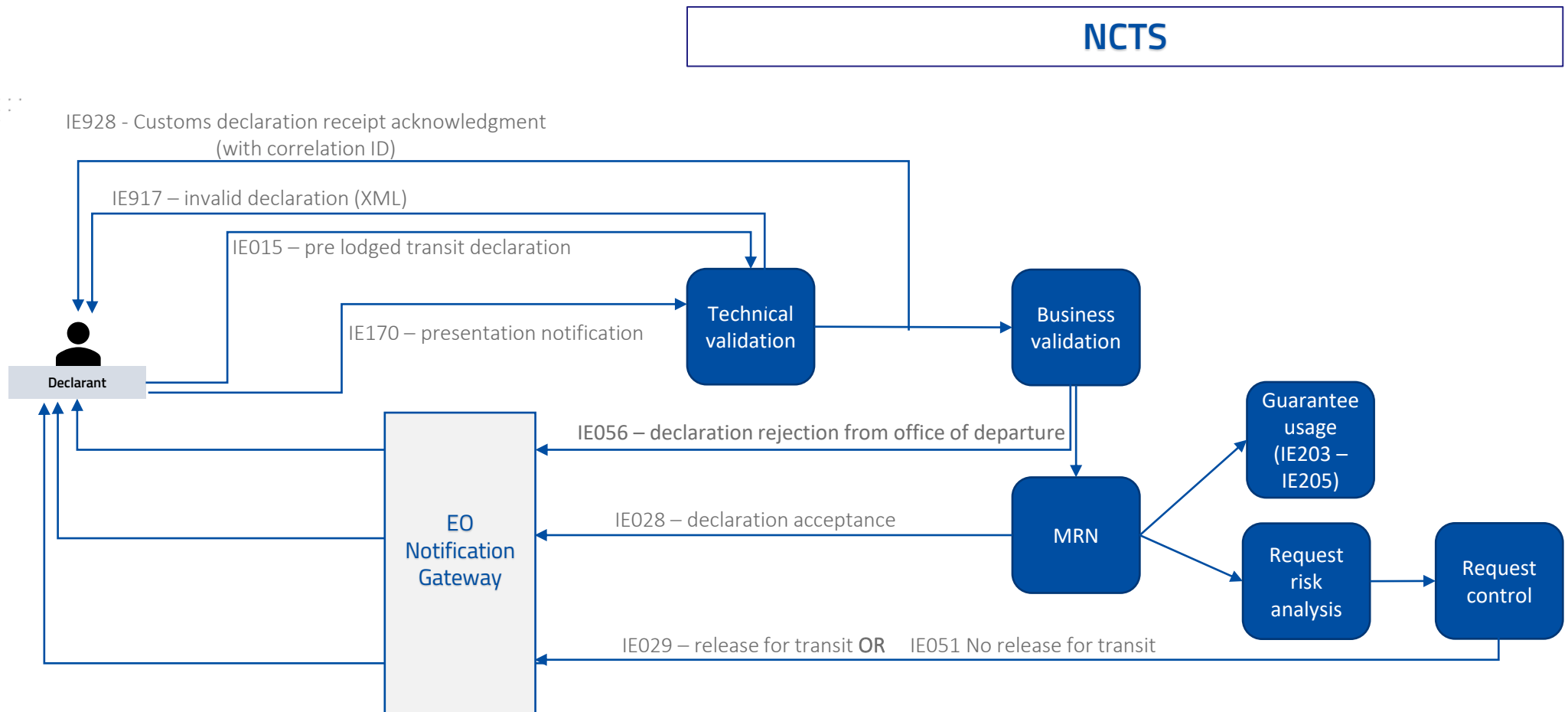


CORE FLOW NCTS DEPARTURE



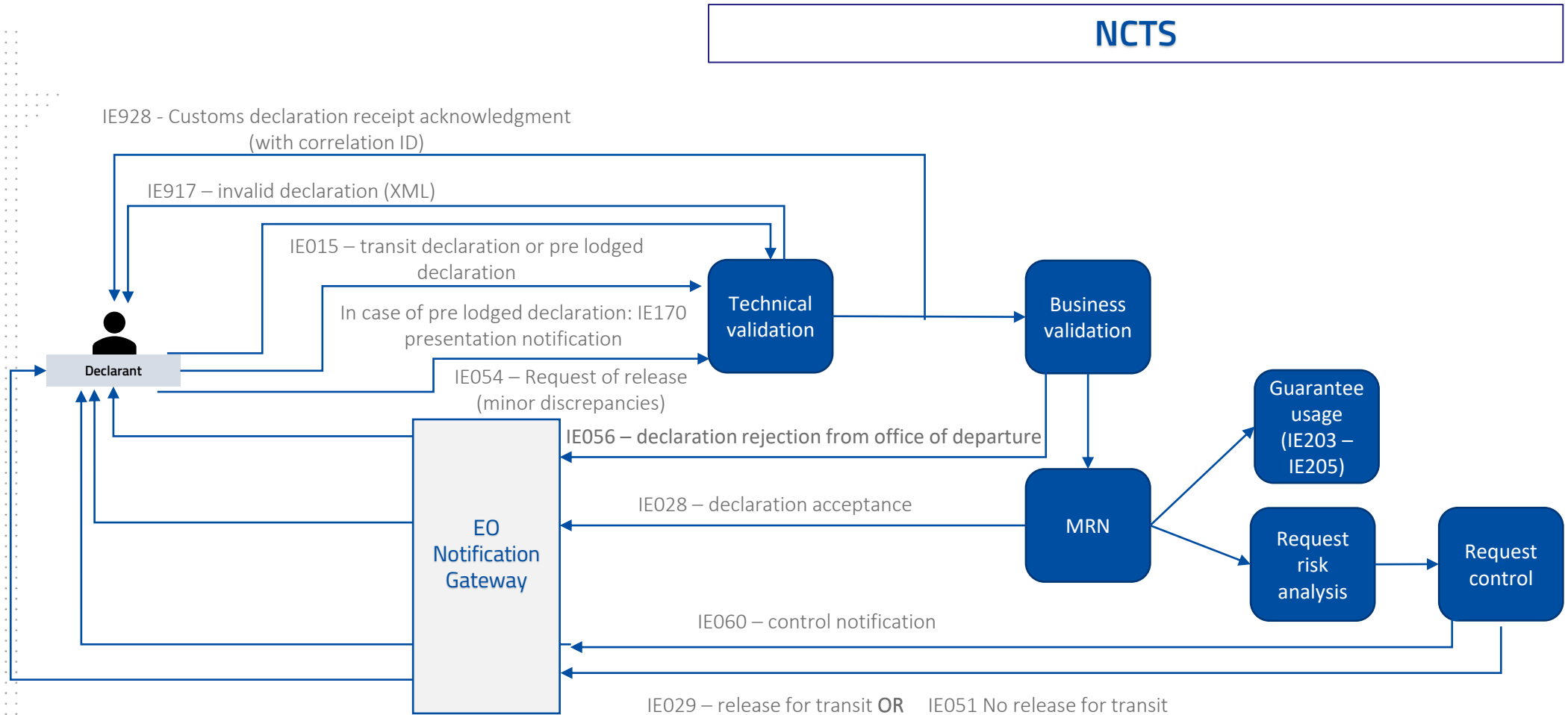


PRE LODGED FLOW NCTS DEPARTURE



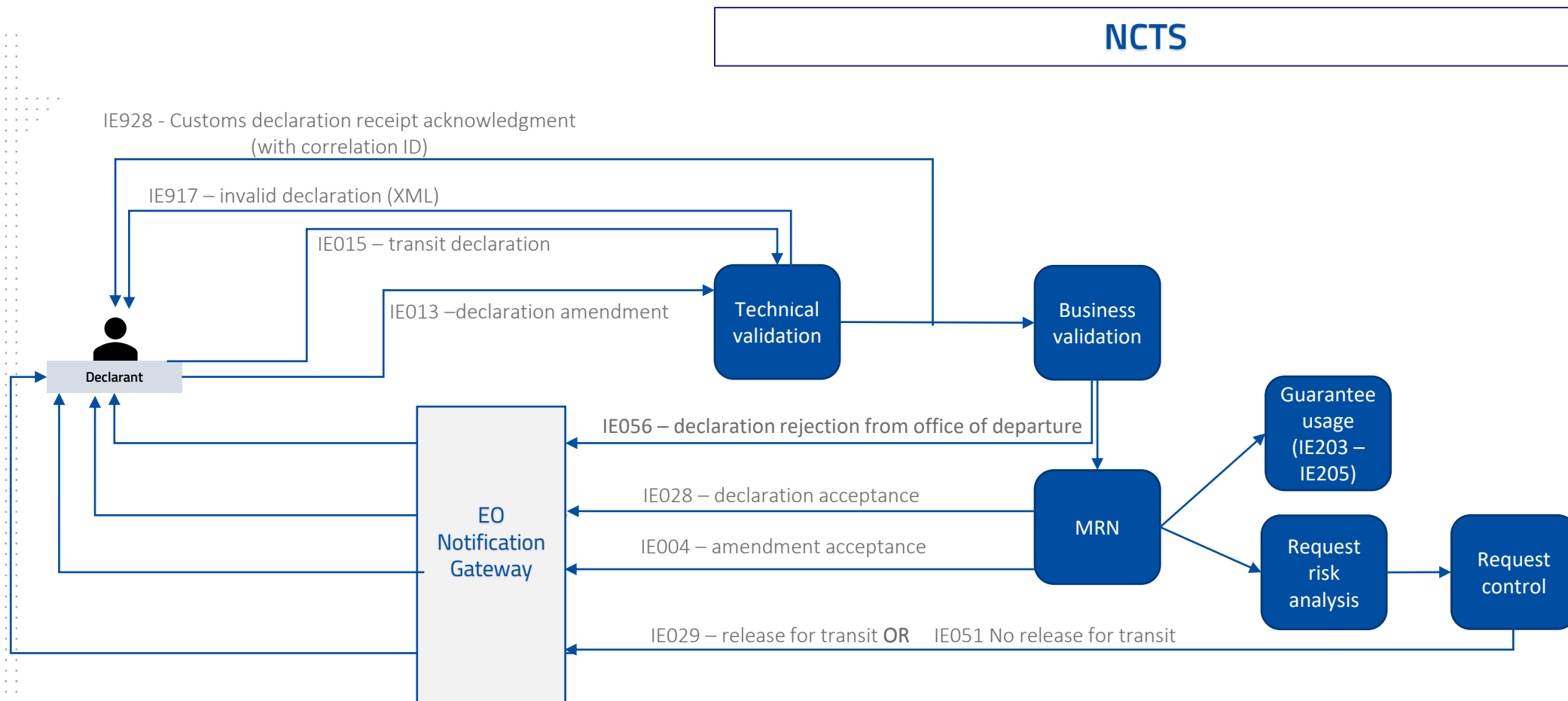


FLOW NCTS DEPARTURE IN CASE OF CONTROL



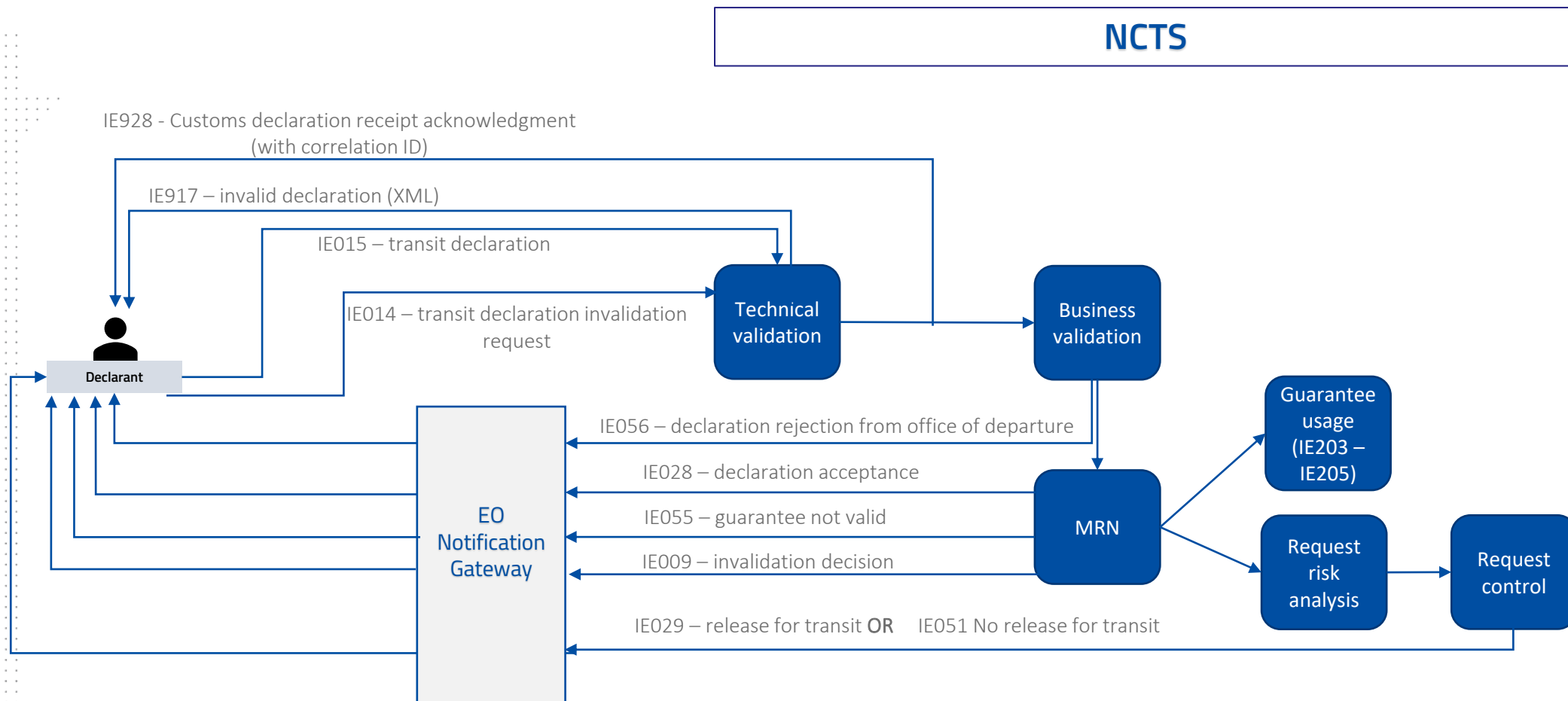


AMENDMENT FLOW NCTS DEPARTURE





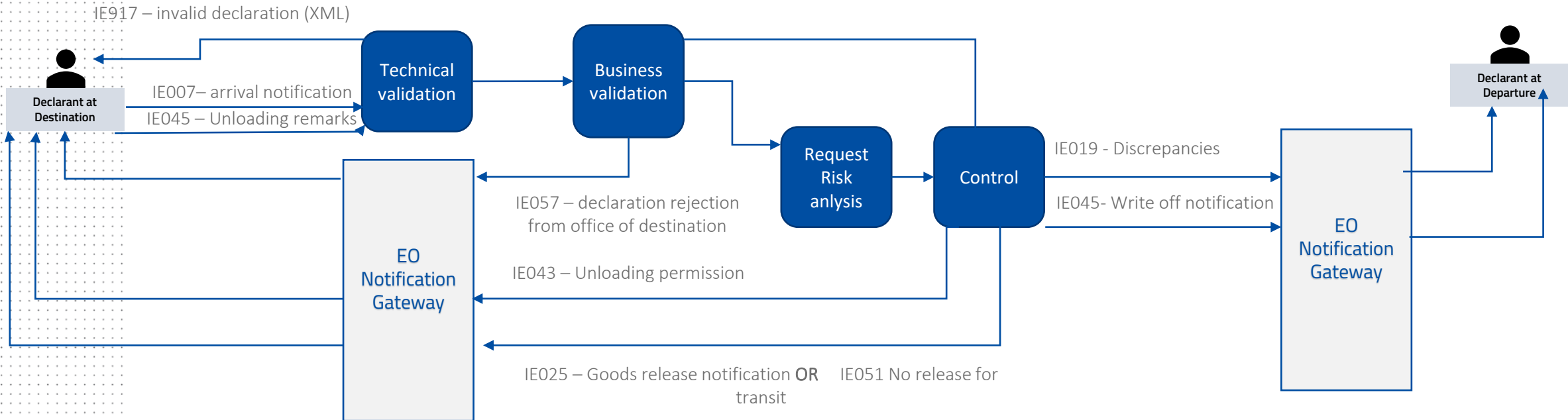
INVALIDATION FLOW NCTS DEPARTMENT





FLOW ARRIVAL AT DESTINATION

NCTS





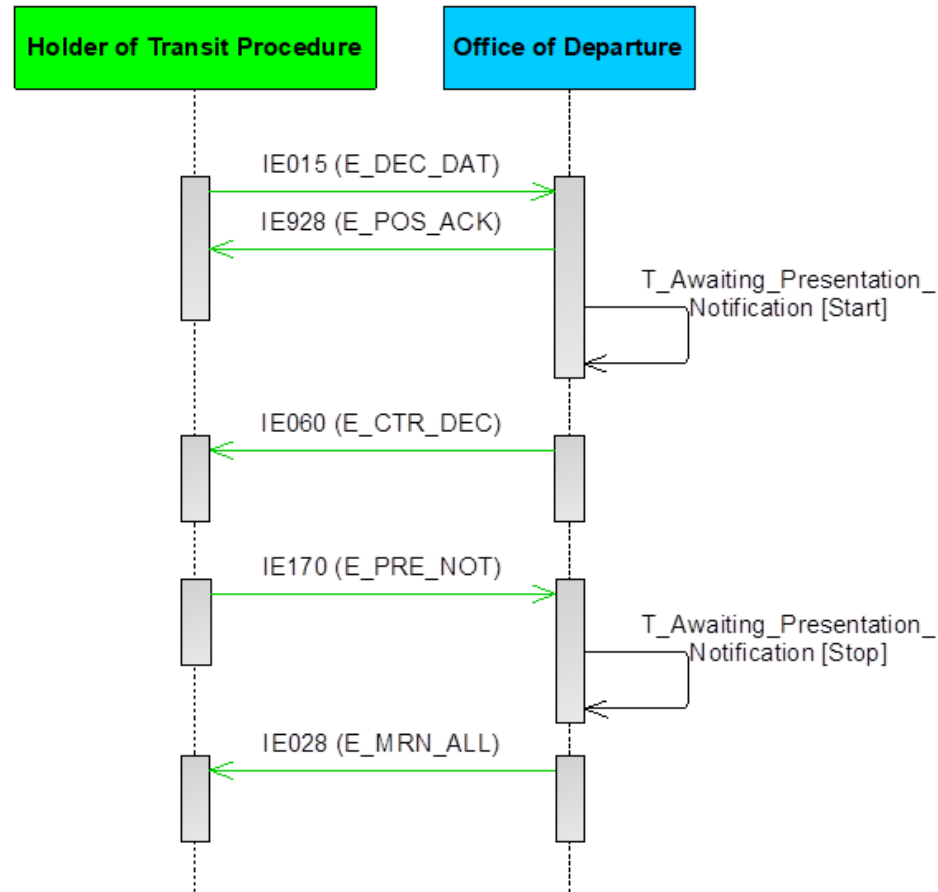
NEW PROCESSES

- The following new processes are **implemented** NCTS-P5:
 - Declaration Submission prior to Presentation of Goods
 - Registration of Incidents to the Nearest Customs Office during the course of the journey – Office of Incident Registration
 - Safety & Security Risk Assessment before exiting the Security Area (EU, NO, CH) – Office of Exit for Transit
 - Interface of NCTS/AES - Export followed by Transit



DECLARATION SUBMISSION PRIOR TO PRESENTATION OF GOODS

- The customs declaration can be lodged for the purpose of risk analysis thirty (30) days prior to the presentation of the goods to the Office of Departure (i.e. the value of the 'Additional Declaration Type' is equal to "D" in the 'Declaration Data' E_DEC_DAT (IE015) message).





NEW OFFICE ROLE: OFFICE OF INCIDENT REGISTRATION

During the movement of goods under the Union or common transit procedure, incidents En-Route can happen:

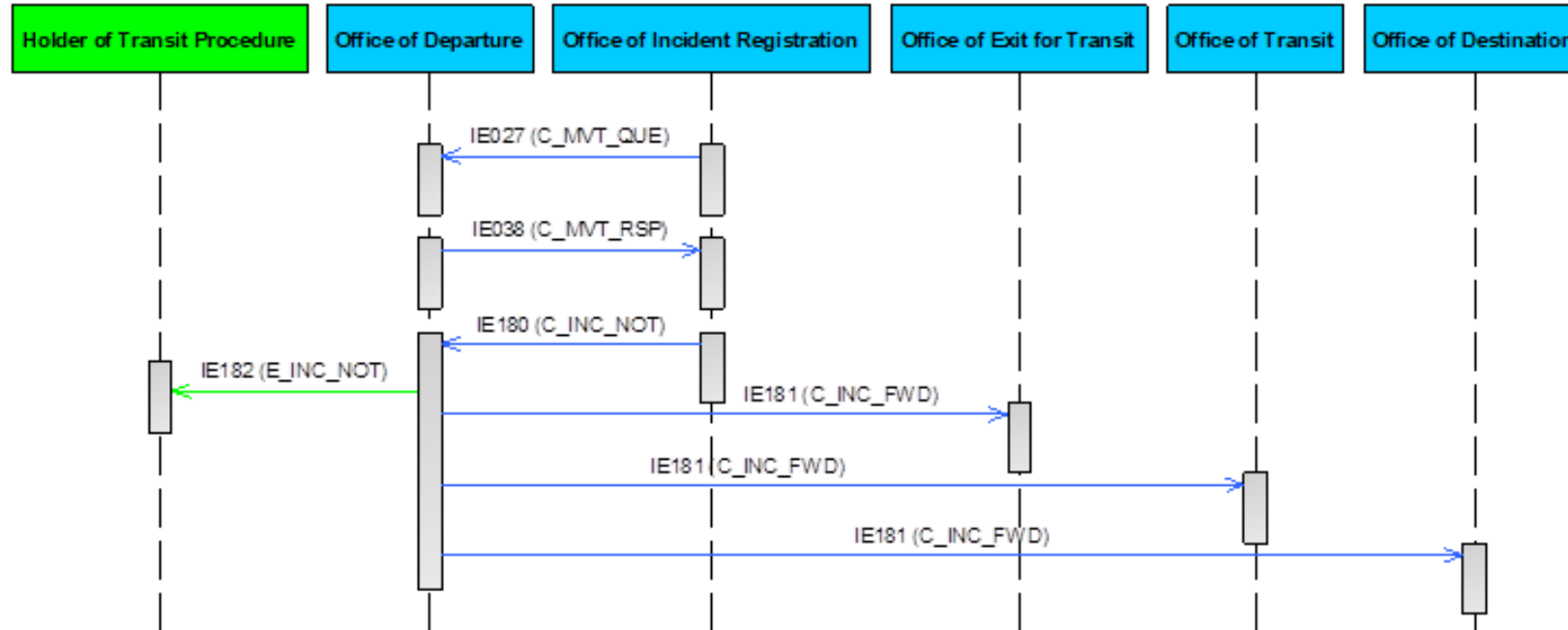
- the carrier is obliged to deviate from the prescribed itinerary due to circumstances beyond their control;
- seals are broken or tampered during transportation for reasons beyond the carrier's control;
- goods are transferred from one means of transport to another;
- imminent danger necessitates immediate partial or total unloading of the sealed means of transport;
- an event occurs which may affect the ability of the Holder of the Transit Procedure or the carrier to comply with their obligations;
- etc.

Without any undue delay after the incident, the carrier presents the goods together with the MRN of the transit declaration to the nearest customs Office of the National Administration in whose territory the means of transport is located at that time. This customs Office is named the Office of Incident Registration.





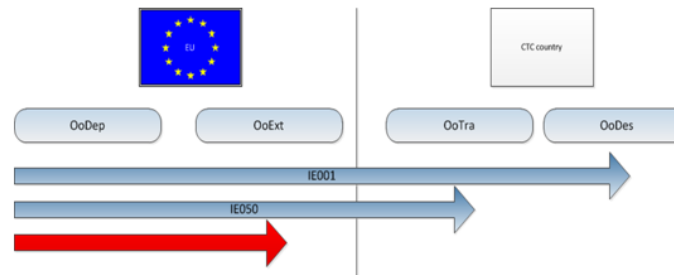
REGISTRATION OF INCIDENTS TO THE NEAREST CUSTOMS OFFICE DURING THE COURSE OF THE JOURNEY – OFFICE OF INCIDENT REGISTRATION





NEW OFFICE ROLE: OFFICE OF EXIT FOR TRANSIT

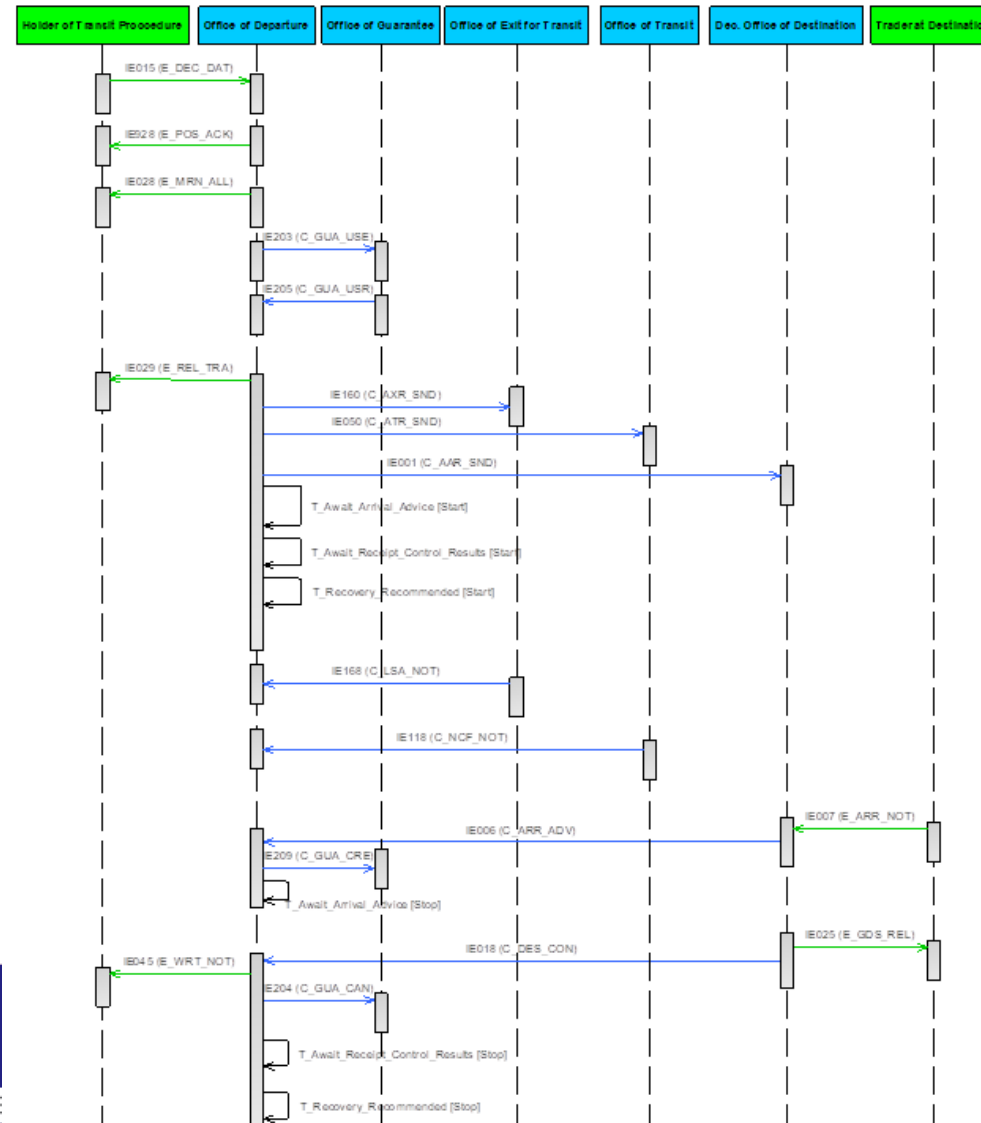
- Security Area = EU + Switzerland and Norway
- Non-union goods leaving safety and security area to a CTC country other than Norway or Switzerland, for example: Goods from Belgium to Ireland via United Kingdom



- If the transit declaration is also used for the purpose of safety and security, the Office of Departure notifies the Office of Exit for Transit with the 'Anticipated Exit For Transit Record' C_AXR_SND (IE160) message containing the transit declaration data along with EXS particulars, and risk analysis results (i.e. risk results are sent only when the Office of Departure belongs to the Security Area).



SAFETY & SECURITY RISK ASSESSMENT BEFORE EXITING THE SECURITY AREA (EU, NO, CH) – OFFICE OF EXIT FOR TRANSIT





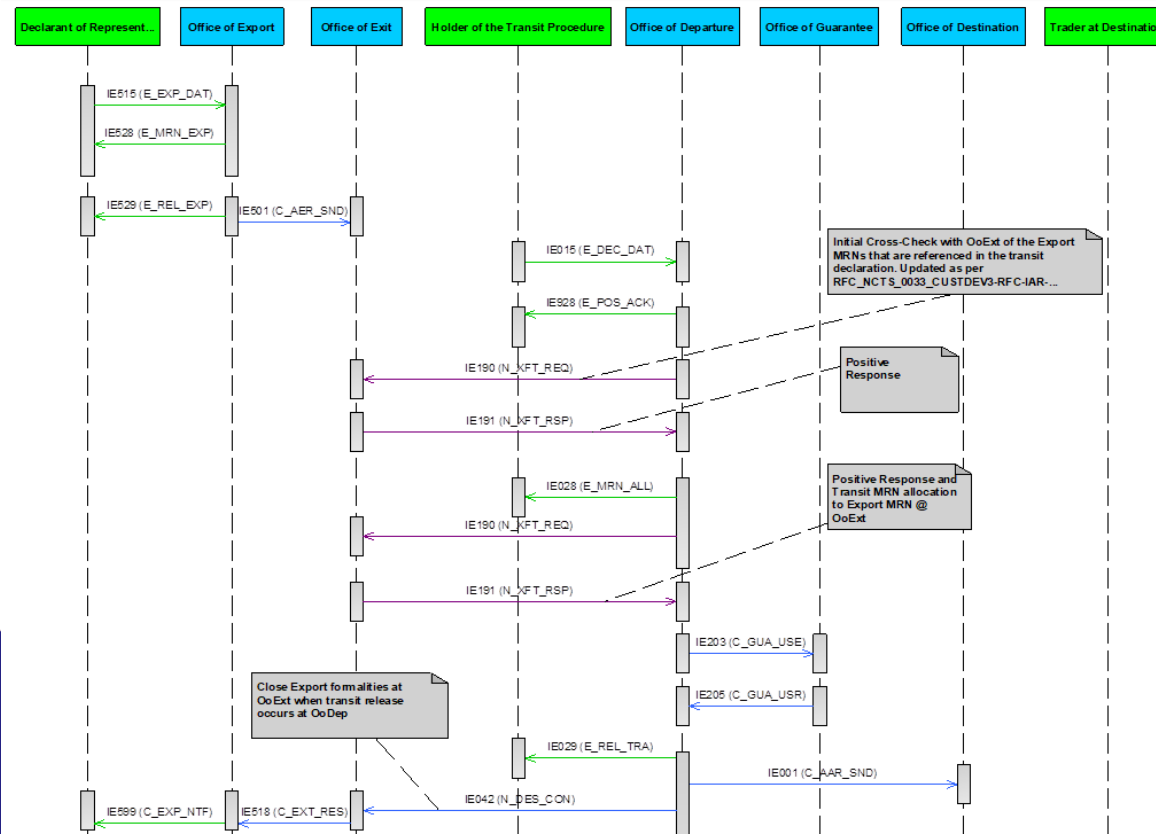
INTERFACE OF NCTS/AES - EXPORT FOLLOWED BY TRANSIT – PART 1

- There are cases when transit has export as previous procedure. In that case, NCTS needs to interface with AES:
 - When the goods are released for export and then the external transit procedure follows, the customs Office of exit shall be the customs Office of departure of the transit operation (UCC IA Article 329);
 - In case of internal transit, the customs Office of exit shall be the customs Office of departure and the Office of Destination is situated either:
 - in a common transit country (UCC IA Article 329), or
 - at the border of the customs territory of the Union and the goods are taken out of that customs territory, after having passed through a country or territory outside the customs territory of Union (UCC IA Article 329).



INTERFACE OF NCTS/AES - EXPORT FOLLOWED BY TRANSIT – PART 2

- When external transit follows export, NCTS notifies AES with the 'Destination Control Results to AES' N_DES_CON (IE042) message at the time the movement is released for transit. When AES receives this message, the exit control results are directly communicated to the Office of Export with the 'Exit Results' C_EXT_RES (IE518) message and that finalizes the export movement. However, even though any further interaction with AES is finished, the transit procedure continues until the 'Destination Control Results' C_DES_CON (IE018) message is sent to the Office of Departure from the Office of Destination.





PHASED OUT PROCESSES

- Movement Released for Transit for Sensitive Goods (IE011)
- Ask for Documents [OoDes, Paper only, IE100]
- Query on guarantees IE034-IE037 removed for common domain only



MIG FINAL

- Information can change once a year (change release management from European Commission)
[NCTS P5 | FOD Financiën \(belgium.be\)](#)
- Last updates published on 18/08/2021
- Minor national changes can be published more often (like implementation of a national rule)

NOODPROCEDURES D&A BEPERKING- EN VERBODSMAATREGELLEN NOMENCLATUUR & TARIEF DOUANEVERTEGENWOORDIGER HET NATIONAAL FORUM

> Home / Douane en Accijnzen / Ondernemingen / Applicaties D&A / Technische documentatie / NCTS / NCTS P5

📄 f t in

ONZE INFOCENTERS EN KANTOREN ZIJN TIJDELIJK GESLOTEN VOOR HET PUBLIEK. U KUNT DE GROTE MEERDERHEID VAN UW ADMINISTRatieve ZAKEN ONLINE OF PER TELEFOON REGELEN.

CORONA - INFORMATIE EN MAATREGELLEN

- > NIEUWS
- > BREXIT
- > DOUANE
- > ACCIJNZEN
- > FINANCIËN
- > APPLICATIES D&A
 - > E705
 - > Registratie en configuratie
 - > Releases
 - > Technische documentatie
 - > Algemene B2B webservice informatie
 - > NCTS

NCTS P5

Hieronder vindt u de specificaties terug voor NCTS fase 5.

Hou er wel rekening mee dat deze de komende maanden nog gering kunnen wijzigen.

Laatste bijwerking op 07.07.21 :

- [Part 1 \(ZIP, 20.41 MB\)](#)
- [Part 2 \(ZIP, 26.7 MB\)](#)
- [Part 3 \(ZIP, 12.67 MB\)](#)

Vorige bijwerkingen :

- [update 07.07.21 \(ZIP, 35.24 MB\)](#)
- [update 11.01.2021 \(ZIP, 20.63 MB\)](#)



DATA MAPPING

- Data mapping NCTS P5-NCTS P4 is published on internet ([NCTS P5 | FOD Financiën \(belgium.be\)](https://www.fodfinancien.be))

IEs ID	Upgrade	Downgrade	Level	NCTS P5	NCTS P5	NCTS P5	NCTS P5	NCTS P4	NCTS P4	NCTS P4
IE015	Pass	N/A	1	TRANSIT OPERATION		IE015.TRANSIT OPERATION	TRANSIT OPERATION	MESSAGE - HEADER		MESSAGE - HEADER
IE015	Pass	N/A	1	TRANSIT OPERATION	LRN	IE015.TRANSIT OPERATION.LRN	TRANSIT OPERATION_LRN	MESSAGE - HEADER	Reference number	MESSAGE-HEADER.Reference number
IE015	Pass	N/A	1	TRANSIT OPERATION	Declaration type	IE015.TRANSIT OPERATION.Declaration type	TRANSIT OPERATION_Declaration type	MESSAGE - HEADER	Type of declaration	MESSAGE - HEADER.Type of declaration
IE015	Pass	N/A	1	TRANSIT OPERATION	Additional declaration type	IE015.TRANSIT OPERATION.Additional declaration type	TRANSIT OPERATION_Additional declaration type	x	x	x.x
										MESSAGE -



TRANSITIE PERIOD – PARALLEL RUN

Fase 4



Transitie



Fase 5



Only for open
movements phase
4

From start of TP
use of NCTS P5 for
new movements



HIGH LEVEL PLANNING

- Will be communicated as soon as possible



TESTING

- End to End testing foreseen date to be confirmed from when this would be possible



NEWSFLASH

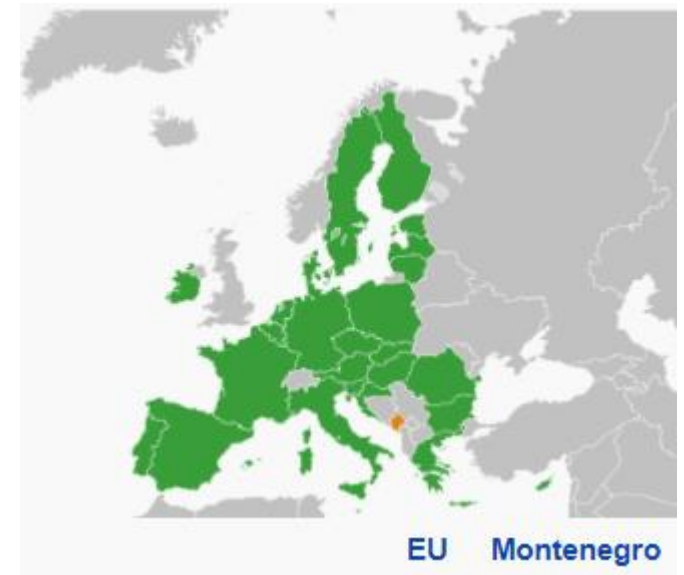
- Ukraine (UA) – one of the countries covered by the Eastern Partnership Initiative - is expected to join the Convention of the common transit procedure on 01.07.2022 **(date to be confirmed)**. Ukraine will start first with NCTS-P4 operations and will switch to NCTS-P5 before mid-2023.
- Impacted codelists:
 - CL009, CL008, CL015, CL070, CL144, CL063, CL071, CL085, CL141, CL142, CL143
 - Updated codelists will be added in test environment in advance





NEWSFLASH II

- Montenegro (ME) – one of the EU candidate countries - is expected to join the Convention on a common transit procedure on **01.12.2022 (date to be confirmed)**. Montenegro will start operations with their NTA aligned to NCTS-P5, managing both Phase 4 and Phase 5 operations.
- Impacted codelists:
 - CL009, CL008, CL015, CL070, CL144, CL063, CL071, CL065, CL141, CL142, CL143
 - Updated codelists will be added in test environment in advance





QUESTIONS RECEIVED

New XSD:

In the new XSD, I still cannot find the "Discharge" and "Volet Page Number" fields (CC007C). They are not in ctypes.xsd or any other xsd.

Only the European XSDs were made available through the website. The XSDs of our supplier with the national fields added to them we do not have at the moment.

Is the root of a message the message type e.g. CC007C. If so, why put the field "message type" as mandatory (in the pdf) under MESSAGE.

The messages are European defined.

The new xsd of each message e.g. CC007C.xsd refers to the message type. CC007C.xsd refers to elements with a name and type as attribute. The types have been changed. Will this be the case for each new version. e.g. element with attribute Name "TransitOperation" has type "TransitOperationType02" while it used to be "TransitOperationType15". If NCTS-RW (phase 4) is meant with "previously" then all these types will indeed change for phase

Again, this is European law from which we cannot deviate.

I still cannot find any fields in XSD with regard to countries where security does not apply. In EUCDM version 6.x these fields are mentioned.

Guarantee not valid in is only used in common domain messages or in the query on guarantee and that is where the EO can retrieve the data of his own GRN. Normally when a GRN is created there will be a guarantee certificate stating where this GRN is valid.



QUESTIONS RECEIVED

Code lists:

I found the following URL https://ec.europa.eu/taxation_customs/dds2/rd/rd_download_home.jsp?Lang=en on the EU website (can be found via lookup offices ncts). In this URL, you can find code lists (I assume the EU lists) for each module, e.g. NCTS P5, ICs2. I cannot find the lists for codes CL716 and CL215 of message CC060C on the EU website

- *CL 716 = 716 control type (this one is indeed not on the site and a ticket was created with DG Taxud)*
- *10: Documentary control*
- *20: Nuclear radioactive material check*
- *30: Non-intrusive inspection*
- *40: Physical controls*
- *41: Identification of consignment and seals*
- *42: Intrusive inspection*
- *43: Quantity control / Partial or total*
- *44: Nature and characteristics of the goods*
- *45: Sampling*
- *50: Other*
- *CL 215 = requested documents - this list is not yet available and we have created a ticket for this with DG taxud, this will probably be a combination of 214 (previous doc), 213 (supporting doc), 754 (transport doc)*



QUESTIONS RECEIVED

Can a similar website be provided for the Belgian code lists with a similar search? If so, what about code list NL0007 (location codes of certain facilities). Will Belgian customs continue in the future to use different codes in the various authorisations for certain fixed locations, e.g. one location code in the authorisation warehouse and another location code in the authorisation authorised consignor or consignee?

The intention is indeed to make these available nationally, but how to do this in practice is still being considered internally. NL007 = location codes that have been allocated to certain facilities; this is for the traders to know, this is a national list that we use in order to have old location codes still work when they have not yet been replaced by the new ones.

CL094 of Belgian Customs differs in content from the "RepresentativeStatusCode" of the EU. this does contain codes 2 and 3.

At the moment only code 2 is provided for NCTS P5 European, but legislation has already addressed this so perhaps this can still be adjusted.

NCTS departures that follow a re-export: do they have to be included in the Temporary Storage administration upon arrival at the terminal (yes or no)? If yes, with which message is the exit from TS registered? Is this with an ECS message?

Please clarify if you mean the export followed by transit scenarios?

Please give examples of an IE015 message

We do not have this yet, we will add it to the MIG.



QUESTIONS RECEIVED

If I have an NCTS followed by another declaration. For example, an NCTS arrives in a domestic temporary storage for which a TS declaration is made?

We are currently looking into this with the PNTS project team to see how the process can best be done.

Does rule BE0100 only apply during transition (code N785) and should one always refer to the MRN of the previous document after the transition?

N785 = Cargo manifest and is in plda, plda will be phased out and afterwards everything will refer to a previous doc in pnts or other application and just the mrn of that procedure will be entered.

With regard to locations, I went through the update of rule C0394. If I understand correctly, it will be possible to enter locations for box 30 that are either a customs office or a location code from an authorisation. Will this be the same for all other modules/domains (import, export etc.)?

Please note that there are also national rules that apply here, which are explained in IE015 explanation and IE007 explanation, So combinations possible in BE for NCTS are A with V and C with U

-----LOCATION OF GOODS	Using the relevant codes, enter the location where the goods may be examined. This location shall be precise enough to allow customs to carry out the physical examination. Only one Type of location is to be used at the same time.
Type of location	Enter the relevant code specified for type of location. CL347: A: Designated location B: Authorised place C: Approved place D: Other In Belgium only the type C is allowed in message IE015, in message IE170 and IE007 Type A is also allowed for declarations under normal procedure
Qualifier of identification	Enter the relevant code for the identification of the location. Based on the used qualifier only the relevant identifier shall be provided. CL326: T: Postal code U: UN/ LOCODE V: Customs office W: GPS-coordinates X: EORI-number Y: Authorisation number Z: Free text In Belgium when you choose: type C qualifier U must be selected (in messages IE170 and IE007 when type A is chosen in case of normal procedure then qualifier V must be selected)



QUESTIONS RECEIVED

Rule B1898. Is currency mandatory if security amount is stated? Is the collateral amount obligatory or does everything remain as it is now i.e. a fixed amount if the amount is not mentioned.

B1898 is a transition rule, which must be in place before and during the transition period, but this must be viewed together with B2101, which is what happens after the transition and then currency and amount are mandatory.

During and before transition it is how it is in the current ncts and then the fixed rate is used if there is no amount filled in. This amount can still be changed by the customs officer.

B1898 N/A

```
IF <Decisive Date> is LESS than or EQUAL to <TPendDate> AND !*/Guarantee/GuaranteeReference/amountToBeCovered is PRESENT THEN
!*/Guarantee/GuaranteeReference/currency = "R"
ELSE !*/Guarantee/GuaranteeReference/currency = "N"
```

52 B2101 N/A

```
THEN !*/TransitOperation/arrivalDateAndTime (actual) = "R";
IF <Decisive Date> is GREATER than <TPendDate>
THEN !*/TransitOperation/recoveryCommunicationDate = "R";
IF <Decisive Date> is GREATER than <TPendDate>
THEN !*/FunctionalError/errorReason = "R";
IF <Decisive Date> is GREATER than <TPendDate>
THEN !*/GuaranteeReference/Guarantor/Address/country = "R";
IF <Decisive Date> is GREATER than <TPendDate>
THEN !*/GuaranteeReference/Guarantor/identificationNumber = "R";
IF <Decisive Date> is GREATER than <TPendDate>
THEN !*/CustomsOfficeOfDeparture = "R";
IF <Decisive Date> is GREATER than <TPendDate>
THEN !*/Consignment/HouseConsignment/ConsignmentItem/Commodity/CommodityCode = "R";
IF <Decisive Date> is GREATER than <TPendDate>
THEN !*/Consignment/HouseConsignment/ConsignmentItem/Commodity/GoodsMeasure = "R";
IF <Decisive Date> is GREATER than <TPendDate>
THEN !*/Consignment/HouseConsignment/ConsignmentItem/Commodity/GoodsMeasure/grossMass =
"R";
IF <Decisive Date> is GREATER than <TPendDate>
THEN !*/Recovery/text = "R";
IF <Decisive Date> is GREATER than <TPendDate>
THEN !*/Guarantee/GuaranteeReference/amountToBeCovered = "R";
IF <Decisive Date> is GREATER than <TPendDate>
THEN /CD038C/Consignment/Incident/Endorsement/authority = "R";
IF <Decisive Date> is GREATER than <TPendDate>
THEN /CD038C/Consignment/Incident/Endorsement/place = "R";
IF <Decisive Date> is GREATER than <TPendDate>
THEN !*/Consignment/PlaceOfLoading = "R";
IF <Decisive Date> is GREATER than <TPendDate>
THEN !*/Consignment/ActiveBorderTransportMeans/customsOfficeAtBorderReferenceNumber = "R";
IF <Decisive Date> is GREATER than <TPendDate>
```



QUESTIONS RECEIVED

The Active Border Transport Means group is allowed to be included up to 9 times in IE013 while only once in IE015. Is there a reason for this? And what is the purpose of the element "Customs Office at border Reference number"? After all, rule B2101 does not exist.

In new version of DDNTA it also says 9x in IE015

In the rule B2101 it says that customs office at border reference number is mandatory after transition



Federal
Public Service
FINANCE

